

# QUEENSTOWN CONVENTION CENTRE

## Design Forum

20<sup>th</sup> August 2014



## GUEST SPEAKERS

**POPULOUS®**

**Chris Paterson and James Pearce**

The largest international architectural firm specialising solely in convention centres; stadia and sporting arena.



**Jan Tonkin**

NZ's largest professional convention management company and a member of the International Association of Professional Congress Organisers (IAPCO).



**Stephen Hamilton**

The world's largest consulting firm specialising in Hotel, Tourism & Leisure developments.

POPULOUS

fearonhay



# SPATIAL PLANNING

James Pearce - Populous

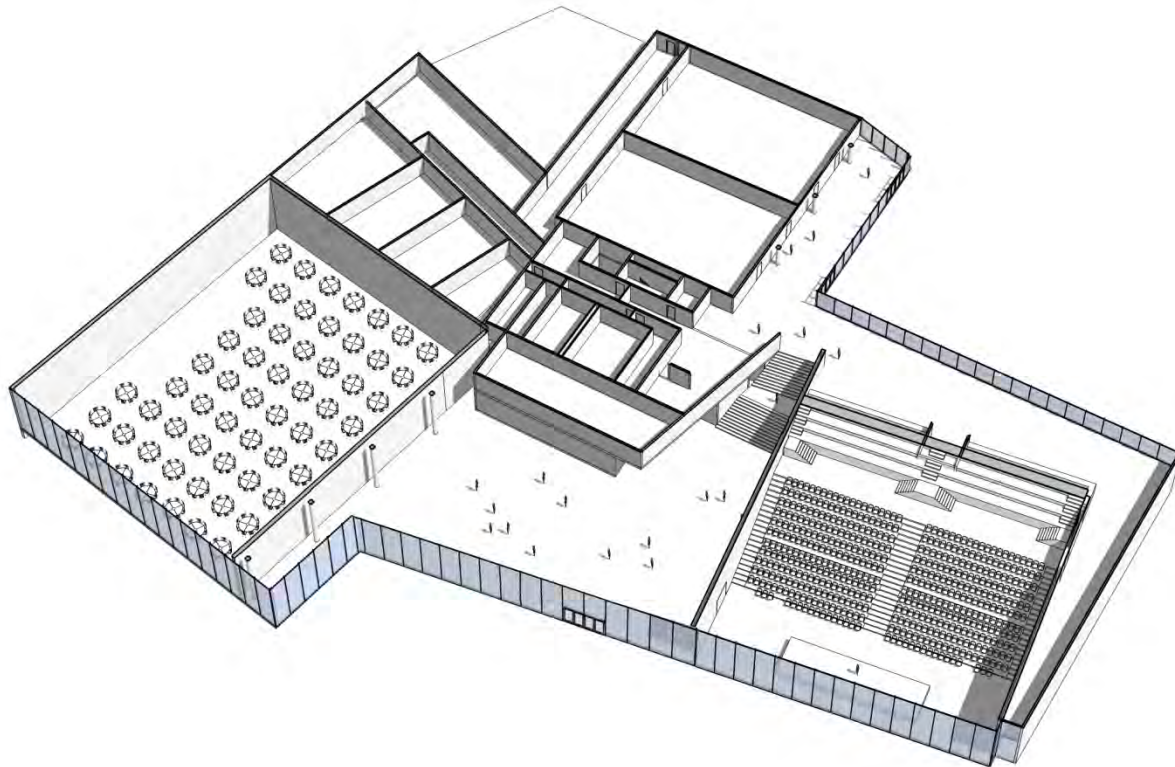


POPULOUS

fearonhay

# FIXED TIER PLENARY OPTION

Project cost: \$52,600,000



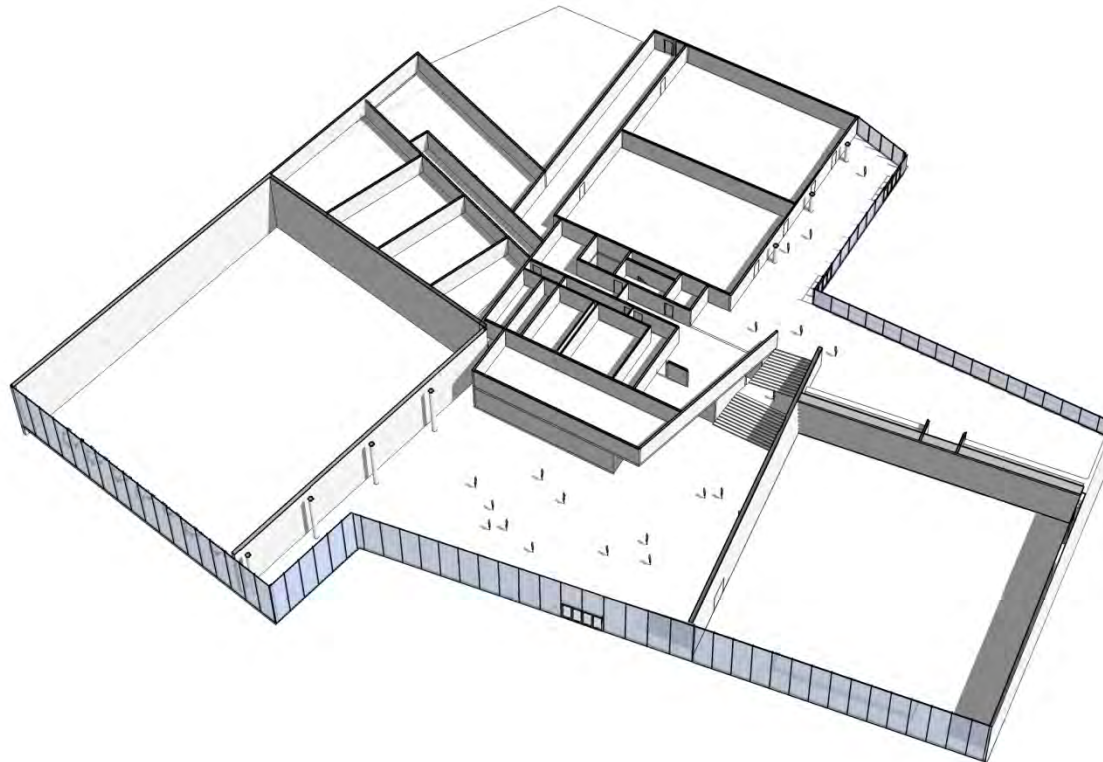
**POPULOUS**

fearonhay



# FLAT FLOOR PLENARY OPTION

Project cost: \$51,000,000

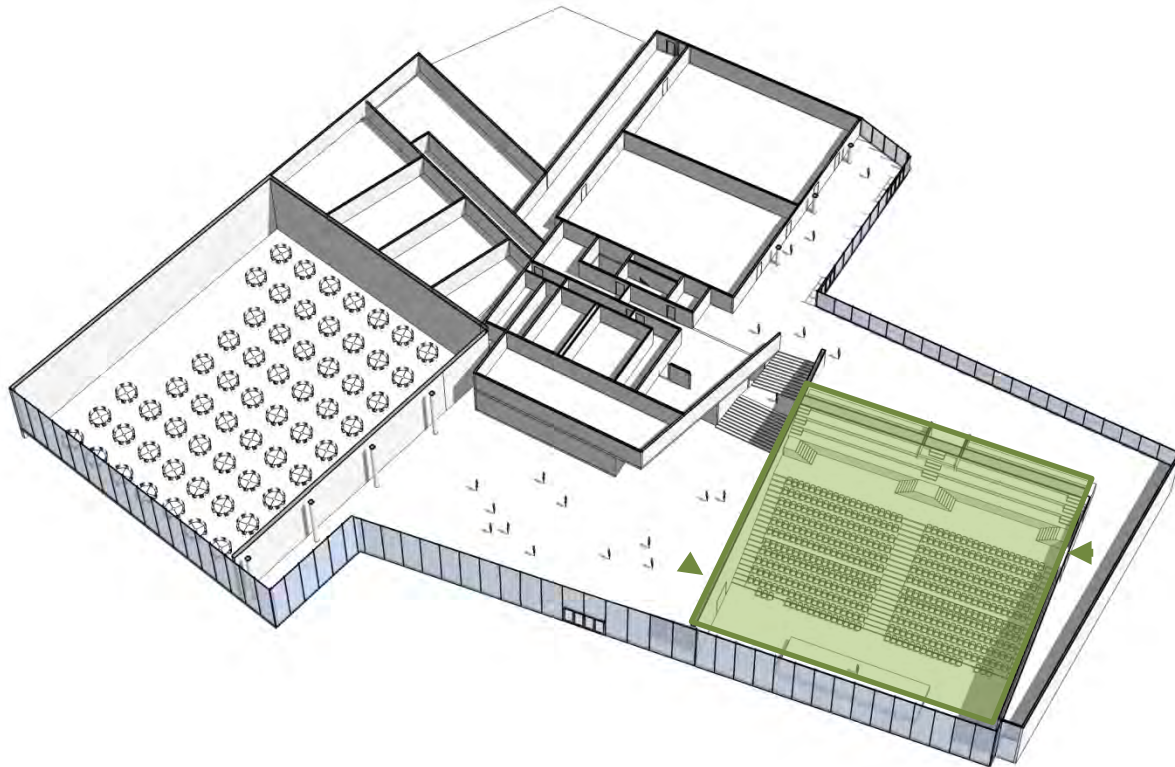


**POPULOUS**

fearonhay

# PLENARY SPACE

Fixed Tier Option - 750 seat capacity

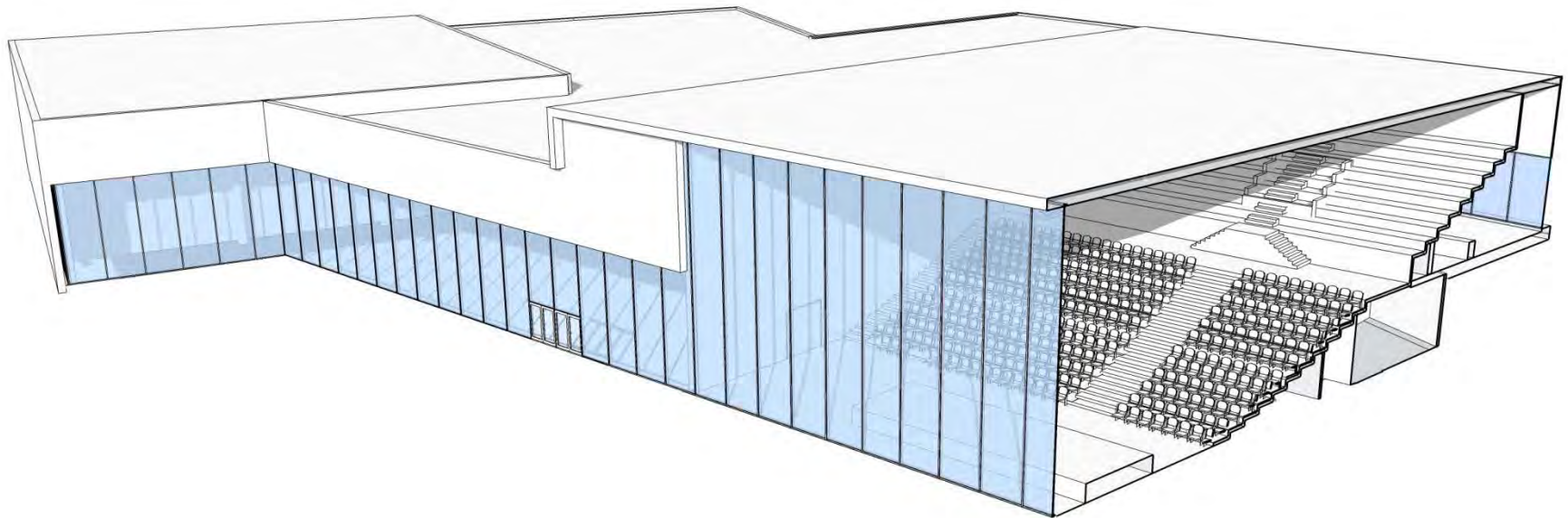


POPULOUS

fearonhay

# PLENARY SPACE

Section



POPULOUS

fearonhay

# ARTISTS IMPRESSION

Plenary Space - View to Queenstown



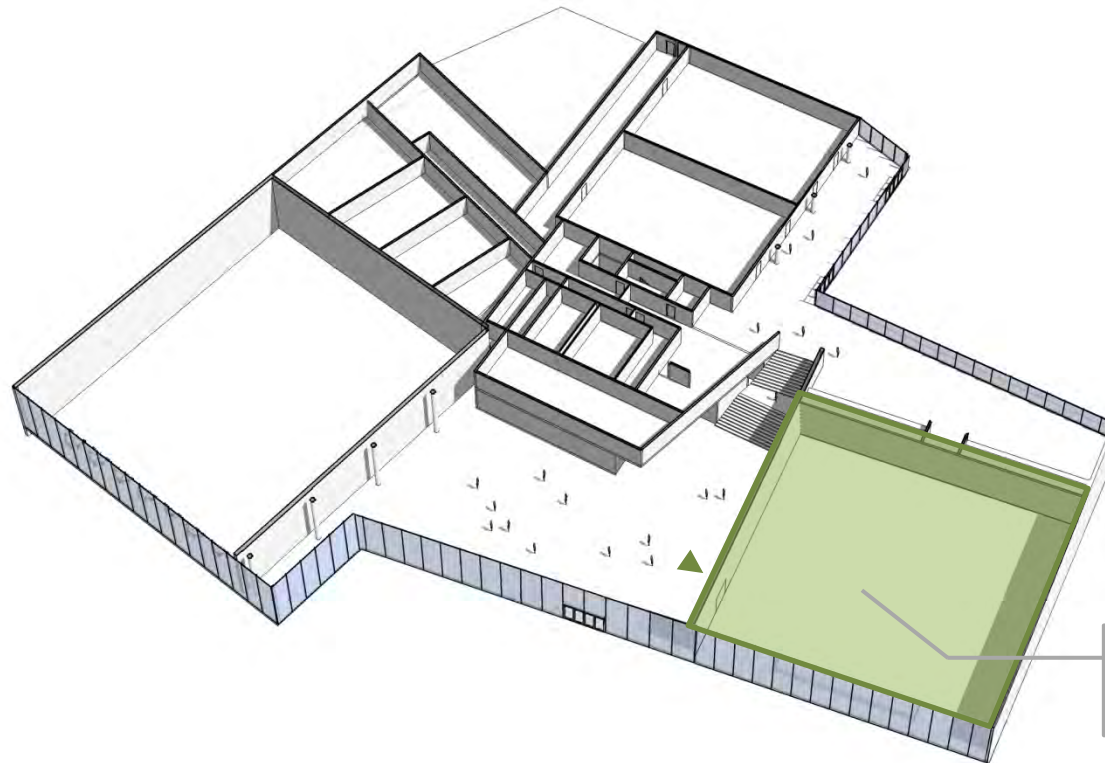
POPULOUS

fearonhay



# PLENARY SPACE

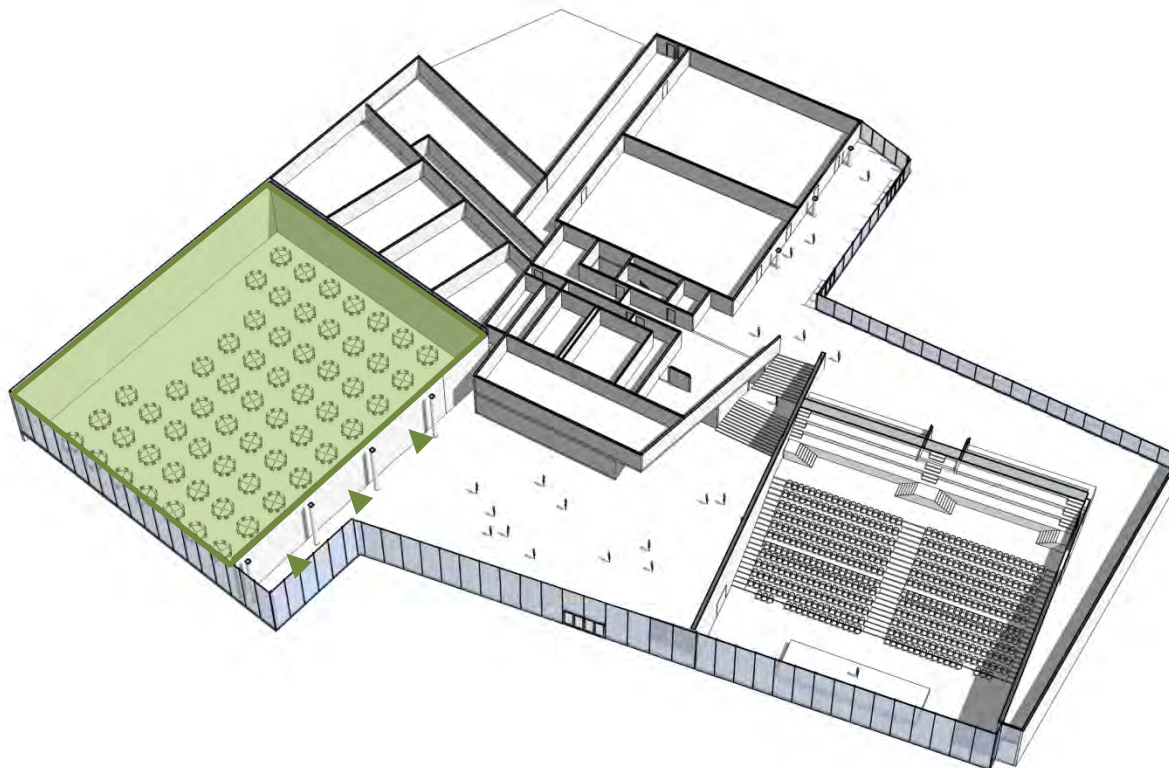
Flat Floor Option – 750 Seat Capacity



Flat Floor Area:  
895m<sup>2</sup>

# BANQUET / EXHIBITION SPACE

750 Dining capacity

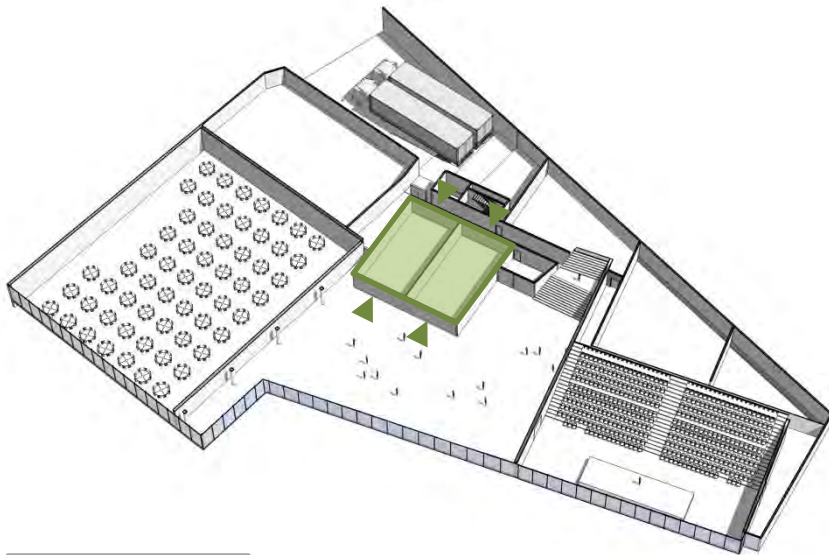


TOTAL: 1100m<sup>2</sup>

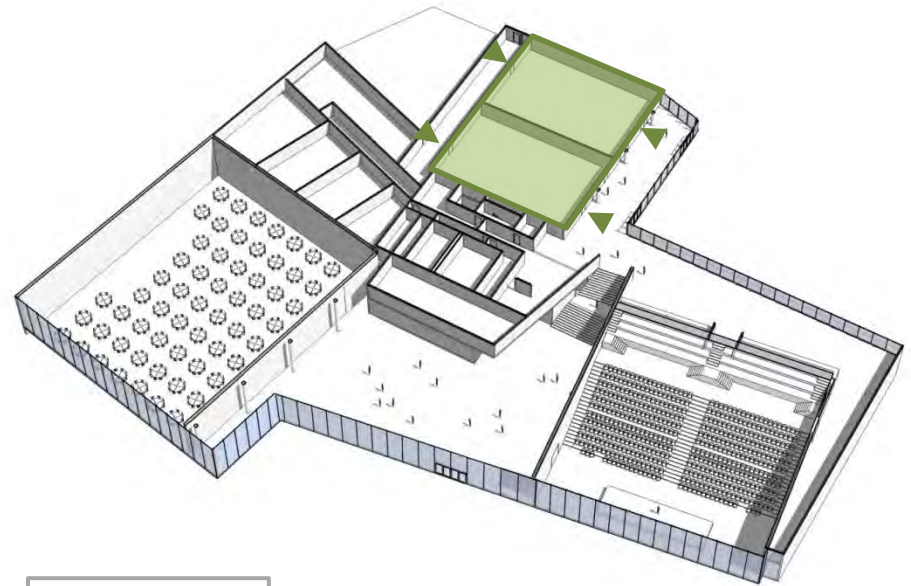
POPULOUS

fearonhay

# MEETING ROOM SPACE



Lower Level



Upper Level

Upper:	572m <sup>2</sup>
Lower:	232m <sup>2</sup>
TOTAL:	804m <sup>2</sup>

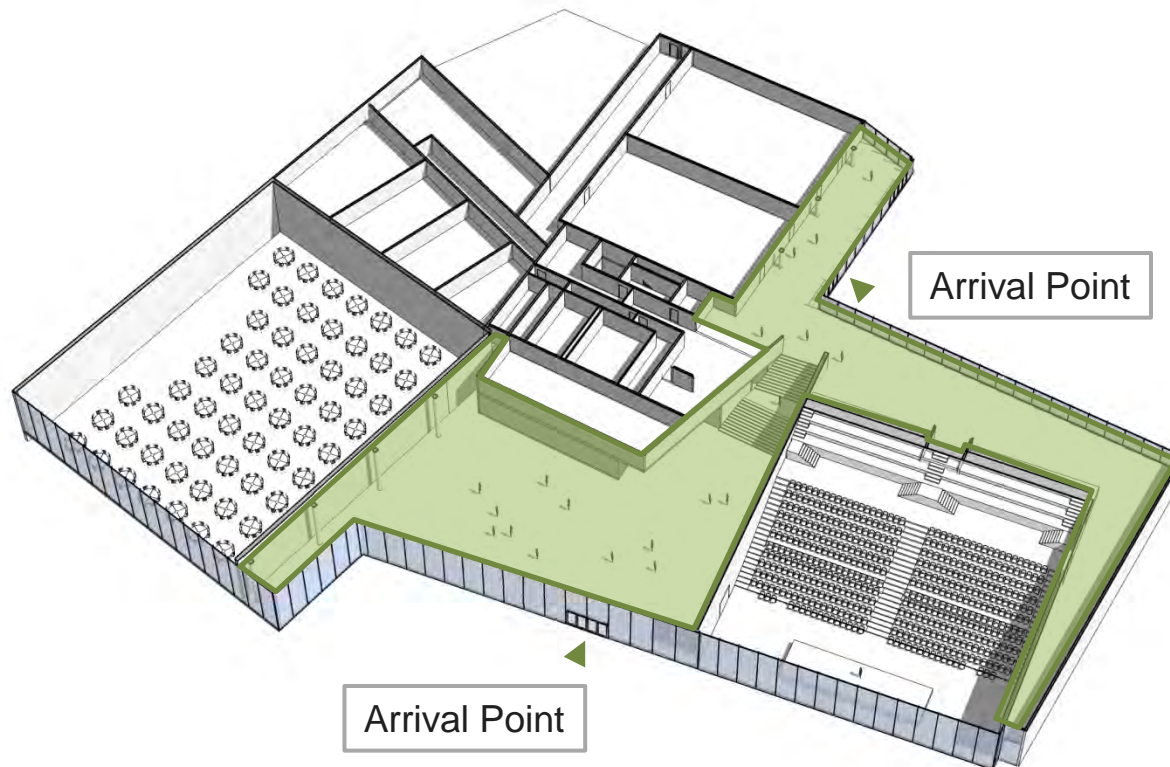
POPULOUS

fearonhay



# PRE-FUNCTION SPACE

Fixed Tier Plenary Option - Split Level



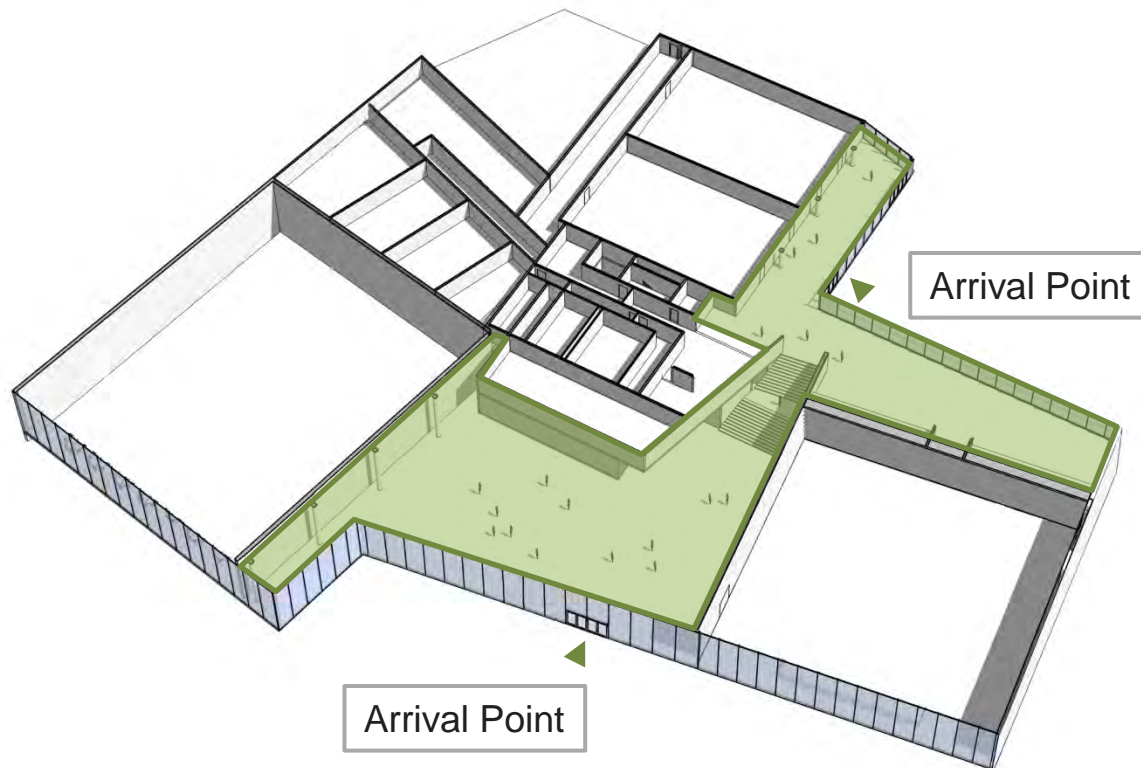
Upper:	710m <sup>2</sup>
Lower:	861m <sup>2</sup>
TOTAL:	1571m <sup>2</sup>

POPULOUS

fearonhay

# PRE-FUNCTION SPACE

Flat Floor Plenary Option - Split Level

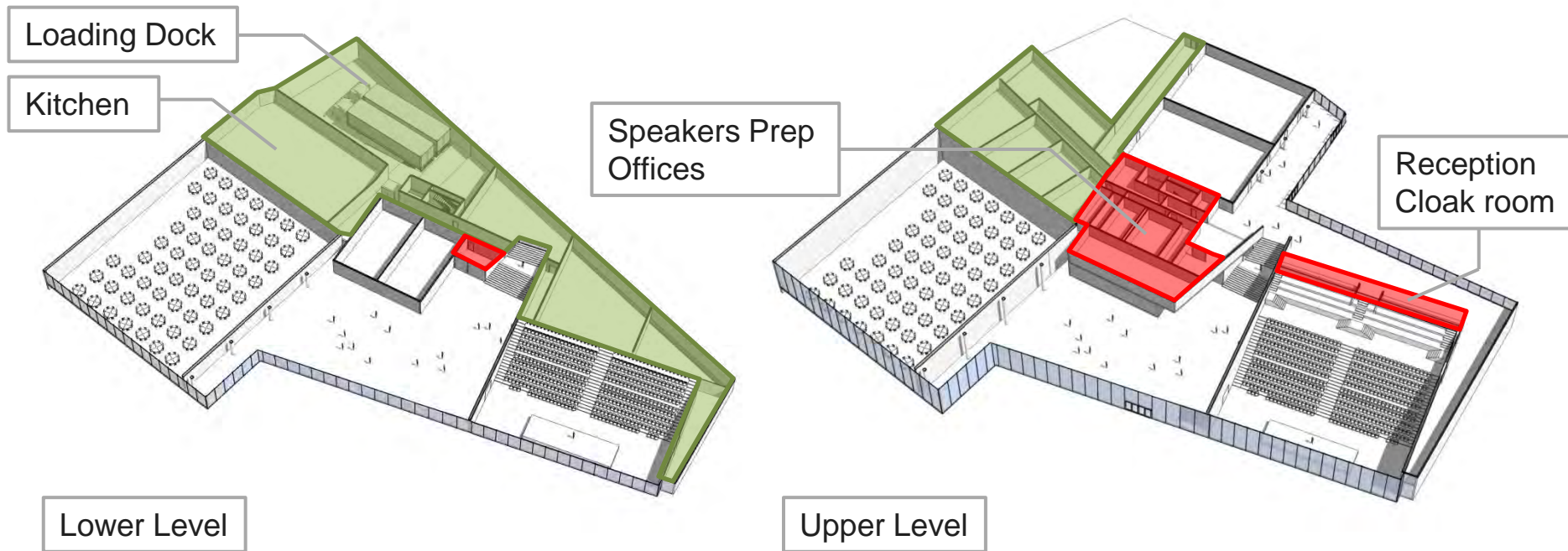


Upper:	437m <sup>2</sup>
Lower:	861m <sup>2</sup>
TOTAL:	1298m <sup>2</sup>

POPULOUS

fearonhay

# BACK OF HOUSE / FRONT OF HOUSE SPACES





# STAGING INVESTIGATION

James Pearce - Populous

POPULOUS

fearonhay

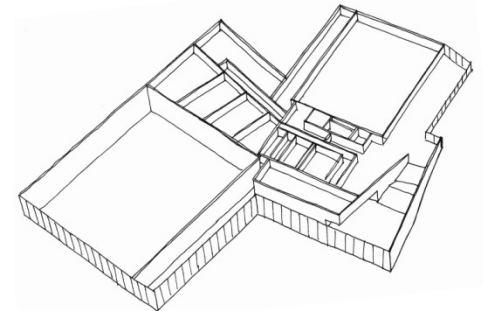
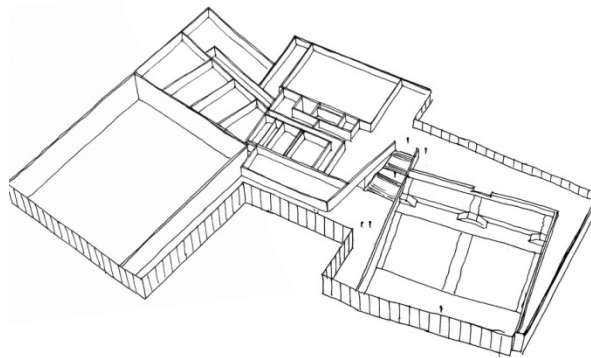
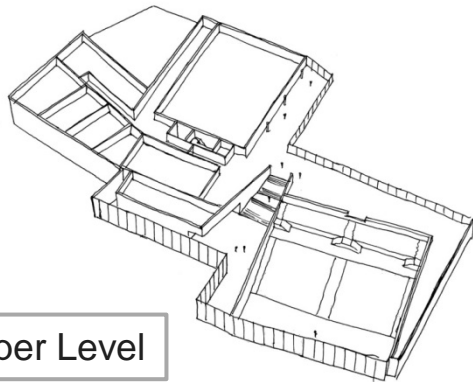
# STAGING OPTIONS

Ballroom Removed

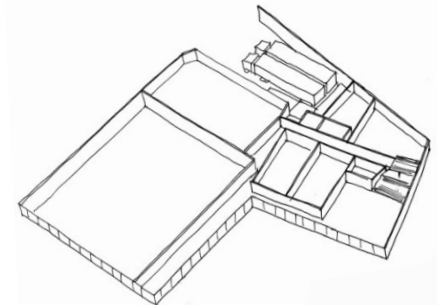
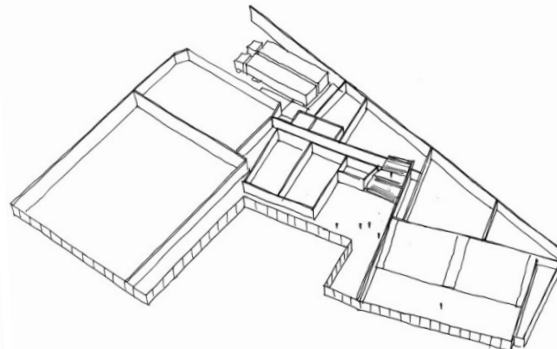
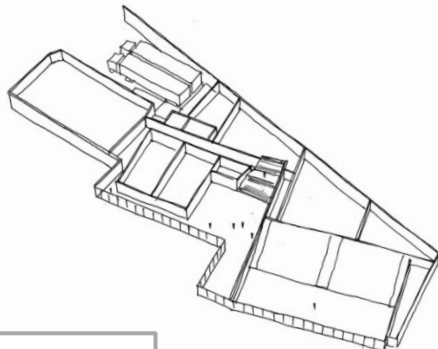
Meeting Rooms Reduced

Plenary Removed

Upper Level



Lower Level



**POPULOUS**

fearonhay





# OPTIONAL ADDITIONS

James Pearce - Populous

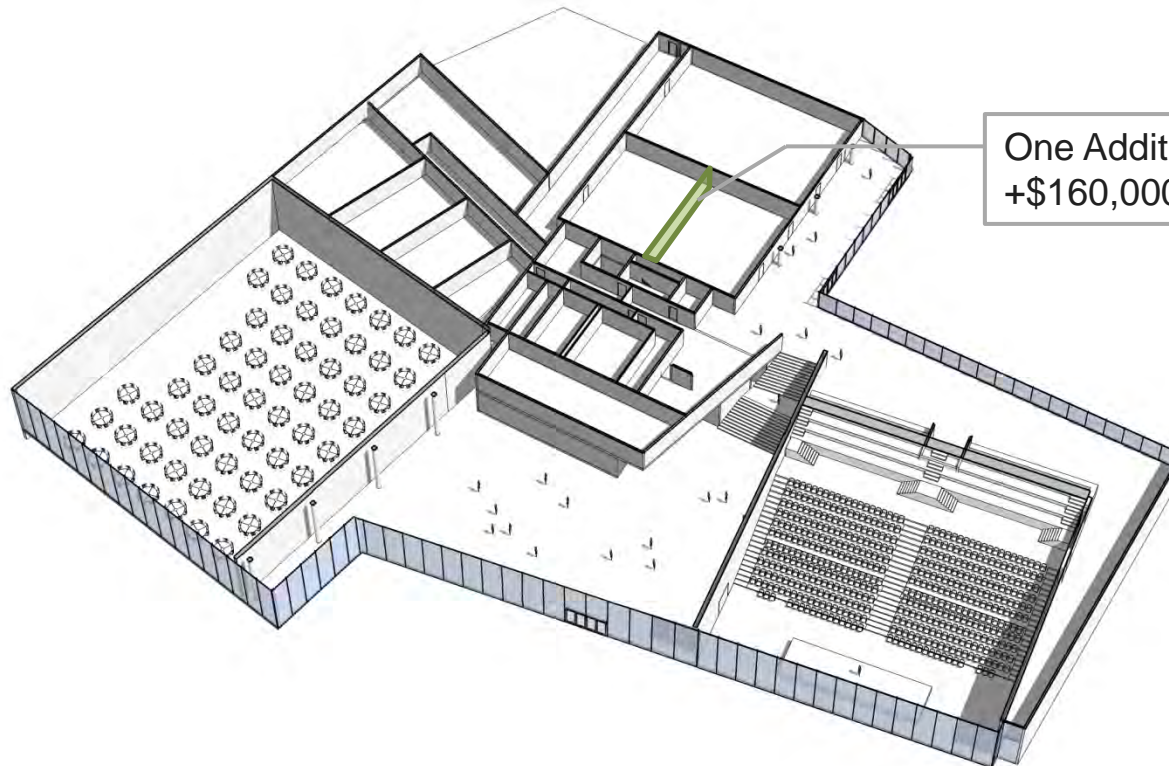
POPULOUS

fearonhay



# OPERABLE WALL

Upper Meeting Space



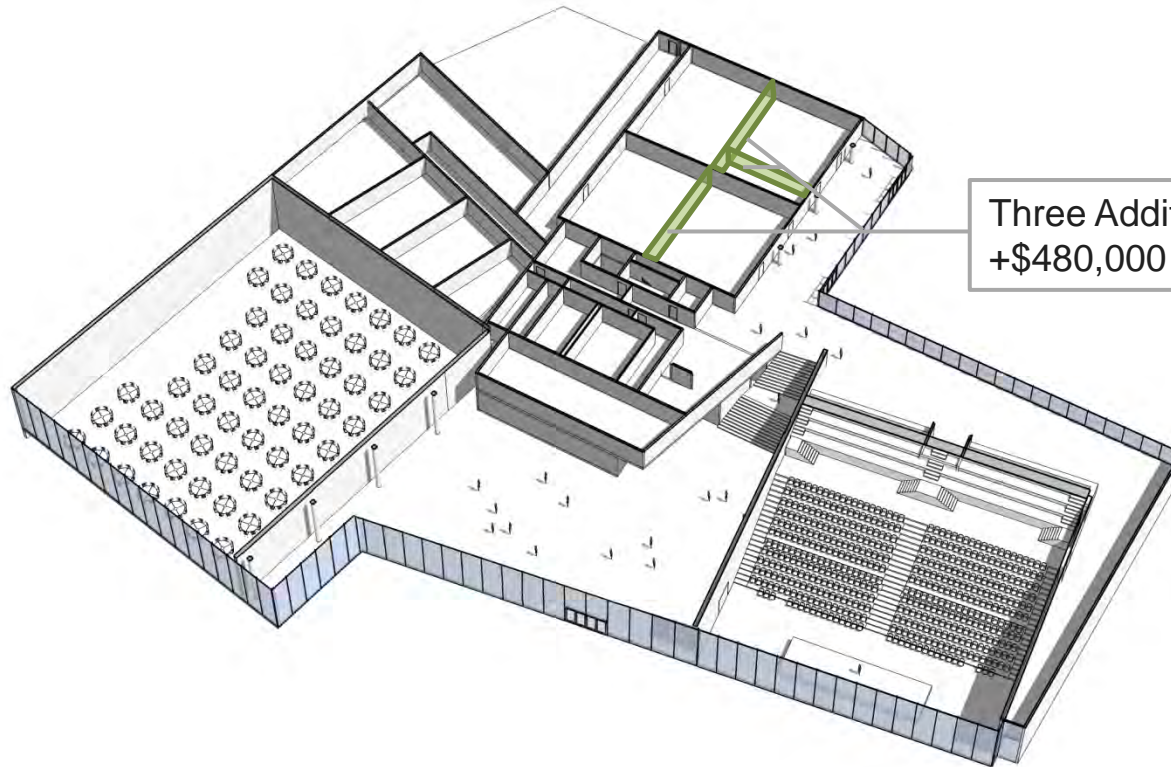
One Additional Operable Wall:  
+\$160,000

POPULOUS

fearonhay

# OPERABLE WALL

Upper Meeting Space



Three Additional Operable Walls:  
+\$480,000

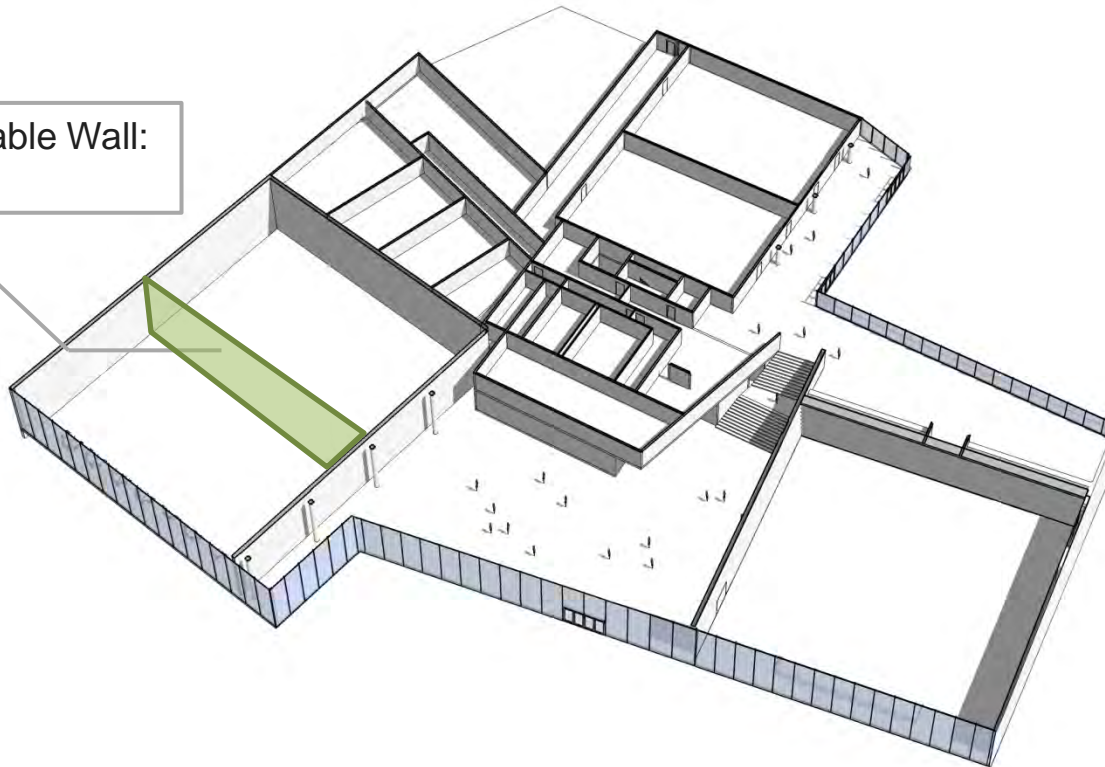
POPULOUS

fearonhay

# OPERABLE WALL

Banquet / Exhibition Space

Additional Operable Wall:  
+\$1,050,000



Dedicated BOH access:  
Kitchen Reduced  
+\$800,000

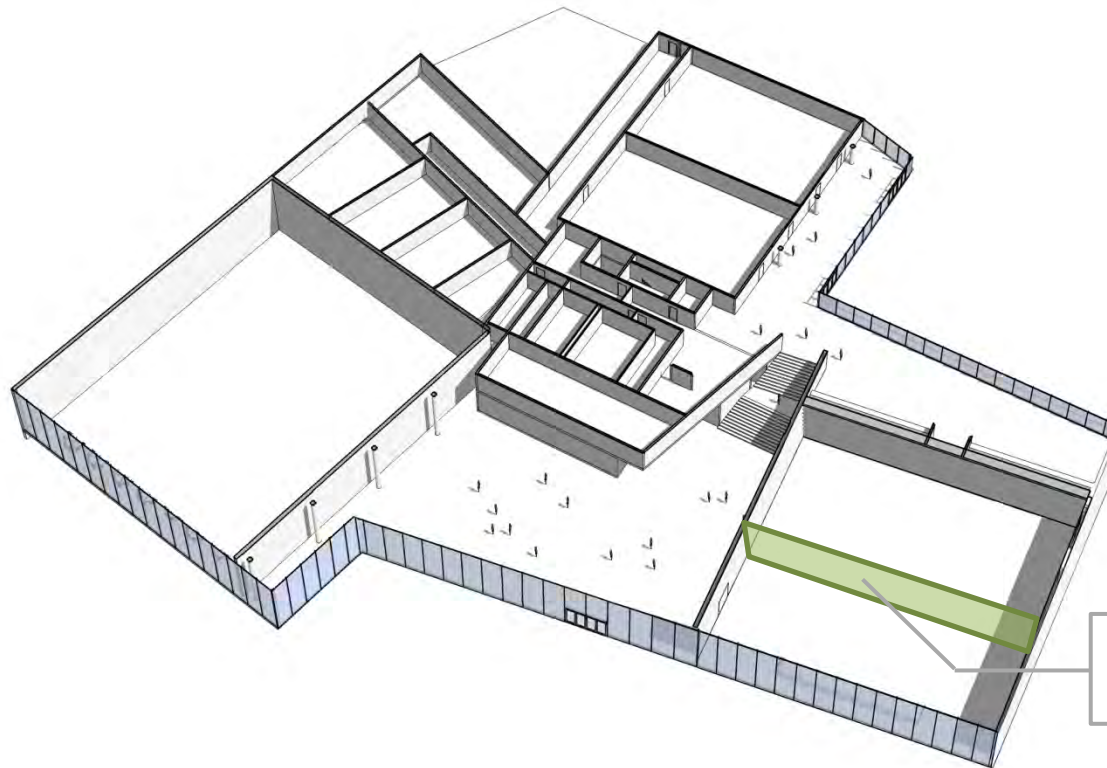
**POPULOUS**

fearonhay



# OPERABLE WALL

Banquet / Exhibition Space



Additional Operable Wall:  
+\$1,380,000

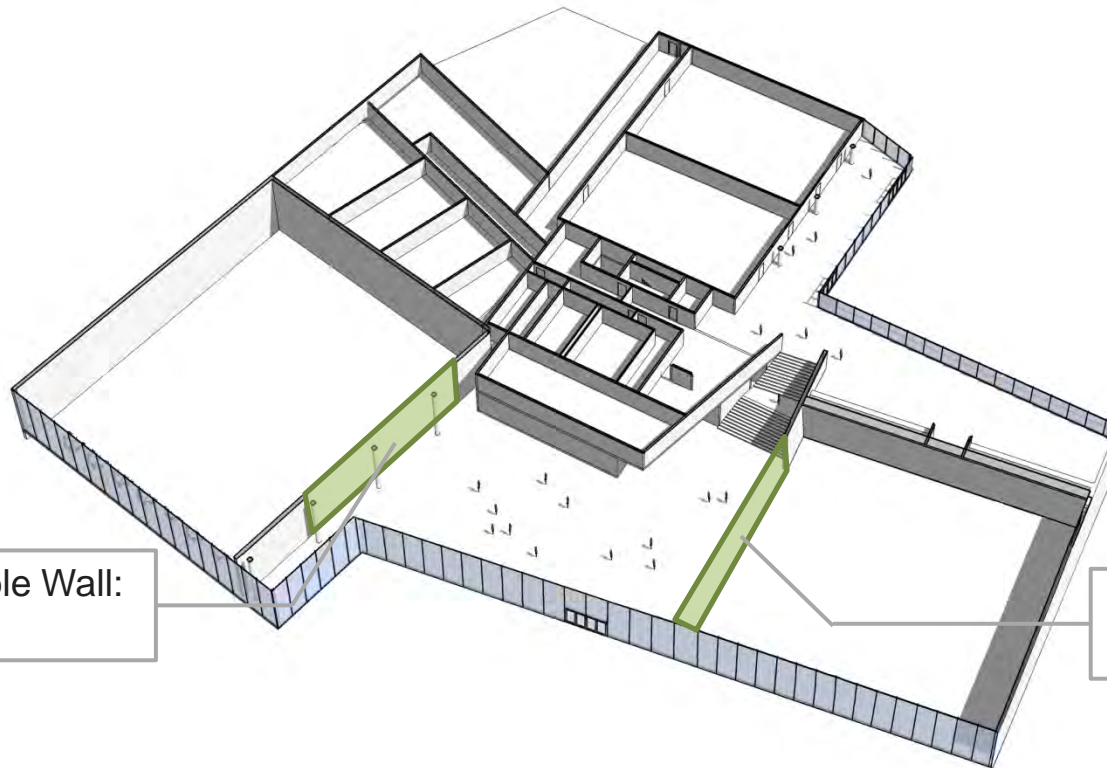
Dedicated BOH access:  
GFA increased  
+\$950,000

POPULOUS

fearonhay

# OPERABLE WALL

Banquet/Exhibition or Plenary to Pre-function Space



Additional Operable Wall:  
+\$550,000

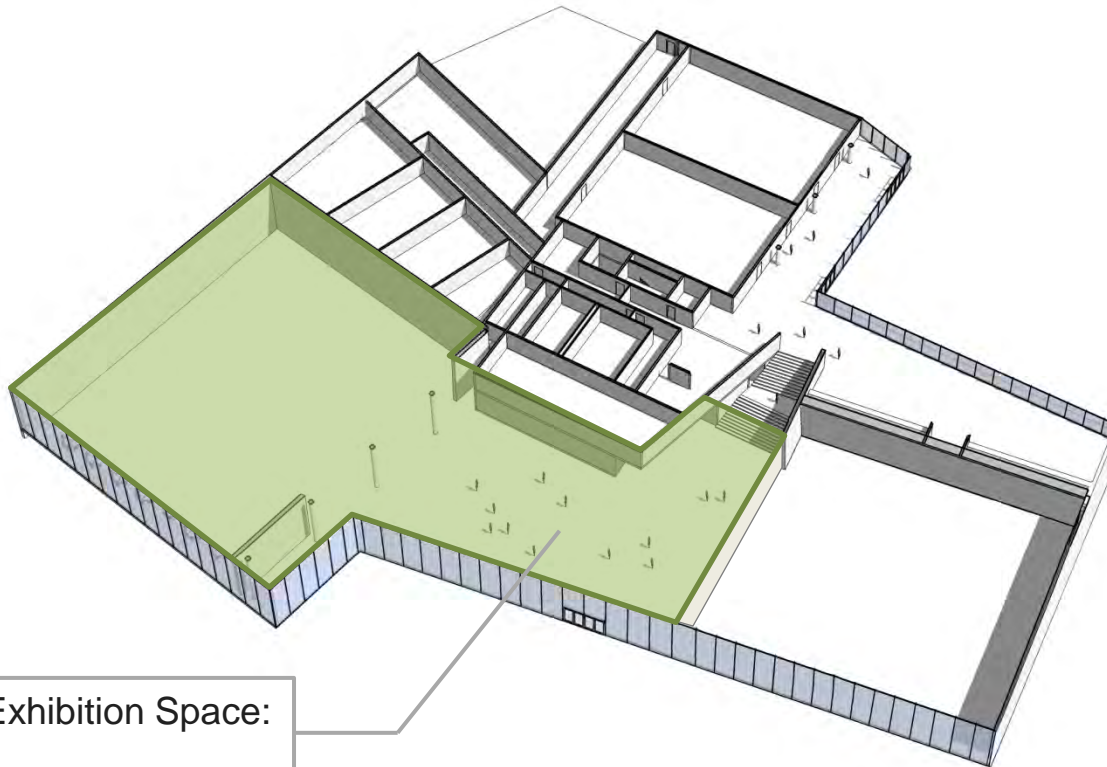
Additional Operable Wall:  
+\$550,000

POPULOUS

fearonhay

# OPERABLE WALL

Banquet/Exhibition and Plenary to Pre-function Space



Continuous Exhibition Space:  
1,961m<sup>2</sup>  
\$550,000

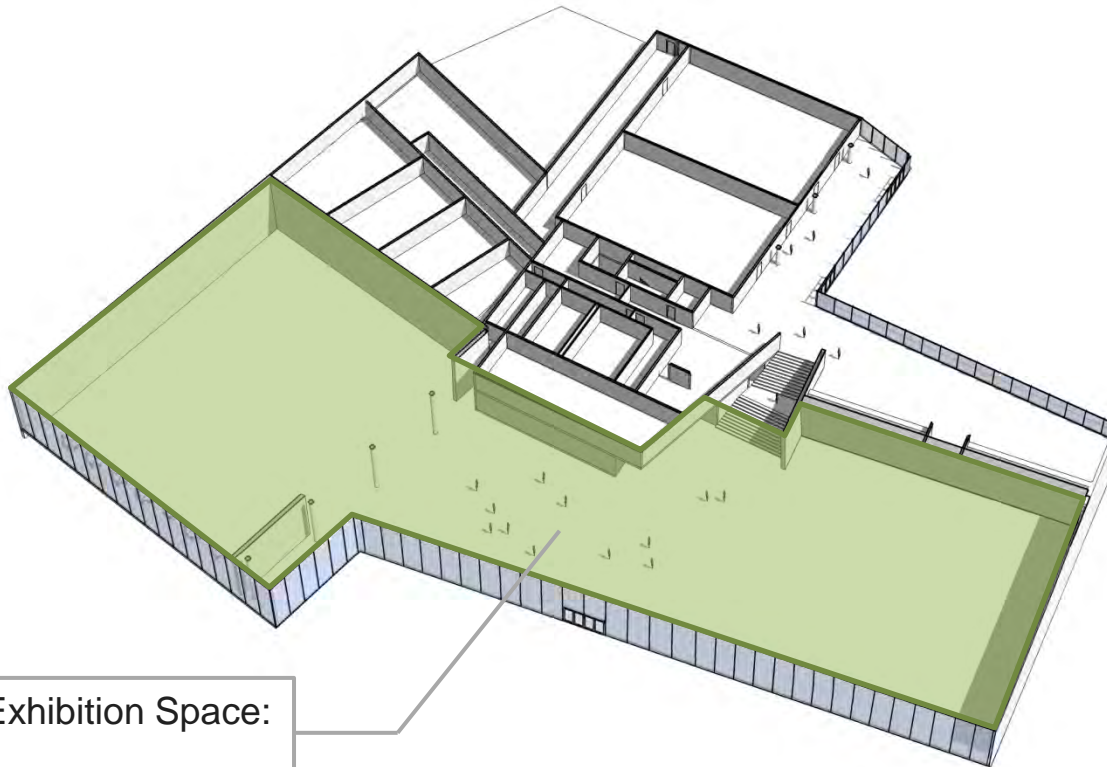
POPULOUS

fearonhay



# OPERABLE WALL

Banquet/Exhibition and Plenary to Pre-function Space



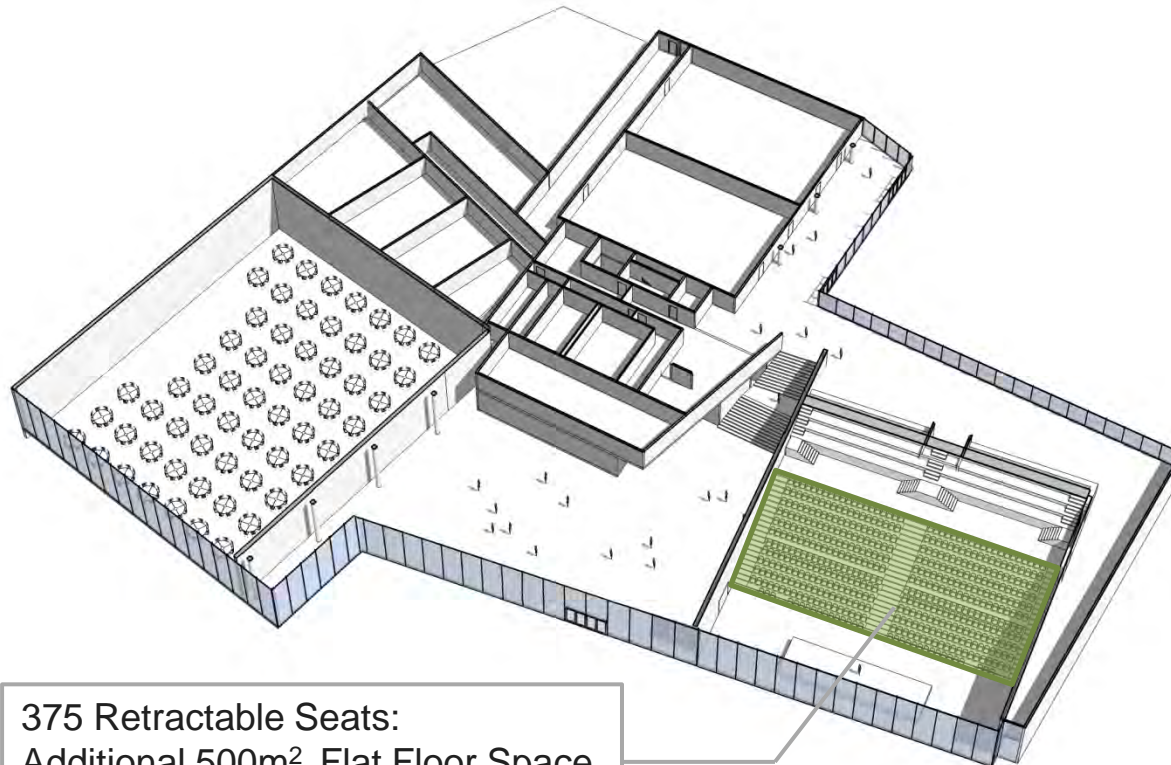
Continuous Exhibition Space:  
2,856m<sup>2</sup>  
\$1,100,000

POPULOUS

fearonhay

# RETRACTABLE SEATING

Tiered Plenary Space



375 Retractable Seats:  
Additional 500m<sup>2</sup> Flat Floor Space  
+\$1,179,000

POPULOUS

fearonhay

# ARTISTS IMPRESSION



POPULOUS

fearonhay