

# SOUTH BEACH (STAGE 2) WĀNAKA LAKEFRONT DEVELOPMENT PLAN

## Developed Design Report - Wānaka Community Board

28 March 2019





This is the Developed Design for the Second Stage of the Wānaka Lakefront Development Plan adopted in 2016 by the Wānaka Community Board. This stage includes providing a lakefront design, that incorporates the 4m wide shared path promenade (detailed separately), feature gardens, a day-lighted stormwater channel, a future toilet block location, promenade planting and park furniture.

The promenade provides the link to the town centre and improves pedestrian and cycle connections along the lakefront, opening up the grass areas of the reserve. The form of the pathway sweeps in a large arc opening up the reserve on the lake edge, with curving sections at either end to tie into existing pathways.

Porous compacted aggregate pathways will weave through the gardens providing access throughout.

## OVERALL DESIGN LAYOUT



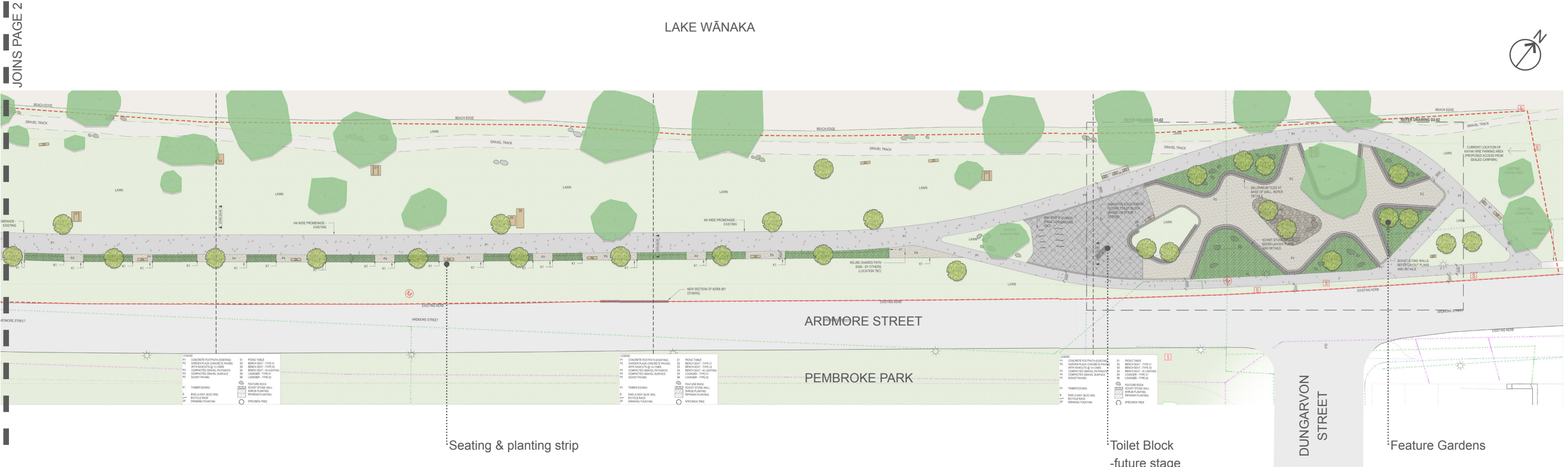
**Key Benefits:**  
**Removing cars from the lake edge to create a linear park.**

The upgrades will include a number of important changes and features for the various users of the reserve. These include:

- Create a safer, more appealing environment for people
- Create a more flexible, recreation focussed open green space
- Improve connectivity along the lakefront to the town centre, as well as access to the lakefront
- Have more opportunities for seating, picnicking & passive activities (activity zones)
- Implement a cleaner, more sustainable stormwater treatment system
- Create an environment that the community values
- Promote and celebrate Wānaka’s unique identity
- Remove the dominance of vehicles from the lakefront
- Feature gardens - strolling, seating, viewing, information etc.
- Carparking formalised (Ardmore Street parking to be deferred through the process of the Wānaka Town Centre Masterplan

- Lakefront Promenade & Lawn features:**
- 4m wide promenade / shared path from McDougall St to Dungarvon St and access to lake
  - Large open lawn areas for recreation
  - Irrigated lawn areas
  - Multiple seating and picnicking options
  - Retain as many existing specimen trees for shade as possible
  - New lake edge trees to match existing species (kōwhai & willow)
  - New tree planting species to be proven successful species that grow in local conditions
  - Existing earth bunds removed

- Feature Gardens:**
- Toilet block (future stage / services only part of this project)
  - Opportunity for local artworks and sculpture
  - Irrigation for a wider range of plant species and drought tolerant plantings
  - Feature flowering trees to be proven successful species that grow in local conditions
  - Raised local rock / stone walls for extensive seating opportunities
  - Raised and ground level garden, lawn and gravel spaces for interest
  - Variety of spaces created - both open and enclosed





## 02 DESIGN RATIONAL Materials & Finishes

### Surface Materials

- Using local natural materials to enhance the character of the lakefront
- Most of the surfacing of the lakefront is in lawn
- Paths in exposed aggregate concrete (to match stage 1)
- Loose compacted aggregate for pathways within gardens and along lake edge

### Rock Walls

- Use of local rock
- Flat on top and at seating height for plenty of seating opportunities

### Planting

- The tree and plant selection is based on extending the existing species along the lake edge and within the town centre. These are successfully established and proven in the local environment and are quick to establish
- Variety of species to provide interest
- A balance of perennial and shrub forms in the gardens
- Native planting within day-lighted drainae channel

### ARTISTS IMPRESSION - PROMENADE



### SURFACE FINISHES DIAGRAM



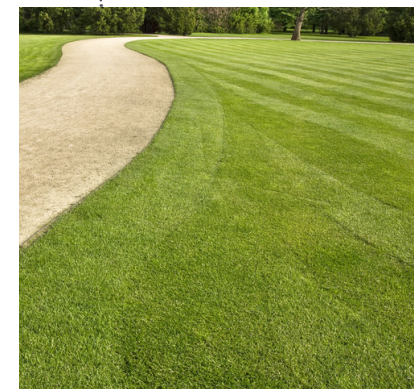
Drainage channel



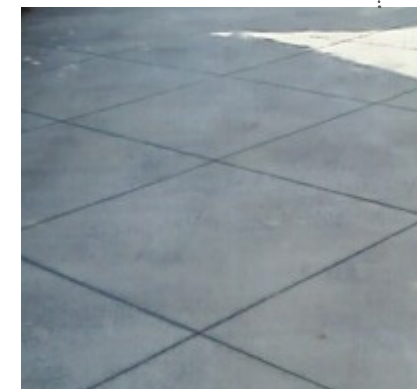
Feature garden walls



Pedestrian promenade



Open lawn areas



Decorative concrete sawcuts



Lakeside and feature garden paths



# 03 MILLENNIUM WALKWAY CONCEPT Within Northern feature garden

## Notes:

- Approximately:  
270 linear meters
- Millennium walkway concept to be incorporated into feature gardens at the base of the stone walls
- Allows people to slowly meander around the gardens reading the content
- Design reduces risk of user conflict between users 'actively travelling' along a promenade and those slowly meandering to read the walkway content
- Creates a sense of place to reflect and contemplate the snapshot of history that the Millennium project captures
- All existing content to be incorporated

## PROPOSED INCORPORATION OF THE MILLENNIUM WALKWAY CONCEPT WITHIN NORTHERN FEATURE GARDEN



## INDICATIVE LAYOUT PLAN

