

# Scuttlebutt

THE QUEENSTOWN LAKES DISTRICT COUNCIL NEWSLETTER // JUNE 2016 // ISSUE 115

## Wanaka's new Recreation Centre

The doors are about to open at Wanaka's new Recreation Centre, a first class facility that locals have been eagerly anticipating since it was first mooted back in 2005.

➤ Continued on page 10

### INSIDE

03

WE WANT YOU!

04

NEW TRAFFIC  
WEBCAMS

14

GLASS  
RECYCLING IN  
THE WAKATIPU

16

ARROWTOWN  
FIRE TRUCKS

# WANTED



**1 MAYOR**



**10 DISTRICT COUNCILLORS**

*Elected in three wards*

Arrowtown Ward 1  
Wakatipu Ward 6  
Wanaka Ward 3



**4 WANAKA COMMUNITY BOARD MEMBERS**

The Wanaka Ward Councillors are also appointed to the Wanaka Community Board

## REWARDS

### **DO GOOD FOR YOUR COMMUNITY (AND YES YOU DO GET PAID)**

Elected members are classified as self employed for taxation purposes. At the moment, the salaries for elected members in this district are:

Mayor	\$ 110,100
Deputy Mayor	\$ 44,240
Councillor	\$ 31,500
Portfolio Leader	\$ 39,500
Community Board Chair	\$ 22,200
Community Board Member	\$ 11,100

### **CAN I KEEP MY EXISTING JOB IF I'M ELECTED?**

Yes, though you will probably need a lot of flexibility and time away from work.

Representing your community effectively is a big commitment.

Aside from the meetings, the reports you'll need to read and the emails and phone calls, you can expect to be contacted regularly by constituents asking for your help on all sorts of matters. Your help makes a big difference to their lives.

You might find it helpful to ask someone who's already been a local body representative about the time it takes.



## WE WANT YOU!

It's that time in the three-yearly cycle again, and the 2016 Council elections are fast approaching.

Election Day is 8 October but first and foremost an election needs candidates and we are putting out the call to anyone who is a New Zealand citizen and 18 years or older to consider the rewards of being an elected member of the Council or Wanaka Community Board.

Elected representatives have the opportunity to make a real difference to the lives of people in our District.

If this sounds like you then it gets even better. Representing your community around the council and community board table will develop or enhance your skills in governance, leadership, planning and financial management.

In addition to being aged 18 years or older and a New Zealander, here's a summary of what you need to know about being nominated as a candidate:

- Nominations open on Friday 15 July and close at noon on Friday 12 August. They have to be submitted on the correct form which can be collected in hard copy from a Council office or downloaded from the website.
- Candidates must be nominated by two people who live in the area of the District where you are standing, but you don't need to live there yourself.
- Your nomination costs \$200, which in most cases is refunded after the election.

Have we got you thinking yet? Find out more on our website [www.qldc.govt.nz](http://www.qldc.govt.nz) or drop by our offices in Wanaka or Queenstown and pick up an information pack.

### CANDIDATES INFORMATION MEETINGS

We're holding two information sessions for people considering standing for election.

**Queenstown Memorial Centre**, Supper Room,  
Monday 11 July at 5.30pm

**Lake Wanaka Centre**, Armstrong Room,  
Thursday 14 July at 5.30pm

These will be informal sessions where you can talk to people who have been elected representatives in the past, hear from our electoral officer about the elections process, and pick up a candidates information pack.

If you have aspirations to be the next Mayor, Councillor or Wanaka Community Board member, this is a good place to start.

## WHO CAN VOTE IN A LOCAL BODY ELECTION?

Any New Zealand citizen or permanent resident aged 18 or over on Saturday 8 October 2016 can vote in this year's local body elections, as long as they have lived in New Zealand for one year or more continuously at some point.

If you are on the parliamentary roll, you will automatically be on the roll for your local body elections too.

If you own property in the Queenstown but live permanently somewhere else and are enrolled to vote there, you may also be eligible for a ratepayer vote in this district.

New enrolments for the ratepayer roll can be made at any time and the form is on the Elections page of our website, [www.qldc.govt.nz](http://www.qldc.govt.nz).

vivian+espie have extensive expertise in managing development and resource consenting processes in **Southland, Central Otago & Mackenzie**.  
Call us for advice and project management services.



**vivian+espie**  
resource management and landscape planning

(03) 441 4189  
[www.vivianespie.co.nz](http://www.vivianespie.co.nz)

# NEW TRAFFIC WEBCAMS TO HELP QUEENSTOWN DRIVERS

**With another ski season now underway there will once again be more cars on the roads as people come from all over to get a taste of the snow. To help people get from A to B as smoothly as possible, the team at the New Zealand Transport Agency have been working on a number of ways to reduce congestion and help people plan their journeys.**

With continuing development throughout the Queenstown Lakes region, the number of vehicles on our roads is increasing. Last year saw a ten percent rise in the number of vehicles using SH6 near the Queenstown Events Centre, and latest NZTA traffic counts saw around 20,000 vehicles using SH6A between Queenstown and Frankton every day.

Given the increasing pressure on the roads, NZTA's focus is to provide drivers with easily accessible information to help them make informed decisions about how and when they travel. Central to this is the installation of five webcams at key points on the Queenstown/Frankton highway network, giving drivers the ability to monitor traffic conditions online in real time.

Using this information, drivers can make travel arrangements to avoid congestion, either by delaying their departure, or taking an alternate route. In addition to this, drivers are encouraged to allow extra time for their trip, and if they can, to travel outside the morning and late afternoon traffic peaks.

These cameras are just one of the measures the Transport Agency is investing in to help ease congestion. These include planned improvements to the BP roundabout and the construction of the new two lane Kawarau Falls Bridge which started at the beginning of this year.

Web camera sites at Shotover/Stanley Street, Ballarat/Stanley Street and the Kawarau Falls Bridge will be online from the end of June. Other sites at the SH6/6A BP Roundabout and McBride Street pedestrian crossing lights on SH6 should be online toward the end of July and can be viewed at [www.nzta.govt.nz/traffic](http://www.nzta.govt.nz/traffic)



## QUEENSTOWN

- ① Shotover/Stanley Street
- ② Ballarat/Stanley Street

## FRANKTON

- ③ SH6/6A BP Roundabout - **Available from late July 2016**
- ④ McBride Street pedestrian crossing lights on SH6 - **Available from late July 2016**
- ⑤ Kawarau Falls Bridge





# REGISTER

# YOUR POOCH

It's that time of the year again – dog registrations are now due! Keep yourself and your trusty hound on the right side of the law (and avoid a penalty charge) by paying your registration fees on time.

If you haven't already paid, you can avoid the penalty by sorting this out now. Pay online using the QLDC website, in person, by direct credit or by cheque. Have your animal ID and invoice handy so your

payment is matched to your pet – you should have received this in the mail at the start of June.

Even better news is that responsible dog owners qualify for substantially reduced fees. If your property is well fenced and your dog is neutered with no record of bad behaviour you will be eligible for discounts on your registration fees.



Category	Standard Fee (incl. GST)	Effective Fencing Reduction	Positive History Reduction	Potential Discounted Fee
Guide/ Companion Dog	Nil	-	-	-
Working Dog	\$70	\$20	\$20	\$30
De-sexed Dog	\$115	\$30	\$30	\$55
Dangerous/ Menacing Dog	\$245	\$40	\$40	\$165
All Other Dogs	\$155	\$40	\$40	\$75

Please remember to let us know if you've changed your address or your phone number. That way if your dog is picked up wandering, our animal control team can get in touch with you and maybe even drop your pet home instead of taking it to the pound.

## TRAIL BLAZERS

It used to be that "Shanks' pony" was the only type of horse allowed on trails managed by the Upper Clutha Tracks Trust, but that's changed with the opening of the Hawea Flat School Track.

Local riders from the Wanaka – Hawea Pony Club are among those enjoying the new track, which is the first in the district to be opened up to horses as well as cyclists and walkers.

Other trails may become shared by riders on horseback in the future.



Image:  
Cris Johnston,  
CO News

## TIME FOR A CHANGE?



**We'll take the stress out of managing your property - no meditation necessary.**

### WE OFFER:

- NZ Small Property Management Business & Property Manager of the Year 2015
- Warm dry homes available for our clients to rent
- Free local market advice & rent appraisal
- No stress, friendly smiles & great communication
- Pre-qualified clients looking for homes in the area

If you require a rental appraisal, have property to lease, or looking to move, pop in and see the Housemart Team. We will be able to help you.

VISIT US AT:  
L1 Aurum House, Terrace Junction, Frankton  
OR PHONE: 03 442 3815 [www.housemart.co.nz](http://www.housemart.co.nz)

**HOUSE MART**  
HOW SMART

# HAVE A THINK BEFORE IT GOES DOWN THE SINK

A slurry of fat and grease in the Frankton Beach pump station. This had to be removed by a specialised pump truck.



**When our wastewater systems get blocked up it can make a real mess. Almost all of these incidents could be easily avoided, and it's frequently a case of "the usual suspects" when the cause of the blockage has been established.**

More often than not our pipes get clogged by a combination of so called 'disposable' wipes, congealed cooking fat and other material. It all combines to create a plug in the wastewater system that causes an overflow and needs to be cleared by our contractors, Veolia and costs around \$170,000 each year to fix and clean up.

This is an ongoing problem, but here's how you can help.

*Yuk! Wet wipes, rags and fat that had clogged the impeller at the Lakeside Avenue pump station. To clear this, the pump had to be lifted out, cleared and set back in place.*

Please put wet wipes and other non-paper fabrics in your rubbish bin rather than flushing them down the loo. Toilet paper is designed to break down easily so it doesn't cause blockages, but anything else can easily become snagged in the system.

To dispose of cooking fat, instead of pouring it down your kitchen sink, leave it to cool and then place it in the rubbish inside a sealable plastic container such as a snap-lock bag. Fat may seem harmless when you pour it down

the sink while it's hot and runny, but once it cools down it becomes solid and becomes the "glue" that binds other material together to clog up the network.

Tradespeople are also asked to take care to keep construction debris out of the drains. Hard to believe, but wooden palings, gravel and other materials often turn out to be at the centre of blocked pipes.

If you come across a blocked drain, a leak or a fault in the wastewater system please report it as soon as you can – either by calling 03 441 0499 (Queenstown) or 03 443 0024 (Wanaka) or through our website [www.qldc.govt.nz](http://www.qldc.govt.nz) under "service request" on the homepage.

## COMMON BLOCKAGE CAUSES:

- » Disposable wipes
- » Nappies
- » Rags
- » Congealed fat and grease
- » Broken asphalt

## NOT SO COMMON CAUSES:

- » Cell phones
- » Cutlery
- » Bedsheets
- » Underwear
- » Cinderblocks

## RATES AND SCUTTLEBUTT BY EMAIL

You can receive your rates account and also Scuttlebutt by email.

Help us reduce the number of copies we print by switching to our

email distribution lists. Just email [services@qldc.govt.nz](mailto:services@qldc.govt.nz) with the word "newsletter" in the subject line for Scuttlebutt and "rates" to go on the rates mailing list.

Be sure to include your name, property address and postal address if different.



# YOU SPOKE— WE LISTENED

**Public submissions on proposed services and projects put forward in its draft Annual Plan influenced the Council to consider several changes to what was originally proposed.**

By the time you read this, the Council will have either just adopted the Annual Plan or be about to do so – the meeting is on 30 June.

One of the significant changes that's up for consideration is to bring forward funding for improvements to the turf and drainage at the Queenstown Events Centre, so that the Oval is upgraded in the next 12 months rather than in 2017-18.

Driving the need for this upgrade is the opportunity to greatly enhance community sports use, which is limited by the surface conditions and drainage. A secondary benefit will see the oval meet new standards for national and international fixtures.

After considering submissions, the Council has also moved away from the idea of contributing to move power lines along the Ladies Mile underground, to save a line of privately owned trees on the roadside. Instead, the Council will consider allocating \$10,000 as a one-off expense to prune the trees.

Depending on the decisions made on 30 June, the average rates increase is likely to be 2.99%, which is lower than the increase projected last year in the 10 Year Plan.



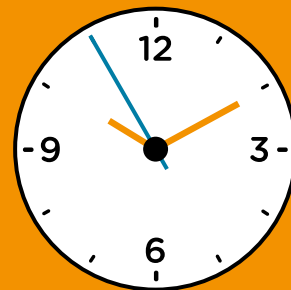
## KEEPING ACTIVE DURING PREGNANCY

Keeping active during pregnancy is important, for you and for your unborn child; it helps to relieve stress, reduce anxiety and release endorphins. But the key is knowing how to exercise safely. That's where we can help.

You & Me is our exclusive fitness programme especially designed for expectant mothers. Set in a fun, relaxed and supportive group environment, it's a great opportunity to exercise while socialising with other mums or mums-to-be.

You & Me runs as a 4-week block, with up to three classes per week available. All sessions last 40 minutes. Aqua sessions are held in the lap pool at Alpine Aqualand. Gym sessions are held in the Group Fitness Studio.

For full details or to book into the next block, visit [sportrec.qldc.govt.nz](http://sportrec.qldc.govt.nz) or contact Elena Del Pra on [elena.dalpra@qldc.govt.nz](mailto:elena.dalpra@qldc.govt.nz) or 03 450 9124



## GET MORE LIBRARY ON A SATURDAY

**Hawea Library is trialling longer opening hours on a Saturday. So from now until 20 August, you can visit the Hawea Library between 10am and 2pm.**

If you're a Hawea Library user and you love the idea of longer hours, make sure you support the trial so it will become a permanent fixture.

**libraries**  
Queenstown Lakes

# NEW ARROWTOWN DESIGN GUIDELINES

Ever wondered how Arrowtown retains its unique character? Well it's partly down to design guidelines that are considered by council staff when new buildings and developments are proposed. The current document is over 10 years old and doesn't include guidelines for medium density developments,

which may be allowed under the Proposed District Plan (stage 1).

In June we did a bit of informal consultation on some updated Arrowtown Design Guidelines. The idea was to get some early feedback before the Council formally notifies its intention to incorporate them into the Proposed

District Plan (stage 1) as a variation. This is an important step, as it will give more weight to the design guidelines when consent applications are being considered.

Keep an eye out for more information about this – there will be a full public consultation process later in the year.



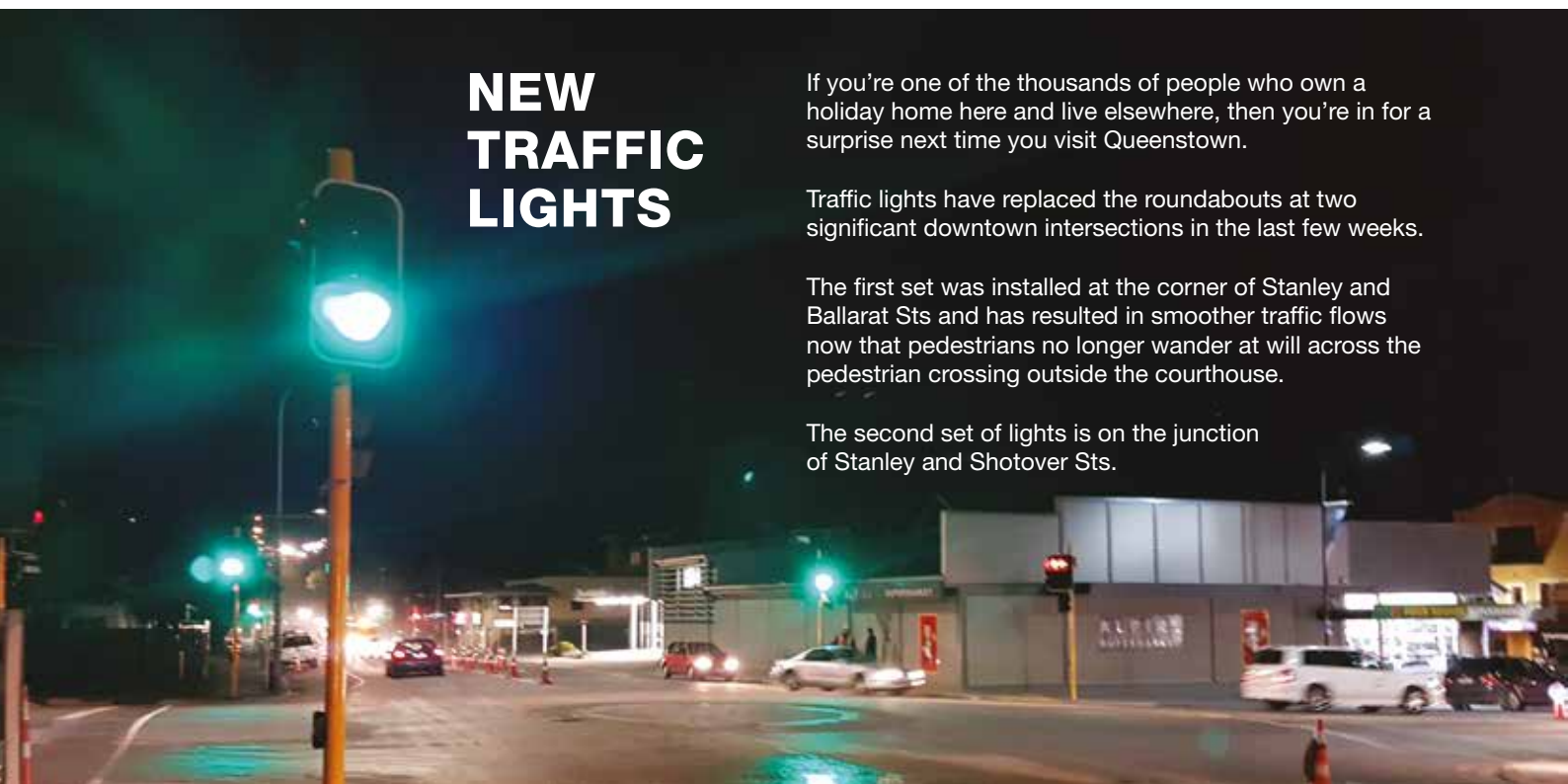
## NEW TRAFFIC LIGHTS

If you're one of the thousands of people who own a holiday home here and live elsewhere, then you're in for a surprise next time you visit Queenstown.

Traffic lights have replaced the roundabouts at two significant downtown intersections in the last few weeks.

The first set was installed at the corner of Stanley and Ballarat Sts and has resulted in smoother traffic flows now that pedestrians no longer wander at will across the pedestrian crossing outside the courthouse.

The second set of lights is on the junction of Stanley and Shotover Sts.



## WINTER DRIVING

Snow and ice are all part of living in an alpine environment, so QLDC and our contractors work hard to make sure that our roads are kept clear and safe to drive on throughout the winter.

It's not all about the Crown Range, or even the ski fields. Everyone who lives here between

May and September can expect to encounter slippery roads on a weekly basis and snow too.

When it snows or there's widespread ice, we work closely with NZTA to keep the main roads open. Our contractors, Downer, are out with snowploughs and grit trucks from the small hours. We have developed a ranking system that gives priority to the main roads, the route to the ski fields, and the busiest residential streets.

You'll get a good idea of road conditions in your neighbourhood by looking out your window or opening your door in the morning, but how do you know what it's like when your destination is more than a few km away?

That's where QLDC can help.

We provide reports and alerts on road conditions every morning throughout the winter, giving the state of the roads around 6am

daily. You can sign up to get these by email or text alert. Just go to our website, [www.qldc.govt.nz](http://www.qldc.govt.nz) and click on the winter driving link on the home page.

We also précis the daily reports on our Facebook page, on Twitter and on our website. Local radio stations More FM, Radio Wanaka and The Hits update listeners on road conditions based on our information as well.



# Pre-election report

**Wondering what your Council's been doing over the last three years, and what's ahead?**

We've just produced a special Pre-Election Report, designed to give you an overview of major projects and the big issues facing our communities, and to encourage discussion on how these challenges could be tackled.

By law, the Pre-Election Report has to be a neutral assessment produced every three years in the lead-up to local body elections. It's designed to provide a "no surprises" overview of each council so that intending candidates and voters can understand its finances and work in progress.

You'll find ours on our website at [www.qldc.govt.nz](http://www.qldc.govt.nz) and in our offices and libraries.



## Fuel up in Arrowtown

**Enjoy 7 day access to fuel at Arrowtown's new self-service pump**

RD Petroleum's self-service station is open to the public seven days a week until late.



25 Wiltshire Street, Arrowtown | 0800 44 00 14 | [www.rdp.co.nz](http://www.rdp.co.nz)

➤ Continued  
from page 1

The official opening is on 7 July, timed to allow local school students to be part of the celebrations before the end of term, then the centre will be thrown open to the whole community for three days to visit and sample for free.

The WRC will swiftly become a hub for community sports, events and programmes, with indoor courts and meeting areas first to open, followed within weeks by an artificial turf for hockey, netball and tennis.

Wanaka's new lap pool and learners pool will be opening right alongside with a shared entrance and administration area. And sports fields will be added to the mix over time to meet demand.

## Come and see

The Wanaka Recreation Centre will be open for all to visit from Friday 8 to Sunday 10 July.

Drop in and see local sports clubs in action and have a go yourself.

## Opening hours

Monday to Friday: **10:00AM - 9:00PM**

Saturday and Sunday: **8:00AM - 8:00PM**

Public Holidays: **10:00AM - 8:00PM**

## Thanks!

The Wanaka Recreation Centre has received generous support from the Central Lakes Trust, which gave a grant of \$1 million, and the Otago Community Trust, which donated \$800,000.





## What's it got?

The best sports hall in the Upper Clutha, with a state of the art floor, tiered seating for 250 people and the capability to be configured to suit a variety of sports:



2  
basketball  
courts

OR



2  
netball  
courts

OR



3  
volleyball  
courts

OR



4  
badminton  
courts

OR



2  
tennis  
courts



There are  
lockable  
storage  
facilities  
as well.

## It's not just about sports

The Wanaka Recreation Centre is designed to host large and small functions, including sit-down dinners, concerts, conferences, seminars, workshops and plain old meetings.

## Just ask

Come along to the open days, or contact our Wanaka-based venues coordinator, Christine Schafer, to find out more, including bookings and prices. 4430024 or [christine.schafer@qldc.govt.nz](mailto:christine.schafer@qldc.govt.nz)

**Wanaka Recreation Centre**  
QUEENSTOWN LAKES DISTRICT COUNCIL



*The medal winning Alpine Synchro QT Team, from back left Paige Cusiel, Zoe Ries. From front left: Natalie Sturt, Amelia Maund and Emmerson Dickson.*

## SYNCHRO STARS

Early this month, some members of our Alpine Aqualand Synchronised swimming team competed in the South Island Synchronised swimming championships in Invercargill. They scooped up three medals in just their first competition – great effort!

**Emmerson Dickson:** Silver for the Individual Dolphin Figures

**Alpine Synchro QT Team:** Silver for Dolphin Free Combo Routine (Team Combo Routine)

**Paige Cusiel:** Bronze for 12 and under solo routine.

## We're still hearing you!

And will be until at least early next year. The hearings for Stage 1 of the Proposed District Plan are underway. As you read this, we'll be finishing up hearings covering the submissions

received on Historic Heritage (chapter 26) and Protected Trees (chapter 32). Next off the ranks are Subdivision and Development (chapter 27), kicking off around late July.

Want to stay up-to-date on the District Plan Hearings? Sign up to our weekly email updates – just visit [www.qldc.govt.nz](http://www.qldc.govt.nz) – go to the District Plan page and enter your email address.

All sessions are open to the public and a full schedule of dates, times, venues, submitters is on our website [www.qldc.govt.nz](http://www.qldc.govt.nz) – just follow the link from the front page.



## BUSY AS A BUILDING INSPECTOR!

**Forget the old cliché “busy as a bee” – round here if you’re flat out, you’ll be “busy as a building inspector”.**

Applications for building consents continue to pour in, reflecting the buoyant local economy and demand for new construction. Between January and the end of May this year, we received 754 applications for building consents of all kinds, well up on the 575 during the same period in 2015.

In May alone we received 173 applications.

Processing all this paperwork isn't a quick

job, nor can it be done by just anyone. The integrity of the homes we live in, the buildings we work in is all based on a skilled assessment of plans, materials, and workmanship.

Nationally there is a shortage of skilled and experienced building consent officers and building inspectors, and we are fishing for qualified staff in the same small pool as every other Council in the country.

Currently we're looking to hire six new staff in our building control unit, and filling the gaps with consultants in the meantime.

All this means that at times we are still struggling to process building consent applications within the timeframes that the law requires. We know that any delay is frustrating to applicants, who want to get on with their projects as soon as possible.

If you're planning to put in an application for a building consent, you can help by getting in early – well in advance of your proposed start date. Make sure that all the documentation is completed, accurately and in full. And when it comes to needing a building inspection, think ahead and contact QLDC to book an inspection in advance.



# PROJECT SHOTOVER ON TRACK AND ON BUDGET

**The \$23.5 million dollar upgrade to the Wakatipu's sewage treatment system, Project Shotover, is well underway and expected to be completed in September. It will then begin a commissioning period of around three months with the aim of being fully operational by mid-December**

The upgrade will see two thirds of waste from local communities treated in a new biological nutrient removal system in huge concrete tanks currently under construction on the Shotover Delta, just downstream of the Shotover Bridge.

The new biological nutrient removal plant uses bacteria to transform the organic material in wastewater into simple substances that will not decompose further, resulting in a much cleaner end product.

This is achieved using the Modified Ludzack-Ettinger (MLE) process where raw sewage is screened to remove the bulk of the solids and then pumped through a series of tanks. The first tank starves the bacteria of oxygen, causing them to begin to break down elements in the waste. The second tank then feeds the waste with an oversupply of oxygen, causing biological processes that further treat the material.

What remains is then pumped into a settling tank that further separates and clarifies the resulting liquid. The processed clear water is then treated with ultra violet light and pumped out of the system. Some of the remaining solids are then sent back to the start of the process to begin it all over again, while the rest is pumped into a dewatering plant where it is dried out.

This upgrade has been designed with future growth in mind and can easily be expanded as the district's population increases.

Once the upgraded plant is commissioned, any discharges will meet the recreational bathing standards and also comply with nutrient and E coli levels set by the Otago Regional Council.

It's all just part of the wondrous journey that begins when you flush your loo at home.

## PAYWAVE YOUR PARKING

Wondering what the black box is on the pay and display machines? It means Paywave is available – just swipe, put your ticket in your car window and you're away.

Forget loose change, now you can pay for parking using Paywave. All QLDC pay and display machines have been fitted with paywave facilities so if you've got Visa, Mastercard or Europay, paying for parking is just a swipe away.

All of the other payment options remain the same: cash, text to park (Vodafone and Spark customers only) and credit/debit cards.



Nobody knows the local Wanaka market better

**HOME&CO.**  
PROPERTY MANAGEMENT

Do you own or are you building or buying a rental property?

The H&C Property Rental Process provides a basis for decision-making. Free appraisals & discussion.

### COLLEEN TOPPING

NZ Property Manager of the Year 2013 & 2010 - Real Estate Institute of NZ  
• More than a decade of local experience

My Standards  
• Personalised Service  
• Professional qualifications  
• Excellence is my minimum



021 225 RENT  
(021 225 7368)  
rent@homeandco.co.nz  
www.homeandco.co.nz

# GLASS RECYCLING IN THE WAKATIPU

**You may have heard that QLDC has suspended recycling the glass that Wakatipu homes and businesses have put out for collection. This is quite a complicated issue and not one that's easily solved.**

At present, the recycling bin system accepts all types of recyclables, including glass, cans, paper and plastic. This mixed material is sorted under contract and sees around 95% of the non-glass material being recycled in both Wakatipu and Wanaka, which is fantastic.

However when it comes to glass, the underlying issue is that our current recycling systems in the Wakatipu result in a standard of recovered glass that isn't commercially attractive to glass recycling companies. We end up with a large quantity of mixed coloured glass, which can't be recycled into new bottles or other products as it is co-mingled with other materials, including plastic, paper and cardboard.

Until recently QLDC had a contract in place with Fulton Hogan to take co-mingled glass from the Wakatipu collections. The glass was crushed and used for roading aggregate.

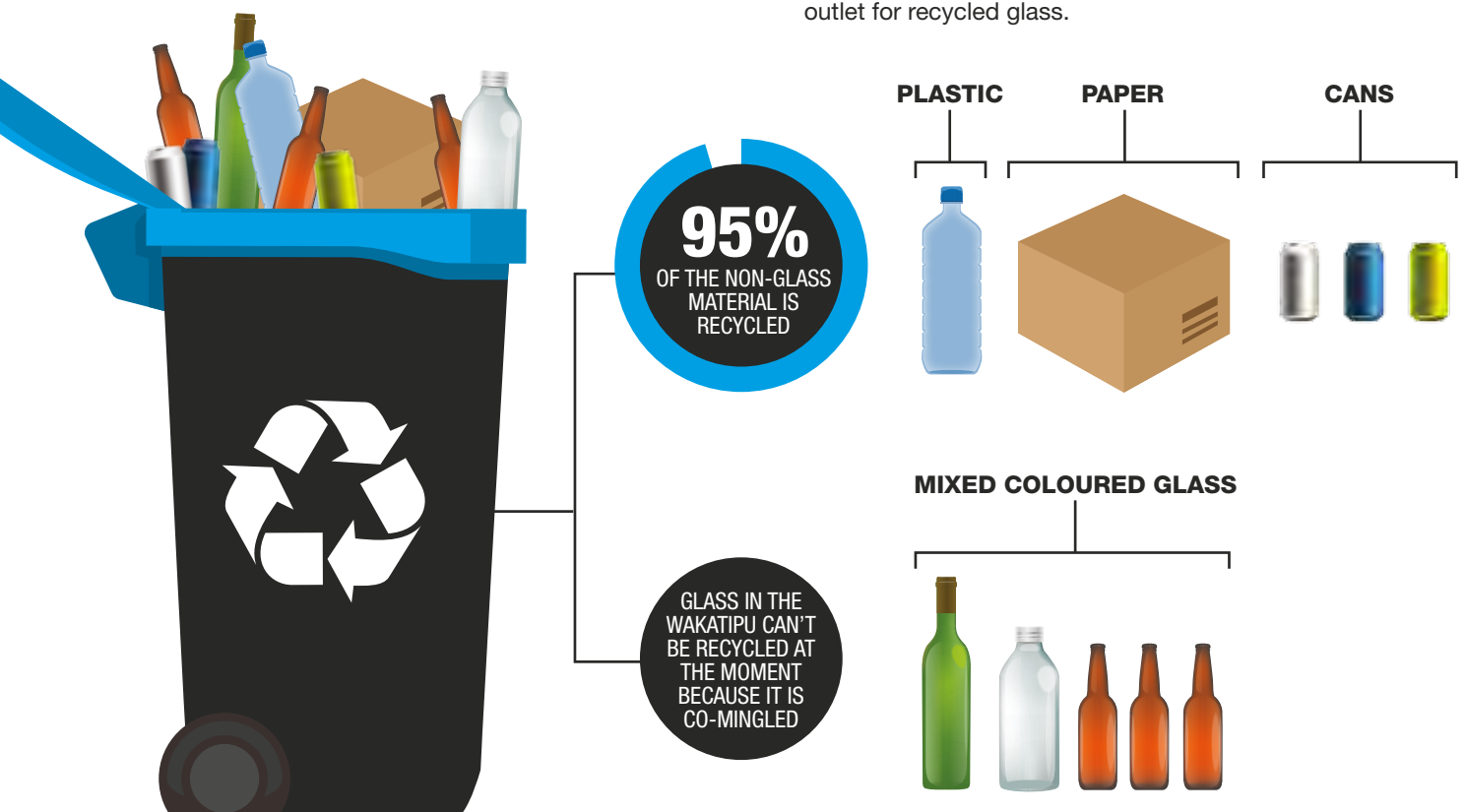
QLDC's co-mingled glass recycling has always contained a level of other material but more recently this has become a problem for recycling into roading aggregate.

The challenge of finding an option for glass recycling from co-mingled collections is not a localised problem – in fact it's an international issue. In New Zealand and overseas, many councils are struggling to find an outlet for used glass.

There is a national market for colour sorted glass but this would require significant changes to the way we collect glass and other recyclable materials from commercial and residential properties in Wakatipu. In Wanaka glass is collected separately from other recyclables and then colour sorted as part of the collection process at the kerbside. This glass continues to be recycled.

Work is now underway to consider all alternatives to the way our recyclables are collected and processed.

In the meantime, please do continue separating out your recyclable material from your other refuse and put it out for collection in your blue bins. We have markets for the plastic, paper and metal that we collect and we are optimistic that in time there may once again be a viable outlet for recycled glass.





# foodie book group

Share your love of food with like-minded people at Wanaka Library's popular Foodie Book Group. This food-lovers get together features a different speaker and theme every month. **ALL WELCOME.**



## ONE FOR THE MEATLOVERS

The next catch up is **THURSDAY 21 JULY, 5.30 – 7 PM** and features Bruce Scott from The Butchers Block and Smokehouse Wanaka talking about all things meaty.

**THE BUTCHER'S  
BLOCK**  
AND  
SMOKEHOUSE  
wanaka

## AND NOW FOR SOMETHING COMPLETELY DIFFERENT...

On **THURSDAY 18 AUGUST, 5.30 – 7PM**, the theme will be *Dinner with A Vegan*, featuring our very own Library Assistant Eve Marshall-Lee.

**libraries**  
Queenstown Lakes



## HOLIDAY CRAFT SESSIONS

School holidays are coming! Queenstown, Arrowtown, Wanaka and Hawea Library are holding craft sessions over the two week break. These sessions are free but need to be pre-booked. Like Queenstown Lakes Libraries on Facebook or check out [libraries.codc.govt.nz](http://libraries.codc.govt.nz) for the full programme.

**libraries**  
Queenstown Lakes

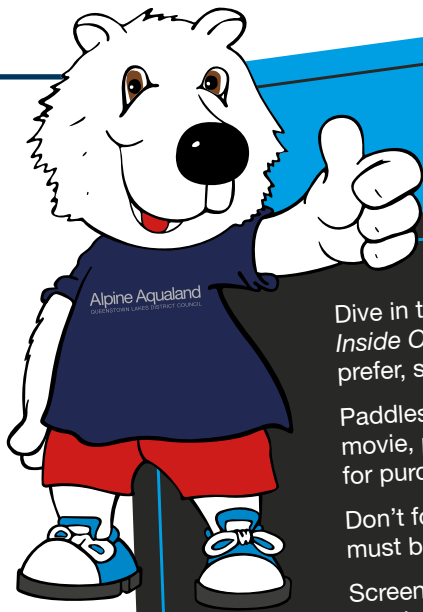
## SCHOOL HOLIDAY PROGRAMME

**Monday 11 July  
– Friday 22 July**

See customer services for a brochure and booking form, or visit: [sportrec.qldc.govt.nz/kids](http://sportrec.qldc.govt.nz/kids)



 **QUEENSTOWN  
LAKES DISTRICT  
COUNCIL**



## DIVE-IN MOVIE | 2 JULY

Dive in to Alpine Aqualand and watch the family blockbuster *Inside Out* from the warmth of our leisure pool. Or if you'd prefer, stay dry and watch it from poolside.

Paddles, our polar bear mascot will be there enjoying the movie, plus we'll have a range of snacks and drinks available for purchase.

Don't forget, if you're bringing a toddler under 3 years, they must be wearing swim nappies and tight fitting togs.

Screening starts 6pm. Normal pool entry applies or get our special \$10 family entry deal from 5pm, allowing entry to two adults and two children (excluding the hydro slide).

## ARROWTOWN FIRE TRUCKS



The Wakatipu Volunteer Rural Fire Force supported by the Arrowtown Volunteer Fire Brigade was recently presented with two new rural fire trucks to add to the emergency response arsenal in the Wakatipu.

QLDC contributed \$80,000 towards the purchase of a first response mobile water tanker and a 4x4 appliance, which will be used to better respond to fires in remote areas.

The tanker will be used to provide water for fires anywhere in the basin. Until now there have been no first response tankers, meaning additional appliances have sometimes been tied up with the sole purpose of providing water. The new tanker

will be particularly useful in situations where water is not immediately available.

The 4x4 appliance will be mainly used to fight vegetation fires and its configuration makes it well suited to get off road to deal with wildfires both quickly and safely. Its major advantage is the ability to move along a fire edge and pump water at the same time – most urban fire engines must be stationary to pump water.

The purchase of the new vehicles is recognition by both QLDC and the Otago Rural Fire Authority of the growing need for rural firefighting resources, and of the very important job that our volunteer fire forces and brigades do in the community.



# WHAT TO DO WHEN...

**When illness strikes it's not always easy to know what to do and how to manage it. When are symptoms serious? What can you do at home? How do you know when your child is deteriorating? When should you access medical services?**

You can find the answers to these questions at a seminar called "What to do when ..." at the Lake Wanaka Centre, Saturday 30 July.

You'll hear from paediatricians, nurses, paramedics, an intensive care specialist, helicopter rescue teams, doctors, emergency department staff and mindfulness experts.

The day includes hands-on workshops covering wound care, CPR, seizures and choking.



**Check out the details at  
[www.empoweringeducation.co.nz](http://www.empoweringeducation.co.nz)**

## **RENT-A-ROOM WOULD LIKE TO LEASE YOUR PROPERTY**

**We have  
over 5 years  
experience  
managing  
properties in  
Queenstown  
and Wanaka,**

**providing accommodation to over  
1,000 tenants. We lease properties  
under a single tenancy agreement  
and rent them room by room.**



**Why rent to Rent-A-Room?**

- Higher than average returns
- No management fees
- Weekly inspections
- Option to provide fully furnished property
- Bonus payment of two weeks rent upon signing a two year lease
- We can fully furnish your property.

**For more information and  
competitive quote contact:**

**Henrik de Blij  
Managing Director  
Rent-A-Room Ltd  
021-923553  
[henrik@rentaroom.org.nz](mailto:henrik@rentaroom.org.nz)**

**RENT-A-ROOM**  
**MANAGING PROPERTIES ROOM BY ROOM**

# SNOW FARM NZ – TAKE A FRESH LOOK

Snow Farm is New Zealand's home of cross-country skiing and also offers heaps of other fun activities for the whole family to enjoy this winter.

Easily accessed from Cardrona Valley Road, Snow Farm's network of gently undulating trails are the perfect place to learn cross-country skiing or take yourself off for a cardio workout.

Programmes run throughout the season for beginners, improvers and kids and look out for locals' days with heavily discounted rates – a great opportunity to give it a go.

For something a bit different, why not hire snowshoes and enjoy breathtaking views at walking pace, or ride out on a 'Fatbike' with bigger tyres specially designed for gripping on snow? Snow Farm is also one of the only places in NZ where you can enjoy the thrill of an authentic dog-sledding adventure.

The base building has a café, bar and restaurant plus a snow fun zone with tubing and sledding just outside. There's fully-serviced accommodation at Snow Farm Lodge and two cosy backcountry huts within easy reach.

QLDC owns the land where the Snow Farm is located and manages it as a recreation reserve. The Pisa Alpine Charitable Trust (PACT) manages the Snow Farm on a not-for-profit basis with any surplus reinvested in the operational equipment and facilities.

**For more  
information visit  
[www.snowfarmnz.com](http://www.snowfarmnz.com)**







## ON THE ROAD TO THE 2020 PARALYMPICS

This time last year we told you about Chloe Sturt, a 19 year old with big dreams of representing New Zealand at the 2020 Paralympics playing Boccia.

Chloe is closer to achieving that dream, after a successful twelve months of competing. She is now ranked number one female player in New Zealand after a string of successes at national championships and tournaments around the country.

Chloe first took up Boccia when she was 10 and has been playing competitively for the last two years. The former Cromwell College student practices twice a week at the Queenstown Events Centre under the wing of Pippa Smith, who would like to establish a bigger programme at the centre for young people with disabilities.

Her road to the 2020 Paralympics is lengthy and expensive. "The most important and difficult part of

this process is to maintain my National Ranking, which I have achieved from just one National Championship tournament," Chloe says.

"This can only be achieved by competing and placing in national and international tournaments over the coming years, gaining invaluable skills, contacts and tactics. These tournaments cost me in excess of \$2,000 each time."

If you would like to assist Chloe in maintaining her National Ranking, head to the Givealittle website and search for **chloethebocciaboss**. Every contribution helps and is hugely appreciated.

If anybody is interested in joining Chloe and the Queenstown Boccia Club at Queenstown Events Centre, please contact Pippa Smith [pip.smith@qldc.govt.nz](mailto:pip.smith@qldc.govt.nz)

## OLD CARPET LIVES TO SEE ANOTHER DAY

Wanaka Library has been getting a winter spruce-up. A couple of month's back we repainted the ceiling and earlier this month we re-carpeted the whole building.

The old carpet is enjoying several new lives – some of it has gone to the hall in the Arts Building, the rest has been donated to the Te Kakano Trust.



Andrew and Charlotte Penniket loading up donated carpet for the Te Kakano Trust.

**FREE WIFI**

**HOTSPOTS**

Thanks to a partnership between DowntownQT and HQ WiFi, there are now four new places in central Queenstown where locals and visitors alike can tap into WiFi for free.

The hotspots are on the Village Green, The Mall, in Beach St and Earnslaw Park and allow every user up to 1GB of free data each day.



## QLDC CONTACT LIST AND HOURS

### QLDC & SERVICE CENTRES

#### Queenstown Office:

10 Gorge Road  
Private Bag 50072  
Queenstown  
Customer Services:  
Phone: 03 441 0499  
E-mail: [services@qldc.govt.nz](mailto:services@qldc.govt.nz)  
[www.qldc.govt.nz](http://www.qldc.govt.nz)

#### Wanaka Office:

47 Ardmore Street  
Wanaka  
Phone: 03 443 0024  
Office Hours:  
Mon – Fri 8.00am – 5.00pm

### QUEENSTOWN EVENTS CENTRE

Arrowtown Athenaeum Hall  
Queenstown Memorial Hall  
Lake Hayes Pavilion  
Lake Wanaka Centre  
Alpine Aqualand  
Wanaka Pool  
Sports fields  
Phone: 03 450 9005

### TRANSFER STATIONS

**Wakatipu:** End of Glenda Drive  
Frankton Industrial Area  
Phone: 03 4510106  
**Upper Clutha:** Ballantyne Road  
Phone: 03 443 6063

### HARBOURMASTER

Phone: 027 434 5289 and 027 414 2270  
Email: [harbourmasterqt@smsl.co.nz](mailto:harbourmasterqt@smsl.co.nz)

### LIBRARIES

**Arrowtown** Buckingham Street Phone: 03 442 1607  
Hours: Monday – Friday 10.00am – 5.00pm Saturday 10.30am – 12.30pm

**Glenorchy** Islay Street Phone: 03 442 4378  
Hours: Wednesday 1.30pm – 3.30pm Friday 1.30pm – 3.30pm

**Queenstown** 10 Gorge Road Phone: 03 441 0600  
Hours: Mondays, Tuesdays, Wednesdays & Fridays 9.00am – 5.30pm  
Thursdays 9.00am – 7.00pm Saturdays 10.00am – 5.00pm

**Wanaka** Dunmore Street Phone: 03 443 0410  
Hours: Mondays, Tuesdays, Wednesdays & Fridays 9.00am – 5.30pm  
Thursdays 9.00am – 7.00pm Saturdays 10.00am – 5.00pm

**Hawea** 23 Myra Street Phone: 03 443 9371  
Hours: Monday 10.00am – 12noon  
Tuesday & Wednesday 10.00am – 5.00pm  
Saturday 10.00am – 2.00pm

**Kingston** Phone: Queenstown 03 441 0600  
Hours: Saturday 10.00am – 2.00pm

**Makarora** Phone: 03 443 8342  
Hours: Tuesday 11.00am – 1.00pm & Thursday 3.00pm – 5.00pm

Scuttlebutt is published bi-monthly by Queenstown Lakes District Council to inform ratepayers and residents of council activities.

EDITOR: MICHELE POOLE

✉ [michele.poole@qldc.govt.nz](mailto:michele.poole@qldc.govt.nz)  
Feedback and ideas are welcome.

TO ADVERTISE CONTACT:

Sarah Douglas  
✉ [sarah.douglas@qldc.govt.nz](mailto:sarah.douglas@qldc.govt.nz)