

Scuttlebutt

THE QUEENSTOWN LAKES DISTRICT COUNCIL NEWSLETTER // JUNE/JULY 2019 // ISSUE 132

**RETHINK, REDUCE,
REUSE AND RECYCLE
TO MAKE LANDFILL THE LAST RESORT**

**YOUR NEW RUBBISH AND
RECYCLING COLLECTIONS
START 1 JULY 2019.**

**GET ALL THE DETAILS ON HOW TO
USE THE NEW SERVICE INSIDE.**



ALSO INSIDE – check out a draft Frankton Masterplan and have your say by 18 July.

INSIDE

06

**VISITOR
LEVY
UPDATE**

16

**2019
ELECTIONS**

18

**ALPINE
AQUALAND
REPAIRS**

22

**ARTS
FUNDING**



Tell us if you want to save paper and read Scuttlebutt online. See page 21 for details.



Scuttlebutt is printed on paper sourced from sustainably managed forests.



Scuttlebutt is recyclable. Please recycle me.

YOUR NEW RUBBISH AND RECYCLING COLLECTION SERVICE STARTS 1 JULY

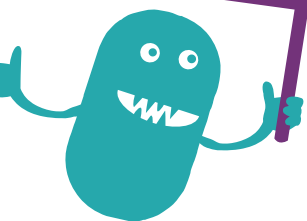
IF YOU'RE ELIGIBLE FOR THE SERVICE AND HAVEN'T RECEIVED YOUR BINS – PLEASE CONTACT OUR CUSTOMER SERVICES TEAM ON 03 441 0499 OR EMAIL SERVICES@QLDC.GOV.T.NZ

By now, properties that have a residential component to their rates, should have received their new wheelie bins ready for collections to start.

The new service is just one of the steps we are taking to move towards being a zero waste district.

THE THREE BINS AND WHAT GOES IN:

IF IN DOUBT
LEAVE IT OUT



It only takes a small amount of contamination to send everyone's glass to landfill. Put only clean glass bottles and jars in the glass recycling bin. All other glass goes in the rubbish, including drinking glasses, heatproof glass (like pyrex) and window glass. Lids go in the rubbish bin too.



RUBBISH

Includes coffee cups, nappies, tetrapak, lids, plastic bags and aerosols

DON'T put hot ashes, lithium batteries or chemicals in the rubbish bin. They might leak or start a fire. Head to www.qldc.govt.nz/hazardous-waste to find out how to dispose of this sort of thing safely.



GLASS RECYCLING

Clean glass bottles and jars only.



MIXED RECYCLING

Clean plastic bottles and containers (1-7), paper, cardboard and cans.

WHAT TO DO WITH ORGANIC WASTE

While it's tempting to throw those lawn clippings or rose prunings into the wheelie bin – it's really important we try not to. When food and green waste ends up in a landfill, it can start rotting in anaerobic conditions and release methane, a harmful climate change gas.

We're working on ways to keep organic waste out of the landfill, including a potential future kerbside collection. We also fund and subsidise a number of initiatives to help people deal with their organic waste at home:

- > Dr Compost – learn how to effectively compost at home. There's no such thing as a stupid question; so if you're wondering how to start composting or get yours

working better, jump on Facebook or email him at drcompost@wastebusters.co.nz

- > Half price Bokashi buckets - available at Council offices and at Wastebusters in Wānaka
- > Subsidised worms for worm farms - available from Central Wormworx

Find out more at www.qldc.govt.nz/cut-your-waste

COLLECTIONS

The blue glass bin and yellow mixed recycling bin will be collected on alternate weeks. The red rubbish bin will be collected weekly.

Collection day top tips:

- > Check your calendar or set a reminder online to ensure you put the right bin out on the right week.
- > Your bins should be out on the street by 7.00am and brought back in the same day.
- > Park your bins up on the footpath or grass verge nearest the road.
- > The front of the bins should face the road with the lids closed flat.
- > Make sure each bin has space to allow for collection (around 50cm apart is good).
- > Only bins under 70kg will be collected.



KEEN ON A WEEKLY 'WHAT'S
IN THE BIN' COLLECTION
REMINDER BY TEXT OR EMAIL?
REGISTER ONLINE AT
WWW.QLDC.GOV.T.NZ



Like a giant magical duck-headed horse galloping through the countryside, vivian+espie will enrich the lives of all that they come into contact with.

vivian+espie
resource management and landscape planning

(03) 441 4189
WWW.VIVIANESP.C.O.NZ

WHAT ABOUT THE OLD BINS OR CRATES?

There are lots of potential uses for your old blue bin or black crate. Recently, we asked our Facebook community for their tips on ways to reuse the bins or crates – here are some of our favourites:

- > Use it to store firewood or pinecones in winter. It will keep it dry and is easy to move around
- > Drill a few holes in the bottom and plant spuds in it
- > Use it to store large quantities of pet food
- > Repurpose it into a compost bin

IF YOU DON'T WANT TO REUSE YOUR BIN OR CRATE, THEY CAN BE DROPPED OFF AT THE FOLLOWING LOCATIONS:

- > Wastebusters in Wānaka
- > Frankton Transfer Station in Queenstown

TIP FROM FIRE & EMERGENCY AND CIVIL DEFENCE

The recent earthquake rumble has reminded us of the importance of having an emergency kit ready – as we know, the Alpine Fault Earthquake (AF8) is not a case of 'if', but when.

A member of Frankton Fire Brigade has taken his old recycling bin, and after a thorough wash down with disinfectant and a dry off, has turned it into an emergency kit storage unit that is easy to store in the garage, and easy to move around.

Civil Defence recommends having at least seven days' worth of food for the family. The normal recommended amount is three days, but with the unpredictability of the AF8, a food supply of seven days is recommended as well as three litres of water per person, per day. Don't forget your pets will need to be fed as well, so make sure you've sufficient supplies for them too.

Checkout the following link to find out what other items you will need to keep you and your family safe during an emergency:

<https://getthru.govt.nz/emergency-survival-items>



BLUE COUNCIL RUBBISH BAGS ARE NOW A THING OF THE PAST AND WILL NO LONGER BE COLLECTED.

STATE OF THE ART TRUCKS COMING TO TOWN



Whoever said a truck can't multi-task has never come across a split body truck! This state of the art vehicle will be used on smaller streets and within town centres and can collect all three bins in separate compartments. This reduces unnecessary truck movements by completing collections in one hit.

It gets better, one of these vehicles is also fully electric, quiet and emissions-free. It's the first of its type in Aotearoa New Zealand, and only the third fully electric waste collection truck to be commissioned in the South Island.

SAVE OUR STUFF

Save our Stuff is the umbrella logo for the new waste services contract. In a landfill, stuff never really goes away because a landfill is not designed for things to break down and disappear. Like a zombie, our stuff lives on after we throw it away. In a good way, if it's repaired, composted, recycled or upcycled. Or, in a not-so-good way in the landfill or in our oceans if it's thrown away as rubbish or litter.

That's where the little round guy in the SOS logo comes from. He's a zero waste zombie (or zwombie) - representing the future potential of our stuff. Will it come back as something useful? Or will it linger on for decades or even centuries as discarded rubbish? The story of waste is the flip-side of the story of our stuff. It's time to rethink how we design, use and throw away stuff so that landfills really do become the last resort.

You'll start to see the SOS logo and super cute Zwombies around a lot more now that the new service has started.



ZERO WASTE FUNDING BOOST

Last year our community told us that we should be doing more to support community-driven zero waste initiatives.

We agreed and responded by setting up a Zero Waste Community Fund. Almost \$50,000 was awarded to a number of local initiatives last month, and we're looking forward to seeing the positive effects these projects will have in our drive towards zero waste and a sustainable district.

The grants approved through this funding round include:

- > Sustainable Queenstown, Dishrupt: Contribution towards a service and education trailer providing reusable dishes and cups at local public events.
- > Plastic Free Wanaka, Waste Free Wanda: Develop a collection of catchy, interactive songs on waste reduction and shared through community performance.
- > ONE New Zealand/Plastic Free Wanaka: Implement a cup reuse scheme in Wānaka cafes supported by a behaviour change, education and community engagement campaign.
- > Waste Free with Kate: Presentations at secondary schools to introduce waste free period options and online resources for health teachers to share with students.
- > Local Food Wanaka, Autumn Apple Drive: Community events teaching a hands-on approach to using surplus fruit.

A huge thank you to everyone who took the time to apply for funding. The mix of projects and ideas has given us a much broader understanding of what's possible for waste minimisation initiatives in the community.

We plan to build on this momentum and will hold another funding round in 2019. Keep an eye on our website or social media for details.

CENTRAL LAKES POLYFEST 2019

Mīharo are once again thrilled to bring Polyfest to the Central Lakes Region. Hundreds of tamariki will take the stage and showcase their Māori, Pasifika and Multicultural performances.

Polyfest dates are 22 – 23 October, being held at Memorial Centre in Queenstown. Registrations are open to early childhood, primary and secondary groups and can be made online at <https://murihikupolyfest-6-1.youcanbook.me>

Everyone is welcome to come and be a part of the event. Entry fee is a gold coin donation.

If you are interested in becoming a volunteer, get in touch with Mandy@miharo.org

MORE PROPERTY MANAGEMENT AWARDS

than you can shake a stick at?



Now that's
smart!

Have your property managed by the best!
Contact Housemart for a rental appraisal today.

HOUSEMART
HOW SMART
Ph: (03) 442 3815

www.housemart.co.nz

NO. 516 IS COMING

The Queenstown Lakes community is now the proud owners of a large property at 516 Frankton-Ladies Mile Highway.

The purchase, which was announced back in May, is a valuable step towards the long-term development of much-needed community assets and services for the surrounding communities of Lake Hayes Estate and Shotover Country as well as the wider district.

It will take some time to work through the final use of the property. However it is likely to include community and sports facilities and parks and open spaces. We'll keep you updated as plans progress.

CLEAR MANDATE ON VISITOR LEVY

Queenstown Lakes District residents have provided Council with a clear mandate with over 81% of participants voting in favour of introducing a visitor levy.

The result of a recent non-binding referendum shows that our locals recognise the desperate need to fund visitor-related infrastructure and services within the Queenstown Lakes District.

Not only was the result clear cut, the 42.04% return was significantly higher than anticipated with a 30% return for a non-binding referendum considered high. By comparison, the 2018 Tauranga Museum poll saw a 31.23% result and the more recent Hastings Business Improvement District poll saw a 32.62%.

The non-binding referendum was a significant step but now the hard work really starts.

The next step is to formally present the final outcome of the referendum to central government and seek support for a change in legislation. The timeline for this and details of the subsequent work programme will need to be worked through. Watch this space!

81.17% of voters in favour of introducing a visitor levy.

NEW ENVIRONMENTAL GUIDELINES ON THE WAY

Over the past months, we've been working on new environmental management guidelines that could be built into the resource consent application process.

If approved by the Council on 27 June, the guidelines will provide applicants and consultants with baseline guidance

for how to manage their developments to ensure any land disturbance or construction activities don't have a negative effect on our environment and waterways.

Keep an eye out on the QLDC website and Facebook page for details.

TRADE WASTE REGISTRATION SYSTEM TO START

In July, we'll be asking businesses to register their trade waste discharge.

This registration process will allow us to assess the quality and quantity of a business's trade waste discharge and the potential effects it might be having on the environment. This will be followed up with recommendations on how to improve the discharge quality and support the collective effort to minimise our environmental footprint.

This work is an important step in implementing our Trade Waste Bylaw, which applies to all trade premises in the district and regulates trade waste that is discharged into our wastewater network.

This work will also be used to improve on our current bylaw which is set to be reviewed in the coming year.



Heat your home the easy way

HIGHLY
COMPETITIVE

Supplying the Lakes District with competitive home heating diesel

BONUS! With a new mini tanker based in Central we can service all your home heating needs.

BONUS! Discounted competitive pricing.

Call us today for your free comparison quote.



South Island wide

0800 44 00 14

www.rdp.co.nz

BEAT THE INCREASE!

Some swim prices at Wanaka Recreation Centre (WRC) and some prices at Alpine Health and Fitness (Queenstown Events Centre/QEC) are increasing from 1 July.

These were announced on 1 May 2019 to allow for the two-month notice period in existing members' contracts. Since then, QLDC Sport and Recreation has been encouraging people to 'beat the increase' and take advantage of current, lower rates for pre-paid membership and concessions (multi-visit passes).

Increases at WRC bring prices in line with Alpine Aqualand, the other main council-managed aquatic facility located at QEC. This follows Council's approval of changes to a range of fees and charges for community services in December 2018 after a review of its Community Facilities Funding Policy.

The new aquatic facility pricing is focused on some increases to adult casual prices. There are no increases to children's casual swim prices or memberships, and the prices of pre-paid swim membership for seniors, beneficiaries and families also remain unchanged.

Similarly at QEC, there are no changes to membership and casual entry prices for seniors, beneficiaries or high school students to access gym and group fitness facilities. This is the first time any prices at Alpine Health and Fitness have increased since 2014.

When this issue of Scuttlebutt hits the streets there'll be a few days left to beat the increase, even if you're an existing member, so don't delay! Drop by either venue and we'll help find the best deal for you.

A full list of prices for both Alpine Health and Fitness and the pools at Wanaka Recreation Centre are available on the QLDC Sport and Recreation website:

<https://sportrec.qldc.govt.nz/>

Did you know that swim membership of either Alpine Aqualand or Wānaka Recreation Centre gives you free access to the pools* at the other facility?

** excluding the hydroslides and learners' pool at Alpine Aqualand*



YEAH BOINZ!

Our Building Services team was recently presented with an award for dedication to exceptional customer service and organisational excellence at the Building Officials Institute of New Zealand (BOINZ) Excellence Awards. The team has been making significant progress in this space over the last three years and we are incredibly proud of this achievement.

QLDC Building Services Manager Chris English accepts the customer service award on behalf of his team.

WHAT'S IN A LABEL?

Many household products contain chemicals that are considered hazardous. But do you know what to look for on product labels and understand what they mean?

Labels on products containing hazardous chemicals explain the physical, health and environmental risks that you need to be aware of. This means you'll have the info you need to use, store, and dispose of them safely and reduce any potential risks in your home and the environment.

What to look out for:

Look out for signal words such as 'Danger' or 'Harmful' and make sure you clearly read the safety instructions. Words like 'warning' and 'caution' are usually safer but always double check.

It's always important to look out for other warnings too, some more common examples include:

- > highly flammable liquid and vapour
- > may cause respiratory irritation
- > causes skin irritation
- > use only in a well-ventilated area
- > keep out of reach of children
- > keep cool - protect from sunlight
- > store in a dry place
- > store in corrosive-resistant container
- > store away from other materials
- > wash contaminated clothing before re-use
- > if skin irritation occurs seek medical attention
- > do not induce vomiting

The most important thing – always be careful with all chemicals.

Please always put safety first and treat all chemicals with caution – even if they haven't been classified as a hazardous substance.

Remember that even products labelled as 'natural', 'organic' or 'environmentally friendly' can be harmful – so make sure you read those product labels too.

CLIMATE ACTION PLAN UPDATE

By the time you read this, Council will have been presented with a draft climate action plan to build the district's resilience to the harmful effects of climate change and transition to a zero carbon future.

If approved, we'll engage with the community on the draft plan in July/August. Keep an eye on the QLDC website and Facebook page for details.

Rentals Made Easy



Great
returns

Smart
solutions

Sound
advice

Making renting easy for property owners and tenants is our priority.

Innovative, market-leading systems and a solutions-based approach set our experienced team apart.

Speak to the property management purists about how to maximise your investment – Pure Property.



P +64 (0)3 409 0480

W purepropertyrentals.co.nz

Top floor, 10 Athol Street, PO Box 1574, Queenstown 9300, NZ

Imagine it's 2048, what legacy would you like to leave for future generations in Te Kirikiri / Frankton?

Te Kirikiri is a significant area for Kāi Tahu, known as a place of settlement and mahika kai, and lying at the junction of traditional trails linking to the wider landscape. Frankton has changed a lot in recent years. From rural land and holiday cribs into a complex mix of activities for locals and visitors, with much more to come. It's a dynamic place, but lacks a cohesive plan to bind Frankton's emerging community together.

Until now.

Following intensive community and stakeholder engagement spanning almost a year, we have collaboratively produced a draft Masterplan to show how land use and transport could be well integrated to address the future needs of Frankton.

We invite you to check out the draft plan on the next page and consider the actions being proposed with an open mind to the future. Then complete the feedback form and let us know if you think we've got it right or if there's anything missing. Feedback closes on 18 July.

The story so far

In late 2018, Wakatipu Way to Go, a partnership between QLDC, NZTA and ORC, decided to consider Frankton as a whole and establish a framework to join it all up.

**Share your views on the
Frankton Masterplan –
head to [letstalk.qldc.govt.nz/
frankton-masterplan](https://letstalk.qldc.govt.nz/frankton-masterplan)**

Building on the *Your Place, Your Plan* early insights engagement undertaken in September last year, the partnership embarked on a process to develop the Frankton Masterplan and Integrated Transport Programme Business Case.

The project's goals are to:

- > Ensure Frankton remains liveable and a positive experience for visitors, residents and businesses.
- > Integrate all plans, strategies and projects to create better outcomes for Frankton.
- > Give Local and Regional Government, Central Government and private stakeholders confidence to invest.

Establishing agreed outcomes for Frankton:

Together with Treaty partner Kai Tahu and stakeholders, we established key outcomes for the masterplan and came to you in April this year to seek community feedback through question and answer sessions, market day stalls and an online survey. The outcomes you agreed were important included:

- > Enhancing Frankton's role as a hub for the district,
- > Integrating with the lakefront and rivers edges,
- > Living and growing in harmony with nature,
- > Unified and integrated town and local centres,
- > Enhancing the local networks,
- > Nurturing inclusive neighbourhoods, and
- > Enhancing Kai Tahu visibility in the urban environment.

A vision for the future:

"Te Kirikiri Frankton, where our pathways, the lake and the rivers meet"

"At the heart of Te Kirikiri, Frankton is a hub that connects a bustling community of businesses, residents and visitors to Queenstown and the region. Embracing sustainable development, future generations live in harmony with the natural environment."

Where have we landed – A Draft Masterplan

Since community engagement in April, we've been working on weaving these preferred outcomes into a draft Masterplan to share with you. This is underpinned by a range of achievable land use and transport actions and sets out how Frankton might look by 2048. We can't achieve all of these things at once - they'll need to be staged over a 30-year timeframe in collaboration with our Wakatipu Way to Go partners and a joint community effort.

Ten key actions proposed in the draft Masterplan include:

1. Improving the arrival experiences into Queenstown via the airport, state highway and trail network, including the establishment of a new Airport-Wakatipu Lake Link and recognising wāhi tūpuna (ancestral landscapes) at the Shotover and Kawarau River crossings;
2. Upgrading State Highway 6 into a high amenity, 50 km/hr urban arterial, recognising the Ara Tawhito (Traditional Trail route) along Frankton Ladies Mile Highway and improving intersections to reduce community severance and improve safety along active travel routes;
3. Using a range of transport options to improve access for people of all ages and abilities. This includes completion of the wider active travel network and linking several local and district centres together through a high frequency, high capacity public transport operating on an orbital loop;

4. Strengthening the relationship between high capacity public transport corridors and more intensive land use activities and built form, such as redeveloping the northern Glenda Drive industrial area for residential living;
5. Integrating the airport terminal and other landside operations into the public transport network and surrounding compatible land uses, including investigating opportunities for the long-term relocation of Lakes District Hospital facilities outside the airport noise contours;
6. Enhancing recreational and community facilities at Queenstown Event Centre, alongside a new transport interchange and Emergency Precinct (e.g. emergency services, civil defence and airport rescue) on the Frankton Golf Course site;
7. Providing more urban parks and greener streets, including creating more direct visual and physical links to Lake Wakatipu and enhanced waterfront parks and reserves with our very own 'Frankton Gardens'.
8. Redeveloping Shotover Delta into a district-wide reserve for informal recreational activities, mahinga kai (food and resource harvesting areas) and potentially a relocated Frankton Golf Course;
9. Shifting current rural infrastructure towards the edge of Frankton to reduce current constraints (e.g. buffers from highways and transmission line corridors) and better accommodate future urban development; and
10. Expressing cultural values, narratives and heritage of Frankton from the perspective of Ngāi Tahu, Chinese, mining and pastoral farming, including creation of the Arranmore / McBride Farm Heritage Precinct.

Share your views on the Frankton Masterplan – head to letstalk.qldc.govt.nz/frankton-masterplan or get details at the Council office, Queenstown Events Centre or libraries.

Next steps

Your feedback will help to inform the completion of the masterplan and business case, before it is finalised and endorsed by the Wakatipu Way to Go partners for the next stage of the business case process and implementation.

To read more background about the Frankton Masterplan head to www.qldc.govt.nz/frankton-masterplan




Te Kirikiri / Frankton

Draft masterplan (2048)

Key

--- Masterplan area

Movement network

-  Public transport route / stops (separated lanes or priority)
-  Orbital bus route / stops
-  Gondola lines / base station (private)
-  Ferry route / stops
-  Street network
-  Active travel network (walking and cycling)
-  New road corridor
-  Freight route
-  Bridge crossing (Active travel and / or public transport)
-  400m (5min) walking distance
-  Park and Ride

Note: Dashed routes subject to further investigation

Constraints

- Airport noise contours (existing)
- ... Transmission lines

Land Use

-  Higher density residential
-  Medium density residential
-  Lower density residential
-  Mixed use (includes residential)
-  Small to medium format retail
-  Large format retail
-  Commercial (excludes residential)
-  Light industrial and utilities
-  Community facilities (buildings)
-  Queenstown Airport Corporation (subject to separate process)
-  Active open space
-  QEC Recreation Masterplan area (subject to separate process)
-  Passive open space
-  Urban park (location and size subject to levels of service)
-  Native revegetation
-  Tussockland / wetland

Note: Land use mix assumes removal of crosswind runway

20 Key features

- 01 Frankton Campground redevelopment
- 02 Emergency precinct
- 03 Events centre extension
- 04 Public transport interchange (estimated location)
- 05 Community hub
- 06 Arranmore/McBride Farm heritage precinct
- 07 Wastewater treatment plant expansion
- 08 Transmission line substation
- 09 Resource recovery centre
- 10 Wastewater ground filtration
- 11 Mahika Kai wetland areas
- 12 Proposed golf course
- 13 Commercial recreation expansion
- 14 Conference and arts centre
- 15 Quayside waterfront and jetty
- 16 Frankton Gardens
- 17 Regional coach hub
- 18 Humphrey St extension
- 19 Lakes District Hospital (long-term relocation)
- 20 Airport-lake link bridge

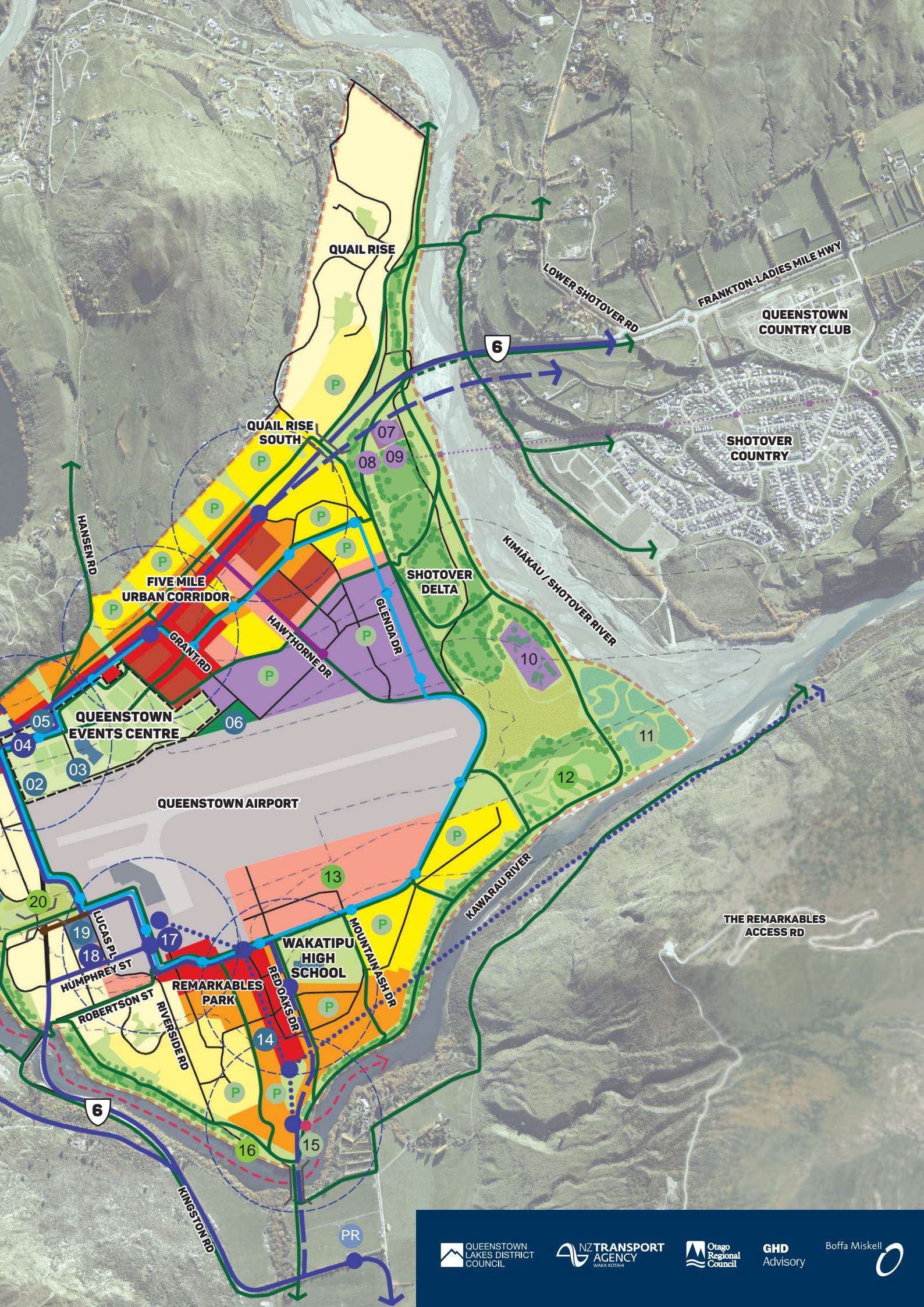


FRANKTON
YOUR PLACE YOUR PLAN



0 600m







Artists impression

Queenstown Airport to Lake Wakatipu Link

(view west from near the airport terminal) will provide a strong visual and active travel connection over State Highway 6 for locals and visitors, reducing the severance between Frankton Flats (e.g. airport, Remarkables Park Town Centre and Wakatipu High School) with the Frankton Arm (e.g. Ferry services, Remarkables Primary School and Frankton Beach).



Artists impression

Five Mile Urban Corridor

(view west along State Highway 6 near Grants Road intersection towards the Queenstown Event Centre) will upgrade the Frankton-Ladies Mile Highway, between the Shotover Bridge and Frankton Village, to create a high amenity, 50 km/hr urban arterial, recognising the Ara Tawhito (Traditional Trail) along this route. This will be integrated with masterplanned improvements to QEC, including maintaining views across Frankton Flats to the wider natural landscapes.

KINGSTON LIBRARY REOPENS AFTER REPAIRS

Kingston Library celebrated its reopening in May with a special morning tea for the local community.

Residents and visitors had been using a temporary service at the St John's Community Rooms since the library was closed for essential repairs and maintenance in December 2018.

Work included erecting scaffolding to clear and strengthen the chimney of the 90-year-old former school building. Queenstown Lakes District Libraries is waiving any charges accrued by Kingston borrowers during the temporary closure in recognition of the inconvenience.

Librarian Annette Dalziel said it was lovely to be back.

"We were very fortunate to have use of the St John's Rooms. Even though we didn't have capacity for our full collection there we focused on quality and rotating items as often as we could," said Annette.

"Now we're back home I'd like to thank everyone for their patience and cooperation. The library is an important part of Kingston life, especially with more people coming to live here permanently. For example, we help residents learn computer skills and always look after travellers who drop by from the campground."

Kingston Library is open on Wednesdays between 3.00-3.30pm and 7.00-8.30pm, and on Saturdays from 11.00am-1.00pm.



Kingston Librarian Annette Dalziel in front of Kingston Library on 'reopening' day.

HOME & CO.

PROPERTY MANAGEMENT

Nobody knows the local Wanaka market better!

WHO WOULD YOU TRUST TO MANAGE YOUR RENTAL PROPERTY?

Only South Island Finalist 2017
NZ Property Manager of the Year

COLLEEN TOPPING & TEAM

- More than a decade of local experience
- Personalised Service
- Professional Qualifications
- Excellence is my minimum
- FREE rent appraisals and advice



021 255 RENT | 443 2273
rent@homeandco.co.nz

www.homeandco.co.nz

ELECTIONS – WHAT YOU NEED TO KNOW

The 2019 local body election is just around the corner – here's what you need to know in the lead up.

MAKE YOUR VOTE COUNT

Make sure you're enrolled by noon on 16 August.

That way, you'll get your voting papers in the mail. If you're not enrolled by this date (and you're eligible to vote) you'll need to do a special vote.

The voting period runs from 20 September until 12 October at 12.00pm.

ELECT19NS

TAKE OUR DISTRICT TO NEW HEIGHTS



Have you ever considered running for Council? Our community needs a diverse bunch of leaders who are keen to drive solutions for the future.

Candidate nominations open on 19 July and anyone 18 and over can stand as long as they are a New Zealand citizen.

If this sounds like you, check out our candidate guide and videos at: www.qldc.govt.nz/elections, and come along to a Council or Wānaka Community Board meeting to get a feel for what is involved.

PARKING AT QUEENSTOWN EVENTS CENTRE

Queenstown Events Centre (QEC) can get pretty busy at times, especially with junior sport over winter.

But safe and lawful parking is essential to ensure the safety of all centre users and avoid getting a parking ticket.

We appreciate these options won't suit everyone. But for those who can, we recommend you follow one of the options below and help make the most of the finite car parking space we have at QEC:

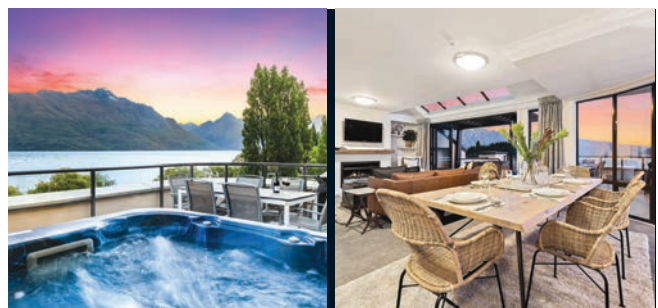
- > Allow more time for your journey and plan to arrive early



**Slow down once you
turn into the Events
Centre and always stop
at zebra crossings!**
There are kids everywhere
so please stay alert and
consider everyone's safety.

- > Consider carpooling or arranging drop-offs/pick-ups with friends and family
- > If you're on a bus route, why not take the \$2 Orbus to Frankton (BP) roundabout (challenging with young kids and sports gear, we know!).
- > Do not park in the bus zones along Joe O'Connell Drive or the small islands in between the pedestrian crossings that lead to and from the main entrance or you may get a ticket.
- > Remember that all parking on the roadside of SH6 through Frankton has been prohibited since last year. This includes the verges next to the sports fields at QEC.

Please share this info with your friends and teammates to help spread the word.



relaxaway

...in your Queenstown holiday home

Proactive property management – personalised service
Contact us for a complimentary appraisal of the holiday letting potential of your home.

T 03 442 7013 W www.relaxaway.co.nz E queenstown@relaxaway.co.nz





Alpine Aqualand Lap pool

ROOF FIX FOR ALPINE AQUALAND

Plans for a long-term solution to repair the roof above Alpine Aqualand, the swimming pool facility at Queenstown Events Centre, are well underway.

In November and December last year, contractors removed the ceiling tiles after a number had come loose posing a safety hazard to customers.

After a thorough investigation into the root cause – insufficient ventilation creating patches of ‘dead air’ – a recommendation to allocate \$2.3 million for tile replacement and ventilation improvements was being considered at the Full Council Meeting on 27 June.

QLDC Sport and Recreation Manager, Simon Battrick said pending budget approval there would be a minimum three-month lead time to procure key items for the repair from overseas.

“We have been working with specialist contractors since the ceiling tiles were removed and understand the scale of the project. The earliest work can begin is 30 September and we will have to close Alpine Aqualand for several weeks,” he said.

“Any pool closure is unfortunate and will obviously affect individuals, families, local clubs, schools and our own staff. But first and foremost we have to ensure our facilities are safe for all users which I am sure the community will agree has to be a priority. We are looking closely at how the work could be staged to minimise disruption to pool users and maximise the skills of our aquatics staff.”

“This is an opportunity to implement a long-term solution that will maintain Alpine Aqualand’s position as the pre-eminent aquatic facility in the Queenstown Lakes District for many years to come,” said Simon.

You can follow the project’s progress on QLDC Sport & Recreation’s dedicated Facebook page @QLDCsportrec.

BURN DRY, BREATHE EASY

A hot fire using dry wood will produce very little smoke.

If you see dirty smoke coming from your chimney, it's a sign your fire isn't burning efficiently or you're burning something toxic. Both result in releasing pollutants into the air we all breathe.

If your wood is dry you'll get more heat from each log warming your home faster. It also burns hotter meaning less pollution from your chimney, which is better for your health and our environment.

Tips to get the best from your fire

- > Store firewood stacked slightly off the ground, out of the rain, and with plenty of airflow (and sunshine if possible)
- > Have your flue swept once a year to improve air flow and help to prevent a chimney fire
- > Check your wood is dry and ready to burn
- > For more tips head to **www.orc.govt.nz/clean-heat**


Your household might be eligible for a subsidy to replace your old wood burner with a more environmentally friendly option.
Please visit www.orc.govt.nz/clean-heat for more information.



Wakatipu Gardeners Erin Schimanski, Kazumi Yamaguchi and Beth Herren with members of the Inner Wheel Group.

The group were at Queenstown Gardens in May to plant three Kate Sheppard camellias to celebrate the 125th Anniversary of Women's Suffrage in Aotearoa New Zealand, which was celebrated in September 2018.


QLDC supported this event by clearing a space in the gardens for the camellias as well as doing the planting on the day. We will also maintain the plants. A small rock from the gardens will form part of a new plaque, which will be installed at a later date.



KNOWLEDGE IS POWER

Use **our** knowledge before deciding on **your** next move

Call into Colliers International to collect your 2019-20 Otago Market Report, or visit colliers.co.nz



Otago Realty (NZ) Ltd, Licensed Agent REAA 2008

A BREATH OF FRESH AIR

QLDC IS
WORKING ON
SMOKEFREE
INITIATIVES TO
BE LAUNCHED
LATER IN THE
YEAR.

Thanks to all the local cafés who supported the Fresh Air Pilot to make their outdoor dining areas smokefree.

The pilot was run in partnership by the Cancer Society and Southern DHB and finished up in March this year.

Through the pilot, customers were surveyed and café operators interviewed about their experience. The results show significant support for smokefree environments, both from customers and café operators.

A snapshot of the results:

- > 94% of customers were in support of smokefree outdoor dining
 - o 67% said they were MORE likely to visit again
 - o 29% said it would make no difference
 - o 3% of people would be less likely to visit again
- > 100% of pilot venues stated that they would continue to have smokefree outdoor dining
- > There are now 45 venues throughout Otago and Southland



WATCH THIS SPACE: STAGE THREE OF THE DISTRICT PLAN REVIEW IS COMING

Over the last few months, we've been having early discussions with the community through a number of 'My Place' events about chapters in the third stage of the District Plan review process, as well as related strategies and plans - a climate action plan, homes strategy, and future development strategy.

These discussions have helped inform and shape the content of new district plan provisions and if Council gives the go-ahead at their August meeting, stage three of the district plan will be notified for submissions from 12 September – 11 November 2019.

Did you know?

Our district has the largest number of current Environment Court appeals in New Zealand? Our Planning Policy and Legal teams are currently responding to around 186 separate appeals to decisions on the proposed district plan that contain around 2,020 different appeals points.

The chapters within this stage will be:

- > Affordable housing
- > Sites of significance to iwi
- > Township zones
- > Industrial Zones and Ballantyne Road Mixed Use Zone
- > Rural Visitor Zones
- > Design Guidelines for Residential and Business Mixed Use Zones
- > Three Parks, Wanaka

To get the latest on Stage Three, or to find out more about the District Plan review, please head to:

**[www.qldc.govt.nz/
planning/district-plan/
district-plan-review-
proposed-district-plan](http://www.qldc.govt.nz/planning/district-plan/district-plan-review-proposed-district-plan)**

THE SLOW AND NOT SO FURIOUS THIS WINTER

Winter is here and that means potentially dicey roads and with any luck, plenty of snow on the hills.

It's during this time that getting from A to B can get a bit challenging. However, there's plenty you can do to keep yourself and others as safe as possible when you're out on the road.

First and foremost, if you don't have a set of chains for your vehicle, get a set and keep them in your boot at all times. You never know when you might need them, and you don't want to be at the top of the Crown Range without a set when heavy snow starts falling.

Another must before leaving the house is to check conditions. Sign up to our Winter Road Reports at www.qldc.govt.nz/winter-road-report and you'll get an email every morning with a heads up on what to look out for on the roads. Check MetService for the forecast, or NZTA's Journey Planner for any known road issues.

It's also important to understand the different risks on our roads during winter, the main one being *black ice*, so dangerous, you can't even see it. That's because patches of black ice can resemble a simple damp spot on the road, and exist even if your car suggests temperatures outside are above freezing. The sun might've risen, but that doesn't mean it's had enough time to warm the road where ice has formed.

So, if you suddenly encounter a spot of black ice, resist the urge to suddenly jam on the brakes. Take your foot off the accelerator and ride it out – you're likely to get traction again once beyond the patch of ice and continue on your merry way.

Beyond that, here are some general rules of thumb for safe winter driving:

- > Always accelerate smoothly and brake gently – don't put sudden force on the pedal and you'll go a long way to maintaining traction.
- > Don't rush. Plan for extra travel time and take it slow. The road ahead might not be icy, but grit can cause your vehicle to skid and slide. The faster you're going, the worse the effect.
- > Double your following distance, and don't overtake grit trucks!
- > Always scrape ice off your windscreen and car windows. If you don't have a scraper, use a card from your wallet.
- > Bridges, decks and shady spots are often far icier than other areas in the district.

Finally, take a moment to assess the risks before you travel. If you don't have to be somewhere, then don't drive there. And if you've got an important meeting to attend and conditions are horrible, consider an alternative way to attend – whether that's via Skype or in spirit.



Tell us if you want to save paper and read Scuttlebutt online.

We publish Scuttlebutt six times a year, deliver it locally through community newspapers, and post around 7,500 copies to ratepayers who live outside the district – that's a lot of paper!

You can help us reduce the number of copies we print by switching to our email distribution list.

Just email services@qldc.govt.nz with the word “**newsletter**” in the subject line, and be sure to include your name and postal address so we can cross you off the postal mailing list and send you a website link to Scuttlebutt instead.

You'll not only receive Scuttlebutt earlier, but also help QLDC trim the amount we spend on printing and postage to keep you informed – that's a win for everyone.

Every issue of Scuttlebutt is also on our website www.qldc.govt.nz

GOT AN ARTY IDEA OR PROJECT?

Some of your favourite things wouldn't exist if it wasn't for the arts. Your favourite TV show, song, or even logo started with someone who had a creative idea.

If you have an arty idea, we have funding options that might help you get it off the ground. We know that sometimes it's hard to know where to start with funding applications, but don't worry – we're here to help. Here are a couple of options to consider:

Creative Communities Scheme

If you would like to apply for funding through the Creative Communities Scheme, your project needs to achieve at least one of the following:

- > Encourage participation in local arts activities
- > Support diverse local artistic cultural traditions
- > Encourage young people to participate in the arts

How to apply:

Your project will need to meet certain funding criteria, which is available by heading to: www.qldc.govt.nz/funding-for-arts. There you'll find an application guide and form to complete.

This scheme has only two funding rounds per year, one closing on the last Friday of August and the other closing on the last Friday of February.

Central Lakes Art Support Scheme

This funding scheme is fondly known as CLASS. Through funding local arts projects, it aims to get more people involved in the arts and increase the range and diversity available to the local community.

How to apply:

For projects in **Queenstown, Arrowtown** and **Glenorchy**, please complete and return an application form to:

jan.maxwell@qldc.govt.nz

or post to Jan Maxwell

Relationship Manager Arts and Events
Queenstown Lakes District Council
Private Bag 50072, Queenstown.

Applications in these areas can be made at any time (up to a maximum of \$2,000 per group/project/event).

For projects in the **Wānaka** and **Upper Clutha** areas, please complete and return this application form to:

Upper Clutha Arts Council
PO Box 216, Wānaka 9343

The Upper Clutha Arts Council meets on the second Thursday of each month. Applications must be received by the 20th of the month prior.

Get a funding application form at
www.qldc.govt.nz/funding-for-arts

The Creative New Zealand website has a list of other funding options including crowd funding
www.creativenz.govt.nz/find-funding/other-sources-of-funding

If you have any questions about any of the arts funding options please contact Jan Maxwell
jan.maxwell@qldc.govt.nz

HIGHLIGHTS THIS YEAR

This year we have funded over 50 arts based projects in the district. Here are some of the highlights from our latest funding rounds:



BASIN'S GOT TALENT: As part of Arrowtown Autumn Festival, the Basin's Got Talent event showcased a number of incredibly talented school aged children from across the Wakatipu.

FOODIES' MARKET AT WĀNAKA RECREATION CENTRE

Since March, Wānaka Recreation Centre has been hosting a foodies' market in the corner of its car park every Wednesday from midday until 3.00pm.

The Wanaka Food & Produce market has proved very popular among Centre visitors, staff and locals making the short hop from the town centre to grab some lunch and do a weekly produce shop.

Seasonal veges, fruit, lunch and take home food, cheeses, fresh fish, honey and plants along with preserves and gourmet products are hitting the spot.

Market organiser, Adrienne Lamb is delighted with the response so far.

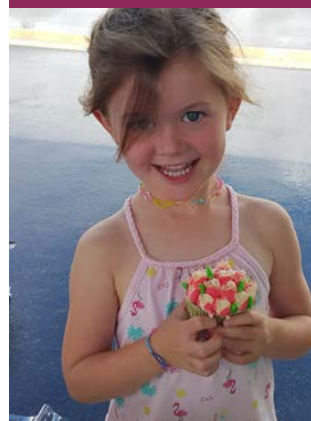
"Feedback from market goers has been really positive – locals are loving having a dedicated weekly market place to buy food and produce all year round. We are focused on growing the market sustainably and are pleased with the current variety of products on offer," she said.

"We're providing a great platform for stallholders to add this particular market to others they attend or start a new business which is really exciting."

There are a number of other local food and craft markets across the district – check out details at: www.qldc.govt.nz/markets



Stallholders come from Wanaka and across Central Otago every Wednesday



Chloe Jeffery (aged 4) enjoying a freshly-baked cupcake



Plenty of locally-grown veges on show

LUMA LIGHT FAIRIES: LUMA, held annually over Queen's Birthday weekend, delivers a spectacular sensory light experience over four nights at Queenstown Gardens. The LUMA Light Fairies were a popular addition back in 2018 – particularly with the children - and we were thrilled to help bring them back to LUMA 2019.



YAMI: YAMI is a weekend of music industry workshops, panels, and showcases for anyone aged from ten to 110 years. We loved supporting Lake Wanaka SounNZ to bring together people of all ages to immerse themselves in a weekend of music.

SIGN UP TO THE WINTER ROAD REPORTS

Winter has arrived and with it,
so too has QLDC's Winter
Road Reports.

If the concept sounds foreign to you, the Winter Road Report is an email our team sends out early every morning, detailing road conditions around the district and noting potential dangers on major routes.

It's completely free to sign up, so if you haven't already, do so now at www.qldc.govt.nz/winter-road-report

Whether we've got black ice warnings or heavy snow falling, specific roads closed or a heap of grit to watch out for up on the Crown Range, the Winter Road Report will help inform your commute or travels and keep you safe on the roads.

DISCLAIMER: Information contained within our road reports is based on the information we have at the time. Remember - conditions in this district can change very quickly. We do our best to keep you all updated but our roading crew can't be in every place at once, and we can't know the whereabouts of every single icy patch. Carry chains at all times during winter, know how to fit them, use common sense, take it slow and drive to the conditions.

UNTIL NEXT TIME

Scuttlebutt will be taking a break in the lead up to the local election in October 2019.

We'll be back in your mailboxes on 28 October. Until then, keep up with our latest news on Facebook or the website.

QLDC CONTACT LIST AND HOURS

QLDC & SERVICE CENTRES

Queenstown Office:
10 Gorge Road
Private Bag 50072, Queenstown
Phone: 03 441 0499

Wanaka Office:
47 Ardmore Street, Wanaka
Phone: 03 443 0024

E-mail: services@qldc.govt.nz
www.qldc.govt.nz

Office Hours:
Weekdays 8.00am–5.00pm

QUEENSTOWN EVENTS CENTRE

Arrowtown Athenaeum Hall
Queenstown Memorial Hall
Lake Hayes Pavilion
Lake Wanaka Centre
Alpine Aqualand
Sports fields
Phone: 03 450 9005

WANAKA RECREATION CENTRE

Wanaka Pool
Indoor Courts
Phone: 03 443 9334

TRANSFER STATIONS

Wakatipu: 110 Glenda Drive
Frankton Industrial Area
Phone: 03 451 0106
Upper Clutha: Cnr of Ballantyne
& Riverbank Roads
Phone: 03 443 6063

HARBOURMASTER

Phone: 027 434 5289
and 027 414 2270
Email:
harbourmasterqt@smsl.co.nz

LIBRARIES

For library opening hours
and locations please head to
codc-qldc.govt.nz

Scuttlebutt is published bi-monthly by
Queenstown Lakes District Council to inform
ratepayers and residents of council activities.

EDITOR: REBECCA PITTS

✉ rebecca.pitts@qldc.govt.nz
Feedback and ideas are welcome.

TO ADVERTISE CONTACT:

Sarah Douglas
✉ sarah.douglas@qldc.govt.nz