

Scuttlebutt

THE QUEENSTOWN LAKES DISTRICT COUNCIL NEWSLETTER // **DECEMBER 2017** // **ISSUE 123**



STAGE 2 OF THE DISTRICT PLAN IS OUT NOW.

We're proposing changes to visitor accommodation rules, how land in the Wakatipu Basin is used and much more. Your view counts so get informed and get involved. Read more on page 12.



INSIDE

02

MAYORAL
CHRISTMAS
MESSAGE

03

BE FIRE
SMART

14

SUMMER
BEACH
CLEANS

24

COUNCIL
HOLIDAY
SERVICES



The summer holidays are fast approaching and for me it's a great time to reflect on the past year.

There's a lot to be proud of this year and despite some big challenges, we are really building momentum on some key areas that are important to this district.

We've seen a lot of change recently, a new Government for one. We are working hard to make sure we can achieve a high level of buy-in from our new ministers. Our district plays a critical role in the national economy but we need to invest serious dollars into our infrastructure to meet the huge growth in visitor and resident demand. We need this Government's support.

Having said that, it's fair to say we are starting to win the war on congestion. Now that the \$2 bus has hit the streets, more and more of our people are choosing to jump on board. Yes there were a few teething problems, but I'd be more surprised if there weren't. I'm incredibly proud of this achievement and full credit to the team at Otago Regional Council, New Zealand Transport Agency and our own staff who got this milestone across the line.

Other projects that have made a significant difference include the recent opening of Hawthorne Drive and NZTA's improvements to the BP roundabout. Things are also looking a lot better out there now that the parked cars have been removed from State Highway 6. We're working hard on a collaborative relationship with NZTA to see the new two lane Kawarau Bridge almost complete, further widening of State Highway 6 and future improvements to the intersection at Quail Rise.

There's still a lot to do in this space and work will continue on tackling the congestion challenge.

Earlier in the year I formed the Mayoral Housing Affordability Taskforce to look at how we address the supply and affordability of housing in our district. The group released a report back in October that recommended six aspirational but practical solutions to our housing crises. I am thrilled that the Council adopted the report and I'm looking forward to seeing it come to fruition. A huge thank you to the members of the taskforce for the enormous effort and creative thinking that went into creating these solutions.

While we're on the subject of housing and planning, we're making good progress on our District Plan review. Stage 2 is out for public consultation now and decisions on Stage 1 are expected in March next year.

We hit the international media last month when we released some proposed changes to the way we manage residential visitor accommodation and we are expecting significant interest in the coming months. Not only that, together the team have processed a record number of building and resource consents, and made significant improvements to retain consent authority accreditation.

The Queenstown Town Centre Masterplan is almost complete and you'll see a number of large projects included in the next Ten Year Plan that will transform this area over time. I'm looking forward to seeing a similar project happen in Wanaka in the future.

Other highlights to share include making positive steps toward greater economic diversity in the district, some clarity around the old Wakatipu High School site, a resolution on what to do with the Lakeview site in Queenstown, the 150th anniversary of Queenstown Gardens, solid progress on a new pool in Wanaka and an outstanding first year at Wanaka Recreation Centre.

Finally, I'd like to thank all of the staff and elected members for their hard work and dedication to our community. We have a collaborative and positive Council working alongside a committed and engaged team. This is obviously filtering into the community, as reflected in our ratepayer survey which showed improved perceptions of our politicians and staff.

Christmas for me is about taking time out to spend with family and loved ones and enjoying the special things our district has on offer. I wish everyone a very Merry Christmas and I look forward to representing you all in the coming year.

Jim Boulton
Mayor

FIRE RESTRICTIONS NOW APPLY

Even though we're just at the start of summer, there's already a high risk of fire across the Wakatipu and Upper Clutha.

A **prohibited fire season** now applies across the district. This means if you've already got a fire permit, you'll need to reapply so that Fire Emergency NZ can reassess the conditions and whether it's safe.

Keep an eye on the Facebook page or www.otagoruralfire.org.nz for updates to the fire season status. If this hot, dry weather continues, it won't be long until a total fire ban is in place.

IT ONLY TAKES A SPARK. This means we all need to be careful when it comes to any work outside. Watch out for farm machinery, lawn mowers, scrub bars with steel blades, hot exhausts, or anything that could cause a spark and ultimately a fire.



FIRE DANGER



PARTNERS IN CRIME (PREVENTION)



We've joined forces with Life Pharmacy Wilkinsons to install a new CCTV camera in Queenstown Mall.

The camera is located on the corner of the long-standing pharmacy building, taking in views right down the busy mall. Monitored by NZ Police as part of the wider CCTV network, the additional crime prevention tool will go a long way to help keep our locals and visitors safe.

Huge thanks to Life Pharmacy Wilkinsons for their ongoing support to make this happen.



"Wise men talk because they have something to say; fools, because they have to say something" - Plato

For prudent, frank and upfront resource management advice come to

vivian+espie

vivian+espie

resource management and landscape planning (03) 441 4189 www.vivianespie.co.nz

WHAT DOES THE FUTURE HOLD FOR EELY POINT?

How would you like to see Wanaka's Eely Point recreational reserve develop in the years to come?

We're seeking public feedback on a draft report outlining future options for this much-loved recreational space.

This is the latest stage of QLDC's ongoing Wanaka Lakefront Reserves Management Plan first published in 2014. This set out a vision "to protect and enhance the amenity and ecological values of the Wanaka lakefront reserves whilst providing opportunities for both land and water based recreation".

Parks and Reserves Officer, Diana Manson said it was an important opportunity for the community.

"The reserve stretching from the Scout Den to Bremner Bay is enjoyed by a huge variety of locals and visitors. With activity peaking over summer this is the perfect time for people to think about how they currently use the reserve and how they'd like to see it develop as our population grows."

"There are currently no restrictions on vehicle access within the reserve so this is one area we'd like to explore with people along with questions around the potential for further building, replanting and options for funding facilities like playgrounds, public art, fitness trails and parking," Diana said.

Have your say at
www.qldc.govt.nz/eely-point
by **Friday 19 January**.

**HAVE
YOUR
SAY**

NEW KAWARAU FALLS BRIDGE OPEN TO TWO- WAY TRAFFIC FOR CHRISTMAS

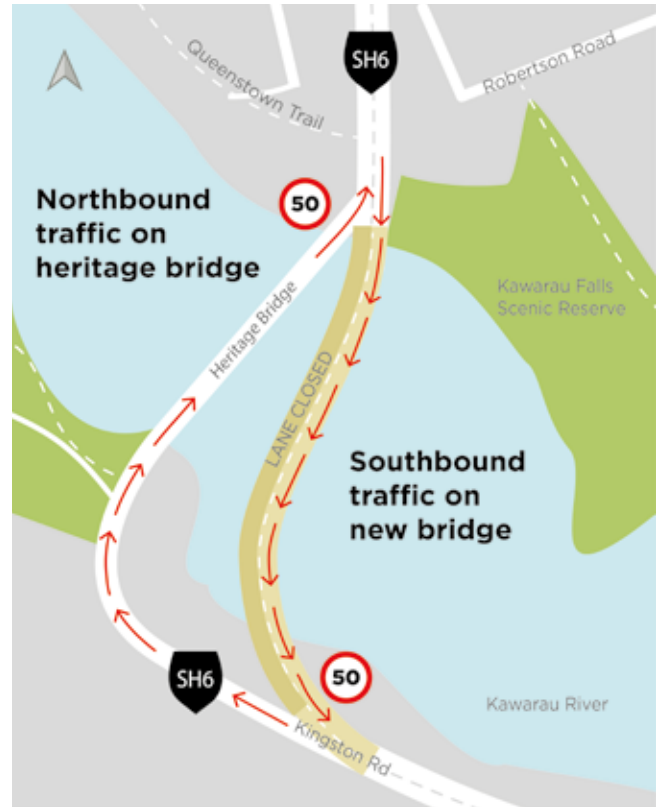
Relief is in sight for Kawarau Falls traffic during the busy Christmas and New Year Period.

Two-way traffic will be flowing from 17 December (afternoon) using the existing heritage bridge and the southbound lane of the new bridge.

The temporary two lane arrangement end on 8 January 2018. Following that, the southbound lane of the new bridge will carry all highway traffic which will be controlled by traffic signals.

At the same time, a start will be made on converting the heritage bridge into a walking and cycling route. When complete it will become an exciting addition to the Queenstown Trail network.

The new bridge will officially open to two-way traffic in early April.



Two-way traffic will be flowing on the Kawarau Falls Bridge in time for Christmas.

KEEN TO TAKE A WALK ON THE BRIDGE BEFORE IT OPENS TO TRAFFIC?

*Come along on Sunday
17 December, 10.00am
and check out the work
before it opens to traffic
later that day.*



**When it comes to property management,
we go the extra mile...**

WE OFFER:

- Winners of the NZ Customer Service Excellence Award 2017 to work with you and your tenants
- The NZ Property Manager Rising Star of the Year 2017 to manage your home
- Owner Service Guarantee: **FREE**
- No stress, friendly smiles, and great communication: **FREE**

If you need a rental appraisal, have property to lease, or are looking to move, pop in and talk to our team - we will be able to help you.

VISIT US AT:
Alta House, Terrace Junction, Frankton
Phone: 03 442 3815 www.housemart.co.nz

HOUSE MART
HOW SMART

QUEENSTOWN'S NEW BUS SERVICE PROVING POPULAR



The Wakatipu's brand new \$2 bus service, Orbus is already proving popular with locals and visitors.

The game-changing new bus service was launched on 20 November offering flat-rate fares to anywhere in the network for just \$2 with a GoCard.

As well as being an affordable alternative to driving, Orbus aims to reduce traffic congestion on Queenstown's road network and reduce the impact that private transport has on the environment.

Get a GoCard!

GoCards can be purchased for \$5 from the O'Connell's Mall kiosk, Queenstown Airport or on any Orbus bus. **You need a GoCard to receive the subsidised \$2 fare.**

Timetable info

Full timetable and route information can be viewed on the Otago Regional Council website at www.orc.govt.nz/orbusQT and additional information is available via the Orbus Facebook page.

Real time bus info

Get the location of your nearest bus stop and track bus movements in real time via the Transport Agency's free Choice app www.nzta.govt.nz/choice



Orbus was launched at a community event on the Village Green in central Queenstown.



PARKING FEES TO RISE IN QUEENSTOWN'S CBD

Parking charges in the Queenstown CBD have increased for the first time in seven years.

While this might be considered by some an unpopular move, the increases will help subsidise our new bus service and make people stop and think before bringing their private car into town.

From 5 December, parking fees across the CBD doubled, applying to hourly, daily and weekly rates in all Council-owned carparks.

Then from 31 March 2018 further changes will be applied, including a maximum 10-hour stay for most carparks

(removing the option for daily or weekly rates). Free all-day parking in areas like the Queenstown Gardens and One Mile car parks will also be removed and parking will be prohibited on road verges.

We acknowledge that some people simply need to drive. These people should find it easier to get a park in town thanks to the increased use of public transport.

Get a full schedule of the changes at www.qldc.govt.nz/cbd-parking-changes

CAMPING CHANGES AT LAKE HAYES

Changes are underway at the northern end of Lake Hayes to strike a better balance between local lake users and visiting campers.

A gate and fencing will soon be installed and signposted indicating where self-contained campers can stay overnight. This will stop campers spreading out across the reserve, allowing better access for local lake users.

This gate will be open during the day so all beach users can park up close to the main beach, but it will be locked at night. Any vehicles left parked in the restricted area after the gate is shut will be issued a fine under the current rules for this reserve.

This is all part of ensuring our reserves are great places for everyone to use. If you have any questions please get in touch with us at services@qldc.govt.nz, subject line 'Lake Hayes Camping'.



Fuel up in Arrowtown

Enjoy 7 day access to fuel at Arrowtown's new self-service pump

RD Petroleum's self-service station is open to the public seven days a week until late.



25 Wiltshire Street, Arrowtown | 0800 44 00 14 | www.rdp.co.nz



FLICKING THE SWITCH ON ELECTRIC VEHICLE CHARGING

State-of-the-art, electric vehicle charging stations will soon be available in Queenstown and Wanaka.

Wanaka is first off the ranks, with the Ardmore Street site expected to be ready before Christmas. Queenstown won't be far behind, with approval given for a fast-charging station to be installed on Athol Street early next year.

This technology is being installed by ChargeNet Ltd who are working with BMW and the Government to help roll out electric charging facilities across the South Island.

Fast-charging stations are able to charge electric vehicles in 20-40 minutes, meaning drivers can park in town, have a coffee or get their shopping done and be on their way with a fully charged battery. Currently the only charging option in the district is a slow charge using a domestic 240v supply, which takes 4-10 hours.



OUR YOUNG INFLUENCERS

New recycling bins and a water fountain will soon be installed at Arrowtown Skatepark, thanks to a gentle nudge from Arrowtown School students.

Back in October, year five and six students wrote to Mayor Jim Boulton telling him about some environmental changes needed in the area.

The Mayor was so impressed by the proactive approach that the Council is taking the suggestions on board and making it happen.

Equally impressed by the students, our water services contractor Veolia is coming to the party and providing the new water fountain free of charge.

Arrowtown School students met with Mayor Jim Boulton to talk through their ideas. From left: Ollie Spice, Harry Waggett, Mayor Jim Boulton, Mace Korani, Ashton White and Lennox Fa'amalepe.



HAWTHORNE DRIVE ALMOST FINISHED!

Christmas is coming early for Queenstown drivers with the official opening of Hawthorne Drive on 21 December.

Stage one of Hawthorne Drive was opened earlier this year to improve traffic flows and congestion issues over the busy ski season. This saw an immediate improvement to drive times between the BP Roundabout and Queenstown Airport, with peak travel times reducing from 10-20 minutes down to three minutes, a time saving of between 7-17 minutes for this stretch of road.

Stage two will see Hawthorne Drive traffic rerouted away from Glenda Drive, taking a newly formed road around the back of Pak 'n Save and connecting with the section of Hawthorne Drive that is already in use.

Mayor Boulton is delighted about the effect this has already had on Queenstown's traffic issues. "This roading link has been a long time in the making and it's fantastic to see it making such a difference to motorists. This is a step in the right direction and shows the impact right-sizing our infrastructure can have on day-to-day life in Queenstown."

"Combined with the new \$2 bus and the opening of the new Kawarau Falls Bridge to two-way traffic this month, we should see considerable improvements to Queenstown's traffic issues."

"While there is still a great deal ahead of us, the momentum is beginning to shift in our favour. It's certainly an exciting time for the Queenstown Lakes District."



THE CONSTRUCTION OF HAWTHORNE DRIVE HAS BEEN A BIG PROJECT WITH A MASSIVE AMOUNT OF WORK ACHIEVED IN UNDER A YEAR:



95,000 MAN HOURS WORKED



35,000 M³ OF EARTHWORKS MOVED



9,000 METRES OF PIPES



1,600 CUBIC METRES OF CONCRETE PLACED



**42,000 TONNES OF PAVEMENT
AGGREGATE TRUCKED IN AND PLACED**



**21,000 SQUARE METRES OF ASPHALT LAID
(OR 3,000 TONNES OF ASPHALT)**

HOME&CO.

PROPERTY MANAGEMENT

Nobody knows the local Wanaka market better!

BUILDING OR BUYING A RENTAL PROPERTY?

Colleen Topping and team

NZ Property Manager of the Year 2013 & 2010 REINZ

13+ years local property management experience

Independent property management company

Free, No-obligation rent appraisals



021 225 RENT (021 225 7368)
rent@homeandco.co.nz • www.homeandco.co.nz

BRING IN 2018 WITH A BANG!

Thousands of people are drawn to our New Year's Eve parties on the waterfront every year. And who can blame them. Featuring live entertainment, a family-friendly atmosphere and spectacular fireworks to welcome in 2018 – it's a line-up not to be missed.

**Head down to the waterfront and enjoy the vibe.
Here's what's in store:**

QUEENSTOWN

Live music on two stages.

From 7.30pm until 1.00am on the main stage at Earnslaw Park, featuring Murphy's Law, The Hamiltones, RED Trio and guests, The Flavour.

Live DJs from 9.00pm until 1.00am at Memorial Arch.

Food stalls.

Fireworks at midnight.

WANAKA

Live music from 8.00pm until 1.00am, featuring the Mount Aspiring College Band, Devine and Killer Seas.

Food stalls.

Fireworks at midnight.

**DRINK
RESPONSIBLY
AND LEAVE THE
CAR AT HOME!**

**IF YOU'RE IN
QUEENSTOWN
TAKE THE
\$2 BUS!**



NEW YEAR ALCOHOL BAN

A 24-hour alcohol ban will be in place in Queenstown, Frankton, Arrowtown, Wanaka and Hawea from **27 December until 6 January 2018.**

Drinking isn't allowed in public places during this time, but alcohol can still be bought and consumed in licensed premises.

If you're caught drinking in any alcohol ban area, you may be fined \$250. That's one expensive drink!



FREE ENTRY TO U19 CRICKET WORLD CUP

Queenstown is all set for the return of international cricket this summer as one of four host venues for the International Cricket Council (ICC) Under-19 Cricket World Cup.

The John Davies Oval at Queenstown Events Centre will feature nine matches during the tournament which is being staged throughout New Zealand from 13 January until 3 February.

Entry is free to watch all matches which include England's four group games against Namibia, Bangladesh and Canada starting on 15 January. The top two sides from each group advance to a Super League with six of these matches, including two quarter finals on 23 and 26 January, also played in Queenstown.

Queenstown Lakes District Council Sport & Recreation Manager Simon Battrick said he cannot think of a better place to watch the future stars of world cricket.

"There are few grounds around the world with a backdrop as stunning as the Remarkables. We've invested \$640,000 bringing the oval back up to international standard and it's looking in great condition. Add some sunshine, a celebration of different cultures and the chance to see tomorrow's stars today and it's shaping up to be an exciting summer in Queenstown."



FREE ENTRY


ICC UNDER-19
CRICKET WORLD CUP
NEW ZEALAND 2018

JOHN DAVIES OVAL, QUEENSTOWN
GATES OPEN 9.30AM / MATCHES START AT 10.30AM

MON 15 JAN	ENGLAND V NAMIBIA
THU 18 JAN	BANGLADESH V ENGLAND
SAT 20 JAN	ENGLAND V CANADA
TUE 23 JAN	SUPER LEAGUE QUARTER-FINAL 1
FRI 26 JAN	SUPER LEAGUE QUARTER-FINAL 4
SUN 28 JAN	SUPER LEAGUE PLAYOFF SEMI-FINAL 2
TUE 30 JAN	7TH PLACE PLAYOFF
WED 31 JAN	5TH PLACE PLAYOFF
THU 01 FEB	3RD PLACE PLAYOFF

To view the full match schedule visit
icc-cricket.com/u19-world-cup/fixtures

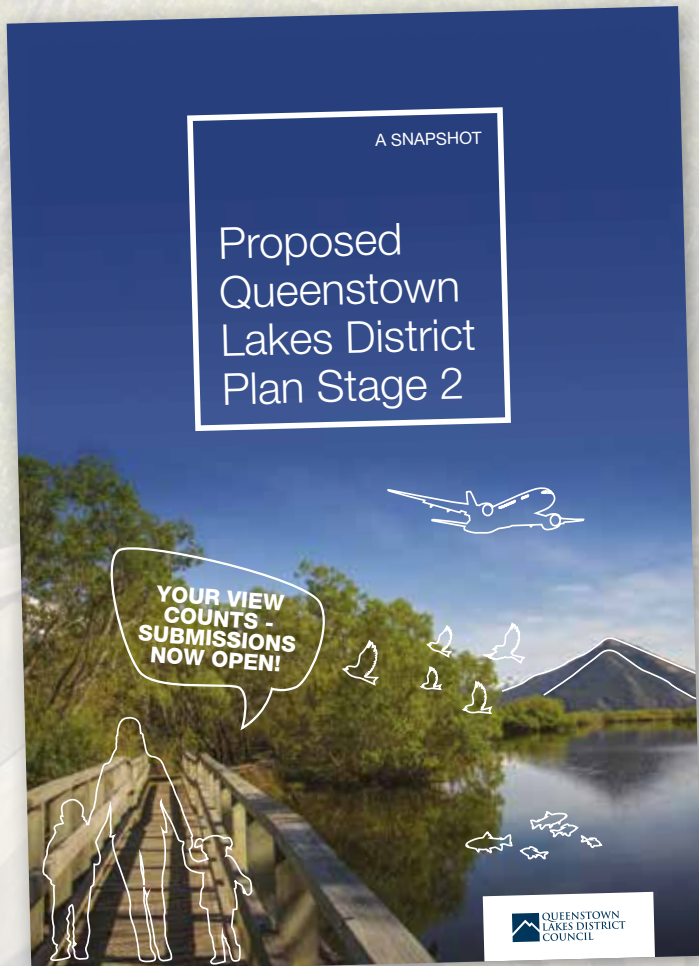
#U19CWC

DISTRICT PLAN OUT NOW

The Queenstown Lakes Proposed District Plan (stage 2) is out for public consultation.

If you're a ratepayer, by now you should have received a letter in the post informing you of what's being proposed. If you didn't receive a letter, the same information and much more can be found at www.qldc.govt.nz/proposed-district-plan

Stage 2 is made up of six topics: Visitor Accommodation, Transport, Earthworks, Signage, Wakatipu Basin Land Use, and Open Space and Recreation. A high level overview is provided here but if you want to know more, head to the website and get informed.



VISITOR ACCOMMODATION

Visitor accommodation has been the hot topic so far, sparking international media coverage and huge local interest. The proposed rules are simpler, easier to enforce and aim to better balance the positive and negative effects of visitor accommodation happening in residential areas. They also reflect the desires of a significant portion of our community who don't want their neighbourhood becoming a commercial accommodation operation. We need to make sure our own people are housed, and that commercial visitor accommodation is available in the most appropriate locations.

Read the Visitor Accommodation Fact Sheet online for an overview of the changes being proposed and how they might affect you.

WAKATIPU LAND USE VARIATION

A new zone has been created to better recognise the special character of the Wakatipu Basin and aims to restrict rural subdivision and development.

The proposed Wakatipu Basin Rural Amenity Zone and Lifestyle Precinct will replace the existing Rural, Rural Residential and Rural Lifestyle Zones in the Wakatipu Basin. The new rules are proposed as a result of the Wakatipu Basin Land Use Planning Study, which was completed in March this year. This followed a recommendation by the Stage 1 Hearings Panel that without careful assessment, further development within the Wakatipu Basin could cause irreversible damage to the special character of the area.

Read the Wakatipu Land Use Fact Sheet online for an overview of the changes being proposed and how they might affect you.

SIGNAGE

Signs have an important role to play, providing information to residents and visitors for a variety of purposes. But they can have negative effects on visual amenity and traffic and pedestrian safety. New rules are proposed to help maintain a quality environment for everyone.

Read the Signage Fact Sheet online for an overview of the changes being proposed and how they might affect you.

EARTHWORKS

Many types of land use or development require earthworks. Earthworks can create dust and noise, and if not managed properly can cause soil erosion resulting in sediment entering our waterways. The changes proposed in the Earthworks chapter aim to minimise any negative effects on our landscapes by requiring resource consent for larger scale earthworks to better manage erosion and sediment management.

Read the Earthworks Fact Sheet online for an overview of the changes being proposed and how they might affect you.

TRANSPORT

Every day we all make choices on how to get around. The Transport chapter aims to ensure our transport network operates safely and efficiently, while allowing for continued growth expected in the district. The proposed rules support future initiatives to encourage cycling, walking and public transport and guide the way developments, subdivisions, roads and off-road trails are designed to ensure the safety and efficiency of the transport network.

Read the Earthworks Fact Sheet online for an overview of the changes being proposed and how they might affect you.

OPEN SPACE AND RECREATION

Open Space and Recreation Zones are a new addition to the Proposed District Plan, helping us to better manage our parks and reserves and the activities that happen within them. There are five new zones proposed: Nature Conservation, Informal Recreation, Active Sports and Recreation, Civic Spaces and Community Purpose. Each of these zones will include targeted rules to ensure these areas are protected and used most appropriately.

Read the Open Space Fact Sheet online for an overview of the changes being proposed and how they might affect you.

HAVE YOUR SAY!

Whether you love or hate the proposals, the important thing is that you make a submission. The Council can't take your views into account if you only share them over the dinner table. Head to www.qldc.govt.nz/proposed-district-plan to have your say.

Submissions close on 23 February 2018.

**GET INFORMED!
READ FACT SHEETS
ON EVERY CHAPTER AT
WWW.QLDC.GOV.T.NZ/
PROPOSED-DISTRICT-PLAN**

The District Plan sets the rules for managing land use and development in our district. It determines the things you can do as of right, and what you need resource consent for.

HELP CLEAN-UP OUR SHORES!

Do your bit for the environment this summer and take part in a community-run beach clean.

The clean-ups are run by Sea Shepherd and will happen once a month in Queenstown and Wanaka. At every event you'll also be able to check out environmental displays and information about the various campaigns underway to protect, defend and conserve our oceans.

One of the organisers Carolynne McFarland says beach cleans enable the community to get involved in conservation and to feel part of making a difference to their environment.

"No matter how small the litter is, it all goes into the lake, then the river and then ultimately the ocean where sea creatures and birds mistake these items for food. The damage this can do is life threatening to them which means the lake beach cleans are just as important as coastal cleans."

"Often people want to do something to make changes and make a difference, but don't know where to turn. By making this a public event, people see others doing good, and it hopefully makes others want to follow!"

A huge thank you to all of those involved in this effort to keep our lakefront areas clean.



WANAKA BEACH CLEANS

Please meet at 10.00am near the dinosaur park by the big hand sculpture.

7 Jan, 11 Feb, 11 March, 1 April, 13 May, 8 July.

QUEENSTOWN BEACH CLEANS

Please meet at 10.00am at Memorial Arch on Marine Parade.

17 Dec, 14 Jan, 18 Feb, 18 Mar, 22 Apr, 27 May, 1 July.

BAN THE BUTTS

The biggest culprit is cigarette butts which take over ten years to decompose. People do not realise this and think nothing of throwing their butts on the ground.

Typically on a beach clean we will gather hundreds of butts! Along with plastic straws, bottle tops, broken glass and tiny pieces of plastic. These can take more than 100 years to decompose.



RECLAIMING OUR STREETS!

New temporary street-art has been installed on Beach Street, breathing a bit of life into the recently pedestrianised street.

The theme for the project is 'reclaiming our streets', severing the tie with cars and promoting the area as a place for people. A new entrance graphic welcomes pedestrians into the space and the quirky new 'zebra crossing' adds a bit of humour and is sure to provoke interest. There are more artworks planned in future so next time you're in Queenstown town centre, go for a wander to Beach Street and take a look.

The Council is proposing to fully upgrade Beach Street next year. This will be consulted on in March 2018 as part of the Ten Year Plan.



**VOLUNTEER FOR THE SUMMER
PUBLIC LIFE SURVEY, HAPPENING
IN JANUARY. FULL DETAILS
AT WWW.QLDC.GOV.TZ/
QUEENSTOWN-TOWN-CENTRE**

EARTHQUAKE- PRONE BUILDINGS



New legislation has been introduced to ensure earthquake-prone buildings are managed consistently across the country.

Over the next 12-24 months, our Building Services team will be assessing buildings district-wide. If you own a building that is considered potentially earthquake prone, you'll be required to provide a seismic assessment of the building, which will provide the Council with the information it needs to make a decision.

If your building is confirmed as earthquake prone, you'll have 15 years (or 7.5 years if a priority building) to strengthen or demolish it. You'll also need to put up a notice on your building so that people know before entering that it is earthquake prone.

There's a lot more information about this at www.qldc.govt.nz/earthquake-prone-buildings or email our Building Services Manager **Chris English**, chris.english@qldc.govt.nz



**ARROWTOWN
POOL**

Join us for family fun, all summer long!

**OPEN DAILY
TILL 3 MARCH
11AM-6PM**

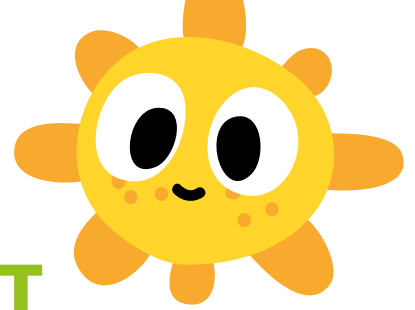
Child \$1.50 Adult \$3
Seniors \$2
Full season passes available

Separate toddler pool, snack shop & picnic area

Arrowtown Memorial Pool
QUEENSTOWN LAKES DISTRICT COUNCIL

Cnr Wiltshire & Hertford Street, beside the Fire Station
P 03 442 0145 | E swim@qldc.govt.nz | W sportrec.qldc.govt.nz

Image credit: Karen Reid



BUSY SUMMER IN STORE AT WANAKA RECREATION CENTRE

A blistering spring has seen activity hotting up at Wanaka Recreation Centre (WRC) with new sports programmes and activity days as well as the Wanaka Pool complex taking shape next door.

A junior futsal league for Years 3-8 in Term 4 has proved hugely popular. Ten mixed teams signed up for the Friday afternoon sessions in the indoor stadium, reflecting the current boom in junior football.

Wanaka Basketball Club had up to 100 kids a week at its Thursday after-school sessions. Chair Duncan Good said this was the first year the club has held its Stonewood Junior League for both Years 3-4 and 5-6 at the Rec Centre.

"We've had some very positive feedback this term. The Council's new temporary nets mean both age groups can play under one roof at the same time which makes things much easier to organise."

The new year will see the start of another new activity – walking netball. Aimed mainly at those looking to continue or return to gentle exercise, it's based on the official game but different rules mean it's far more accessible to all sorts of people.

WRC Team Leader, Penny Batchelor said the sport is designed to be very social.

"I know from our trial sessions in November that there are heaps of people around Wanaka who might have given up on the sport or are looking for fun new ways to keep active. Walking netball is by definition slower with less impact and you don't need a team or any previous experience – just turn up and you'll play," she said.

The sport was a feature of WRC's inaugural grandparents and grandkids day back in October which attracted more than 60 people. Other activities that the young and 'young at heart' enjoyed together included table tennis and badminton. There'll be another session next year by popular demand – watch this space!

WANAKA RECREATION CENTRE IS NOW OPERATING SUMMER OPENING HOURS (CHECK THE BACK PAGE FOR CHRISTMAS AND NEW YEAR OPENING HOURS)

> **MONDAY-FRIDAY 9.00AM-8.00PM**

> **SATURDAY-SUNDAY 9.00AM-5.00PM**

(GROUP BOOKINGS MAY TAKE PLACE OUTSIDE THESE HOURS).

For bookings and more info call **03 443 9334** or email **wrc@qldc.govt.nz**



All ages at Wanaka Recreation Centre's first grandparents and grandkids in October (credit – Wanaka Sun).



STAY SAFE ON THE WATER THIS SUMMER

Summer is well and truly here and the warmer weather combined with the influx of visitors for the holiday season means there will be a lot more people out and about enjoying our rivers and lakes.

Before you head out, make sure you know the rules, no matter what kind of boat you use. Staying safe on the water means you'll have much more fun, and it also means you'll avoid expensive fines for putting yourself and others at risk.

WEAR YOUR LIFEJACKET. Wearing your lifejacket is the single most important thing you can do to avoid drowning if you end up unexpectedly in the water.

COMMUNICATIONS. Carry two kinds that will work when wet. If you can't call for help then no one can rescue you.

SAFE SPEED. There is a five knot speed limit near the shore, swimmers, divers and other boats. Speeding in congested areas is dangerous and can cause injuries to children, swimmers, divers and people in small craft.

REMEMBER – NOBODY IS FASTER THAN DISASTER!

BOAT RAMP FEES

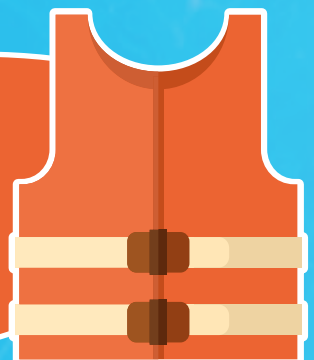
If you're a regular user of the district's boat ramps you can buy an annual permit for \$50 instead of paying the daily fee each time you take the boat out – more details at www.qldc.govt.nz/boat-ramp-fees

BOAT CHECK DAYS

The harbourmaster will be running free boat safety checks at local boat ramps over summer. Drop in with your boat to get it looked over by the experts. Marty Black and his team will let you know if you're missing anything and be on hand to offer tips and advice to keep you and your family safe on the water. Keep an eye on our Facebook page for more details.



IN THIS DISTRICT IT IS
COMPULSORY TO WEAR A
LIFE JACKET AT ALL TIMES
IN ANY BOAT UNDER 6 METRES



QUEENSTOWN TOWN CENTRE – MASTERPLAN UPDATE

A range of projects to transform the Queenstown town centre will be included in the upcoming 2018-28 Ten Year Plan.

As you read this, the Council would have just considered indicative business cases for the Arterial Road, Public and Passenger Transport, Project Connect and the overall Masterplan.

This is the background work, helping us to understand the gaps, gather evidence, analyse data and clearly show that we're choosing the right projects to achieve the community's goals for the town centre.

You can read the business cases at www.qldc.govt.nz/queenstown-town-centre and look out for more detail on the projects when we release the draft Ten Year Plan next March.

TEN YEAR PLAN – WHAT'S THE DEAL?

We've been talking about the Ten Year Plan a lot lately, and you're about to hear a whole lot more as we head into the formal consultation phase next March.

In the meantime, if you're wondering what exactly a Ten Year Plan is and why it's important, here's the lowdown.

THE TEN YEAR PLAN:

- > Is prepared every three years
- > Covers all the things a Council does and how it all fits together
- > Outlines the vision for the future and how we plan to achieve it
- > Highlights the key projects the Council will deliver over the ten year period, how much they will cost and how that translates into the rates you pay.

We're building momentum on some great initiatives. But this is your plan, for the future of your district, so make sure you take part in the process next March.

**SAVE THE DATE!
TUESDAY
6 FEBRUARY
2018**

We're planning **Waitangi Day events** in Queenstown and Wanaka.

Mark your calendar and come along to celebrate our diverse communities.

Keep an eye on our Facebook page for event details.



TRUST POWER COMMUNITY AWARDS

Recently the work of our communities' unsung heroes was celebrated at the local Trust Power Community Awards.

Voluntary groups from around the region gathered with representatives from QLDC, Trustpower and the local community at Arrowtown Athenaeum Hall to hear how 13 groups are making an impact in our communities.

Huge congratulations to the LUMA Light Festival Charitable Trust who took out the top honours on the night for their monumental efforts in organising the annual LUMA festival - a fully sustainable, fully accessible, family-friendly public arts event.

The team from LUMA will go on to represent the Queenstown Lakes District at the 2017 Trustpower National Community Awards, taking place right here in Queenstown between 13-15 April 2018.

The national Trustpower Community Awards is an extraordinary opportunity to celebrate just how much volunteers mean to our communities and our country. It's also a chance for everyone to come together share ideas, experiences, contacts and be inspired by one another. There will be representatives from community groups/organisations from 25 different regions around



Pictured here, our local Trustpower Community Awards with Mayor Jim Boulton and Mayoress Karen Boulton.

New Zealand, representing five different categories: Heritage and Environment, Health and Wellbeing, Arts and Culture, Sport and Leisure and Education and Child/Youth Development.

Members of the public are welcome and encouraged to come along to Queenstown Memorial Centre to hear the groups' presentations on Saturday 14 April 2018 from 8.30am. Keep an eye out for free tickets on Eventfinda to secure your spot.

Well done to the other winners at the Trustpower Queenstown Lakes District Community Awards:

YOUTH COMMUNITY SPIRIT

Winner
Danique Ehmann
(Wakatipu High School)

Runner-up
Ashleigh Cram
(Mount Aspiring College)

HERITAGE AND ENVIRONMENT

Winner
Te Kākano Aotearoa Trust

Runner-up
Queenstown Climbing Club

Commendation
Wakatipu Heritage Trust

HEALTH AND WELLBEING

Winner
Baskets of Blessing

Runner-up
Food For Love Wanaka

Commendation
Arrowtown Fire Brigade

ARTS AND CULTURE

Winner
Festival of Colour

SPORT AND LEISURE

Winner
Wanaka Trail Ride

Runner-up
Queenstown Cricket Club

EDUCATION AND CHILD/ YOUTH DEVELOPMENT

Winner
Mount Aspiring College
Students in the Community

Runner-up
Wakatipu Youth Trust

Commendation
Kahu Youth Trust

SUMMER AT THE QUEENSTOWN LAKES DISTRICT LIBRARIES

School might be out, but the Queenstown Lakes District Libraries are open all summer!

Don't let your reading slide over summer, embrace the lazy summer days to feed your love of literature and keep up your good reading habits.

Our regular library events won't be running over the summer holiday period but library services will run as normal (see the full list of opening hours at the back of Scuttlebutt).

Remember as a library member you have full use of the online eResources such as Pressreader and Beamafilm as well as round the clock access to the ever growing range of e-Books and e-Audiobooks.

WHAT'S HAPPENING IN DECEMBER AND JANUARY AT THE LIBRARIES?



Summer Reading Challenge: 18 December - 29 January

Celebrate all things Kiwi this summer! The children's Summer Reading Challenge kicks off on 18 December, so swing by your local library to pick up your booklet, and get reading. There are plenty of activities inspired by "Kiwi Summer Holiday" to keep you busy throughout the holidays.

Letters to Santa: Throughout December

Send Santa a letter this Christmas! Find the special post box at your local library, and post your notes to the North Pole – all mail is sent by the Library Reindeer Express.

Food for fines: 20 November – 31 December

Library fines will be waived in exchange for non-perishable goods (\$5 per item) until the end of 2017. Donations are being given to Happiness House and Community Networks.

Santa's visit to Arrowtown Library: Saturday 16 December 11.00am

Santa's visit to Queenstown Library: Monday 18 December 10.30am

**REMEMBER TO FOLLOW THE QLDC LIBRARIES
FACEBOOK PAGE: [FACEBOOK.COM/QLLAKESLIBRARIES](https://www.facebook.com/QLDLakesLibraries)
OR VISIT OUR WEBSITE CODC-QLDC.GOV.TZ TO FIND
OUT MORE ABOUT OUR EVENTS AND ACTIVITIES.**

NEW RULES FOR POOL OWNERS

Last year the Government introduced new legislation which makes some changes to the rules for pool owners.

The Building (Pools) Amendment Act 2016, which replaced the Fencing of Swimming Pools Act, came into force on 1 January 2017. Changes include:

- > Every pool must be registered with Council and inspected by either a Council Inspector or a qualified independent pool inspector every three years to ensure it complies with the Act.

IF YOU HAVE A POOL AND HAVE NOT BEEN CONTACTED BY COUNCIL

PLEASE HEAD TO

WWW.QLDC.GOV.TZ/SWIMMING-POOLS

- COMPLETE THE REGISTRATION FORM AND EMAIL
IT TO **SWIMMINGPOOLS@QLDC.GOV.TZ**

Particular areas of focus are fencing and restricting access for vulnerable people, especially young children.

- > Spa pools which have lockable covers, are more than 760mm out of the ground, have less than or equal to 5m² water surface area and have appropriate signage are exempt from the legislation
- > The new legislation gives Council the ability to issue Notices to Fix and Infringements if pool owners fail to comply with the requirements of the Act.

SAVE WATER, AVOID RESTRICTIONS

Unless the water in your home comes from a rainwater tank or your own bore, you will be connected to a community water source. Almost all of these are provided by the Council and you're paying for it through your rates.

Naturally over summer, demand soars as people water their lawns and gardens or wash their boats. Consequently this means some of our communities often face water restrictions when the demand is greater than our system can supply. Please bear this in mind when you're using water over the summer – conserve as much as possible and avoid the potential for restrictions.

DID YOU KNOW?

- > A sprinkler can use up to 1,300 litres an hour, so even one or two people in each street watering their lawns for a few hours a day has a huge impact on water use.
- > One drip per second from a leaking tap can add up to around 28 litres a day - which adds up to 2,500 litres every three months, enough to fill a skip!
- > A running hose delivers about 10-15 litres per minute, so even a few minutes of unnecessary hose use - or leaving it running into the gutter - can waste a lot of water.

IT'S EASY TO USE LESS WATER

- > Water your garden by hand rather than setting a sprinkler.
- > Visit a hardware store and buy a simple timer for your sprinkler. Water your lawn for an hour between midnight and 6am, when demand on the water supply is low.
- > Check the arc of your sprinkler and make sure you're watering the garden or lawn, not the path and driveway
- > Wash dishes and clothes when you have a full load to run your washing machine or dishwasher.
- > Take shorter showers, shaving a minute from your daily shower can save up to 18 litres. Most mains-pressure showers use 9 to 18 litres of water every minute, so more than five minutes in the shower could be using more water than you'd need for a bath.
- > Check for and fix leaks. A leaking toilet may not be obvious, but it can waste thousands of litres of water in a year.

**ALL COUNCIL WATER SUPPLIES WILL
BE CHLORINATED BEFORE CHRISTMAS
TO ENSURE THEY ARE SAFE TO DRINK
FOR OUR RESIDENTS AND VISITORS.
FOR MORE INFORMATION PLEASE VISIT
WWW.QLDC.GOVT.NZ/CHLORINATION**



*Photo supplied by
Pedro Pimentel*

FLASH MOB CARRIES YOUTH MESSAGES

The Wanaka Alcohol Group (WAG) launched their four-minute film 'BU Dance' (be you) last month, promoting valuable youth messages in an interactive way.

The initiative was developed in partnership with local individuals and organisations including QLDC, with the aim to reduce alcohol related harm in the wider community.

The creative piece was performed at the Upper Clutha Sport Community's 'Festival of Sport and Recreation' at Wanaka Recreation Centre in September, designed in partnership with Dance Out Loud School of Dance and captured on nine cameras by Pedro Pimentel. It is entertaining, energised and promotes the important youth messages of:

- >> **STAY CONNECTED**
- >> **BACK EACH OTHER**
- >> **BE YOU**
- >> **PUT A LID ON ALCOHOL**
- >> **MAKE GOOD CHOICES**
- >> **BE HIGH ON LIFE**

The BU Dance initiative addressed recommendations from the 'Harming You Harming Me' research conducted by WAG, Mt. Aspiring College and Yr 9–11 students in 2016 which highlighted the need to create positive and healthy opportunities enabling youth to stay connected and have the confidence to resist the need to turn to alcohol and other drugs.

The research showed that 28% of youth drank alcohol, of these 75% were regular drinkers and concerningly, 12% reported having unplanned sexual activity, 10% reported behaviour that would have involved authorities if known, and 18% reported they had been injured at least once while they had been drinking.

We all play a valuable role in empowering communities to make positive choices for healthy lifestyles.

For more details check out:

<https://www.facebook.com/WAGWanakaAlcoholGroup/>

<http://www.mtaspiring.school.nz/students-and-families/parenting-101>

SCULPTORS WANTED!

Ever dreamed of creating a sculpture for the Queenstown Gardens? Now's your chance.

The Lakes District Art and Culture Trust has called for expressions of interest from sculptors capable of producing a unique artwork to install in the Queenstown Gardens.

If you have a vision for the Gardens' next work of art, then get in touch!

Contact QLDC Arts and Events Facilitator **Jan Maxwell** for an information pack: jan.maxwell@qldc.govt.nz

Your submission needs to include: concept sketches, your CV and examples of previous works, a budget and fee proposal. Submissions close on 31 January 2018.

TO GET AN IDEA OF EXISTING SCULPTURES AROUND THE DISTRICT VISIT: WWW.ARTSTRUST.CO.NZ



VOLUNTEER APPRECIATION

Last month we received a certificate of appreciation from the New Zealand Fire Service. This accolade recognises our support of staff who also choose to share their skills as Fire and Emergency Volunteers. These people make a huge contribution to helping build a strong and safe community and we are proud to support them.

QLDC staff and Volunteer Fire Fighters Julien Facci (left) and Andre Freixo (right) pictured with Mayor Jim Boulton.



AERIAL MAGNETIC SURVEY

Starting mid-December, the Ministry for Business, Innovation and Employment (MBIE) is conducting an aeromagnetic survey across the South Island.

This involves a number of low-flying helicopters travelling up and down the district and will help MBIE understand the geology of the area, including mineral deposits, earthquake fault lines, soil types and water resources.

The survey is planned to run until April. For further information please check out www.nzpam.govt.nz or phone **Thomson Aviation** at **021 269 6870**.

LIBRARY HOLIDAY OPENING HOURS

	Queenstown	Wanaka	Arrowtown	Hawea	Kingston	Makarora	Glenorchy
23/12/17	10.00am-5.00pm	10.00am-5.00pm	10.30am-12.30pm	10.00am-2.00pm	10.00am-2.00pm	Closed	Closed
24/12/17	Closed	Closed	Closed	Closed	Closed	Closed	Closed
25/12/17	Closed	Closed	Closed	Closed	Closed	Closed	Closed
26/12/17	Closed	Closed	Closed	Closed	Closed	Closed	Closed
27/12/17	9.00am-5.30pm	9.00am-5.30pm	10.00am-5.00pm	10.00am-5.00pm	Closed	6.00pm-8.00pm	1.30pm-3.30pm
28/12/17	9.00am-5.30pm	9.00am-7.00pm	10.00am-5.00pm	Closed	Closed	Closed	Closed
29/12/17	9.00am-5.30pm	9.00am-5.30pm	10.00am-5.30pm	Closed	Closed	Closed	1.30pm-3.30pm
30/12/17	10.00am-5.00pm	10.00am-5.00pm	10.30am-12.30pm	10.00am-2.00pm	10.00am-2.00pm	Closed	Closed
31/12/17	Closed	Closed	Closed	Closed	Closed	Closed	Closed
1/1/18	Closed	Closed	Closed	Closed	Closed	Closed	Closed
2/1/18	Closed	Closed	Closed	Closed	Closed	Closed	Closed
3/1/18	9.00am-5.30pm	9.00am-5.30pm	10.00am-5.00pm	10.00am-5.00pm	Closed	10.00am-5.00pm	1.30pm-3.30pm
4/1/18	9.00am-5.30pm	9.00am-7.00pm	10.00am-5.00pm	Closed	Closed	Closed	Closed

SPORT AND RECREATION FACILITY OPENING HOURS

	Queenstown Events Centre*	Wanaka Recreation Centre	Wanaka Pool	Arrowtown Pool	Frankton Golf Centre	QEC Climbing Wall**
23/12/17	8.00am-8.00pm	10.00am-5.00pm	10.00am-6.00pm	11.00am-6.00pm	8.30am-7.00pm	8.00am-8.00pm
24/12/17	8.00am-5.00pm	10.00am-5.00pm	12.00pm-5.00pm	11.00am-5.00pm	8.30am-7.00pm	8.00am-5.00pm
25/12/17	Closed	Closed	Closed	Closed	Closed	Closed
26/12/17	8.00am-8.00pm	10.00am-5.00pm	12.00pm-6.00pm	11.00am-6.00pm	8.30am-7.00pm	8.00am-8.00pm
27/12/17	6.00am-9.00pm	10.00am-5.00pm	6.00am-8.00pm	11.00am-6.00pm	8.30am-7.00pm	6.00am-9.00pm
28/12/17	6.00am-9.00pm	10.00am-5.00pm	6.00am-8.00pm	11.00am-6.00pm	8.30am-7.00pm	6.00am-9.00pm
29/12/17	6.00am-9.00pm	10.00am-5.00pm	6.00am-8.00pm	11.00am-6.00pm	8.30am-7.00pm	6.00am-9.00pm
30/12/17	8.00am-8.00pm	10.00am-5.00pm	10.00am-6.00pm	11.00am-6.00pm	8.30am-7.00pm	8.00am-8.00pm
31/12/17	8.00am-5.00pm	10.00am-5.00pm	12.00pm-5.00pm	11.00am-5.00pm	8.30am-7.00pm	8.00am-5.00pm
1/1/18	Closed	Closed	Closed	Closed	8.30am-7.00pm	Closed
2/1/18	8.00am-8.00pm	10.00am-5.00pm	12.00pm-6.00pm	11.00am-6.00pm	8.30am-7.00pm	8.00am-8.00pm
3/1/18	6.00am-9.00pm	10.00am-5.00pm	6.00am-8.00pm	11.00am-6.00pm	8.30am-7.00pm	6.00am-9.00pm
4/1/18	6.00am-9.00pm	10.00am-5.00pm	6.00am-8.00pm	11.00am-6.00pm	8.30am-7.00pm	6.00am-9.00pm
5/1/18	6.00am-9.00pm	10.00am-5.00pm	6.00am-8.00pm	11.00am-6.00pm	8.30am-7.00pm	6.00am-9.00pm
6/1/18	6.00am-9.00pm	10.00am-5.00pm	10.00am-6.00pm	11.00am-6.00pm	8.30am-7.00pm	6.00am-9.00pm
7/1/18	6.00am-9.00pm	10.00am-5.00pm	12.00pm-6.00pm	11.00am-6.00pm	8.30am-7.00pm	6.00am-9.00pm

* Includes Alpine Aqualand, Alpine Health and Fitness, and Indoor Stadium
 ** Climbing wall instructor only available 2-5 January 2018 from 3.00pm-close

THERE ARE
NO BUSES
RUNNING ON
CHRISTMAS
DAY

HO HO HO-LIDAY SERVICES

While you're enjoying your Christmas break, QLDC staff will be busy maintaining essential services and providing recreation and leisure opportunities for you and your family.

Our town custodians will be out and about at the usual time, tidying up any mess left by revellers the night before. Our harbourmaster and coastguard volunteers work all summer long patrolling the lakes and rivers helping to keep you safe. Our parking wardens have the necessary task of keeping the traffic moving in town so you can find somewhere to park and do your shopping.

Our offices in Queenstown and Wanaka will be closed from 3.00pm on Friday 22 December and will reopen at 8.00am on Wednesday 3 January 2018. But our phone line will be available 24/7 so you can still call us about that noisy party down the road or a wandering dog and we'll respond as usual.

THE SCHOOL
HOLIDAY
PROGRAMME TAKES
A BREAK FROM
23 DECEMBER UNTIL
3 JANUARY 2018.

Does your usual rubbish day fall on Christmas Day? Easy! Put it out on Boxing Day.
 All other rubbish collection days remain the same.



QLDC CONTACT LIST AND HOURS

QLDC & SERVICE CENTRES

Queenstown Office:
 10 Gorge Road
 Private Bag 50072
 Queenstown
 Customer Services:
 Phone: 03 441 0499
 E-mail: services@qldc.govt.nz
 www.qldc.govt.nz

Wanaka Office:
 47 Ardmore Street
 Wanaka
 Phone: 03 443 0024
 Office Hours:
 Mon-Fri 8.00am-5.00pm

QUEENSTOWN EVENTS CENTRE

Arrowtown Athenaeum Hall
 Queenstown Memorial Hall
 Lake Hayes Pavilion
 Lake Wanaka Centre
 Alpine Aqualand
 Sports fields

Phone: 03 450 9005

WANAKA RECREATION CENTRE

Wanaka Pool
 Indoor Courts

Phone: 03 443 9334

TRANSFER STATIONS

Wakatipu: 110 Glenda Drive
 Frankton Industrial Area
 Phone: 03 4510106
Upper Clutha: Cnr of Ballantyne
 & Riverbank Roads
 Phone: 03 443 6063

HARBOURMASTER

Phone: 027 434 5289 and 027 414 2270
 Email: harbourmasterqt@smsl.co.nz

LIBRARIES

Arrowtown Buckingham Street Phone: 03 442 1607
 Hours: Monday-Friday 10.00am-5.00pm Saturday 10.30am-12.30pm
Glenorchy Islay Street Phone: 03 442 4378
 Hours: Wednesday 1.30pm-3.30pm Friday 1.30pm-3.30pm
Queenstown 10 Gorge Road Phone: 03 441 0600
 Hours: Mondays, Tuesdays, Wednesdays & Fridays 9.00am-5.30pm
 Thursdays 9.00am-7.00pm Saturdays 10.00am-5.00pm
Wanaka Bullock Creek Lane Phone: 03 443 0410
 Hours: Mondays, Tuesdays, Wednesdays & Fridays 9.00am-5.30pm
 Thursdays 9.00am-7.00pm Saturdays 10.00am-5.00pm
Hawea 14 Myra Street Phone: 03 443 9371
 Hours: Monday 10.00am-12noon
 Tuesday & Wednesday 10.00am-5.00pm
 Saturday 10.00am-2.00pm
Kingston Phone: Queenstown 03 441 0600
 Hours: Saturday 10.00am-2.00pm
Makarora Phone: 03 443 8342
 Hours: Tuesday 11.00am-1.00pm & Wednesday 6.00pm-8.00pm

EDITOR: REBECCA PITTS

TO ADVERTISE CONTACT:

Scuttlebutt is published bi-monthly by Queenstown Lakes District Council to inform ratepayers and residents of council activities.

✉ rebecca.pitts@qldc.govt.nz
 Feedback and ideas are welcome.

Sarah Douglas
 ✉ sarah.douglas@qldc.govt.nz