

Appendices

Appendix A
Davis Consulting Group Contaminated Land Experience



Davis Consulting Group Contaminated Land Experience

Glenn Davis is the director of Davis Consulting Group and has over 15 years post graduate experience working as an Environmental Scientist. Glenn has accumulated a significant volume of work experience in the contaminated land field undertaking preliminary site investigations (PSIs), detailed site investigations (DSIs) and remediation projects in New Zealand, Australia, Asia, the United Kingdom and Ireland. The following provides a summary of Glenn Davis's experience.

Davis Consulting Group (2007 – present): Principal Environmental Scientist – completed multiple preliminary and detailed site investigations in Otago and Southland predominantly for the land development industry. In addition to undertaking investigation and remedial work DCG advises the Southland Regional Council on contaminated land matters including the review of consultant reports and consent applications. Key projects DCG has undertaken include:

- Review of groundwater contamination associated with the former Invercargill gasworks site including the completion of a groundwater investigation and completion of an environmental risk assessment report to support a discharge consent application;
- Completion of site investigations on former landfills in Invercargill to consider the suitability of the sites for commercial/industrial development;
- Management of the removal of an underground fuel tank in Gore and subsequent groundwater investigation; and
- Completion of a number of detailed site investigations in the Te Anau area to consider the suitability of former farm land for residential development.

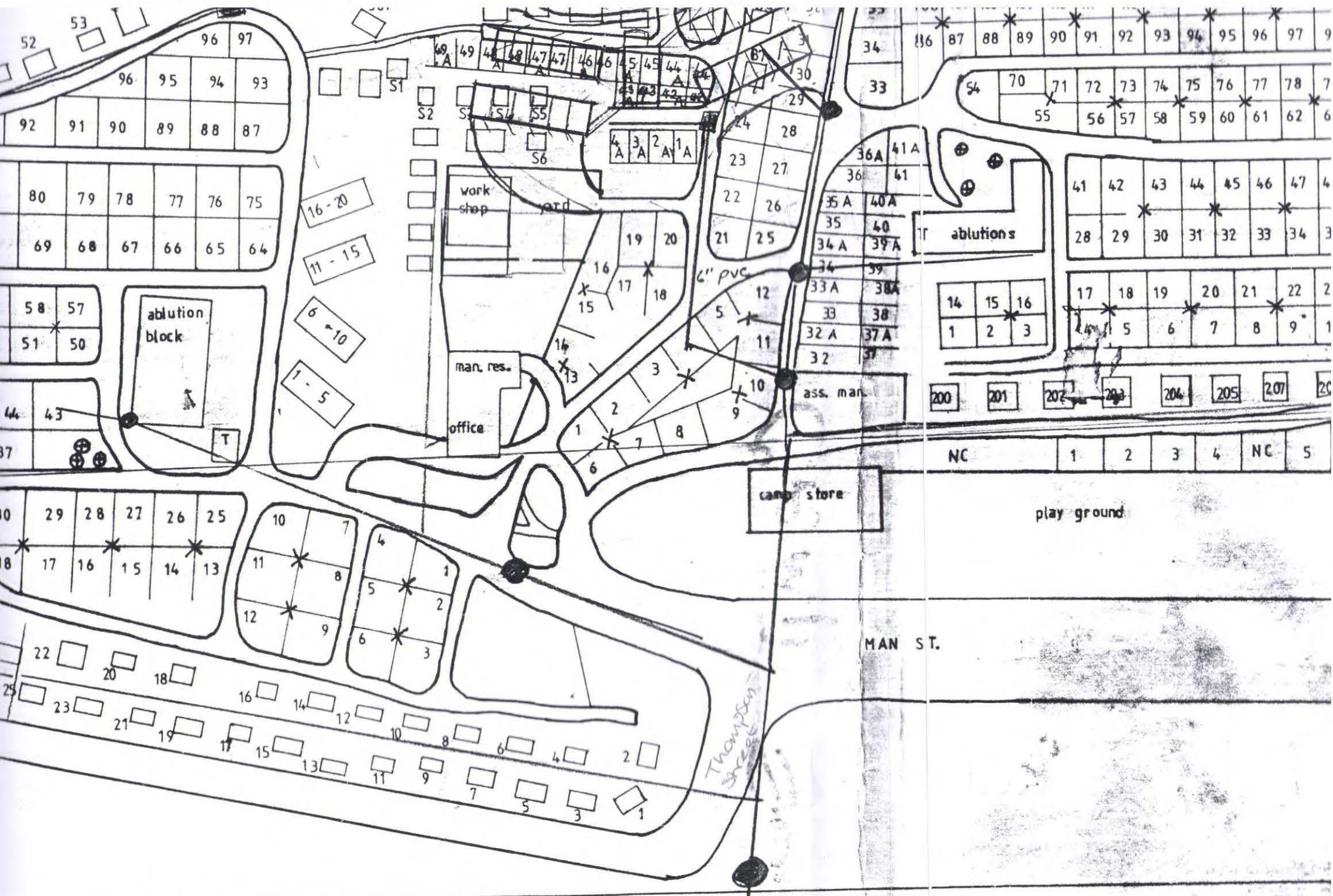
RPS Australia (2003 – 2006): Supervising Environmental Scientist managing multiple detailed site investigations in the land development industrial and operated as an environmental specialist for Chevron on Barrow Island monitoring and managing a number of large contaminated groundwater plumes.

URS Ireland (2001 – 2003): - Senior Environmental Scientist undertaking multiple PSIs and DSIs on services stations and train station throughout Ireland. Glenn was also involved in the design and operation of a number of large scale remediation projects, predominantly associated with the removal of hydrocarbon contaminated soil and recovery of hydrocarbons impacting groundwater.

ERM Australia (1998 – 2000) – Working as a project level environmental scientist Glenn completed in excess of 30 detailed site investigations and remedial projects on service stations, concrete batching plants, and transport depots.

Appendix B
Historical and Present Day Plans

[illegible]

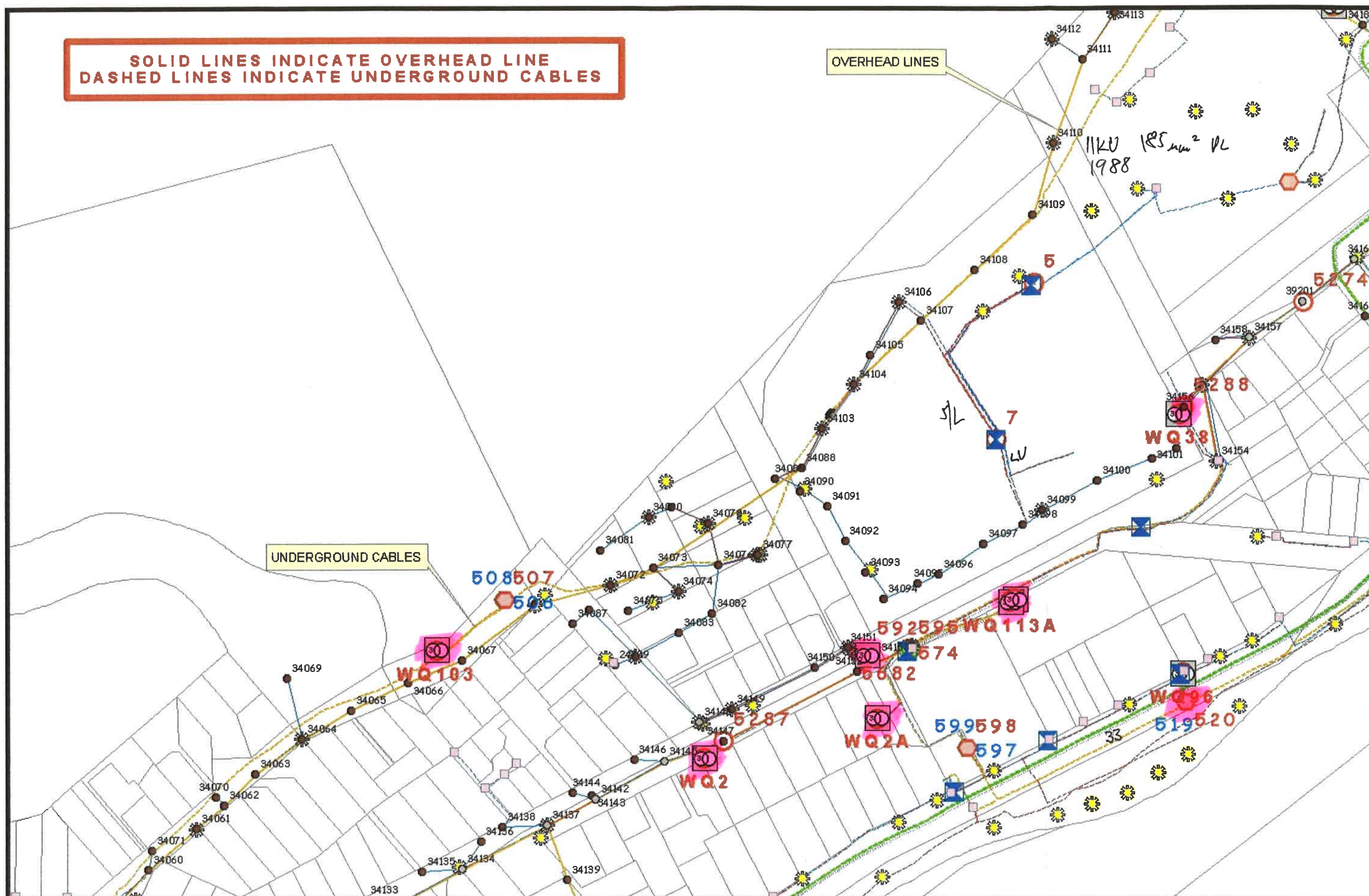


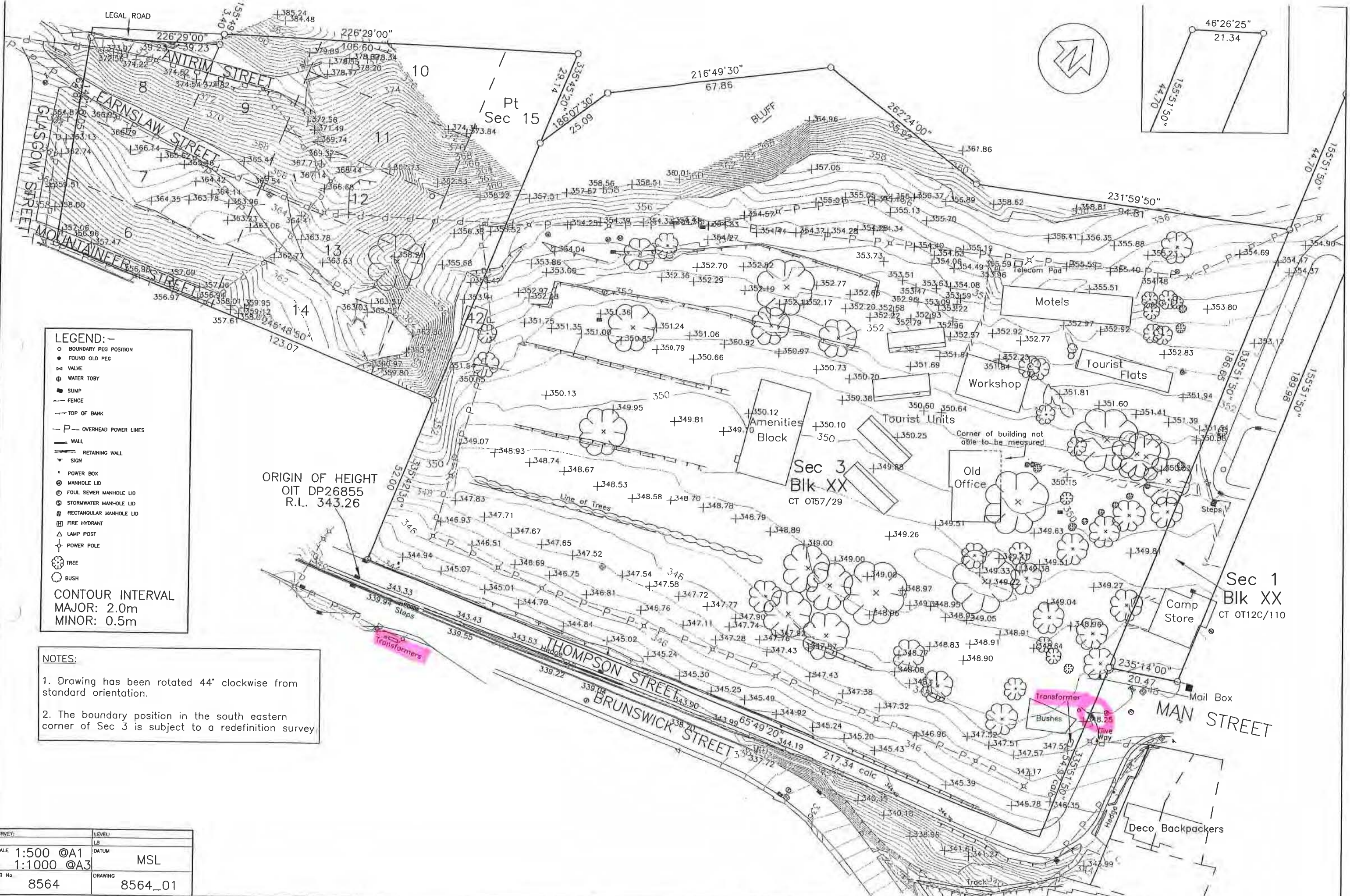
QUEENSTOWN MOTOR PARK

**SOLID LINES INDICATE OVERHEAD LINE
DASHED LINES INDICATE UNDERGROUND CABLES**

OVERHEAD LINES

UNDERGROUND CABLES





LEGEND:-

- BOUNDARY PEG POSITION
- FOUND OLD PEG
- ⊕ VALVE
- ⊗ WATER TORY
- SUMP
- FENCE
- TOP OF BANK
- P- OVERHEAD POWER LINES
- WALL
- RETAINING WALL
- ▽ SIGN
- ⊙ POWER BOX
- ⊙ MANHOLE LID
- ⊙ FOUL SEWER MANHOLE LID
- ⊙ STORMWATER MANHOLE LID
- ⊙ RECTANGULAR MANHOLE LID
- ⊙ FIRE HYDRANT
- △ LAMP POST
- POWER POLE
- ⊙ TREE
- ⊙ BUSH

CONTOUR INTERVAL
MAJOR: 2.0m
MINOR: 0.5m

NOTES:

1. Drawing has been rotated 44° clockwise from standard orientation.

2. The boundary position in the south eastern corner of Sec 3 is subject to a redefinition survey

SURVEY:	LEVEL:
FB	LB
SCALE: 1:500 @A1	DATUM
1:1000 @A3	MSL
JOB No	DRAWING
8564	8564_01

CLARK FORTUNE
McDONALD & ASSOCIATES
REGISTERED LAND SURVEYORS LAND DEVELOPMENT & RESOURCE MANAGEMENT CONSULTANTS
359 Lower Shalover Road, P.O. Box 553 Queenstown
Tel: (03)442-0880, Fax: (03)442-1088, Email: c.f.s@clarkfortune.co.nz

ISSUE	COMMENTS	BY	DATE
1	Queenstown Lakes District Council	AJM	24/04/2003

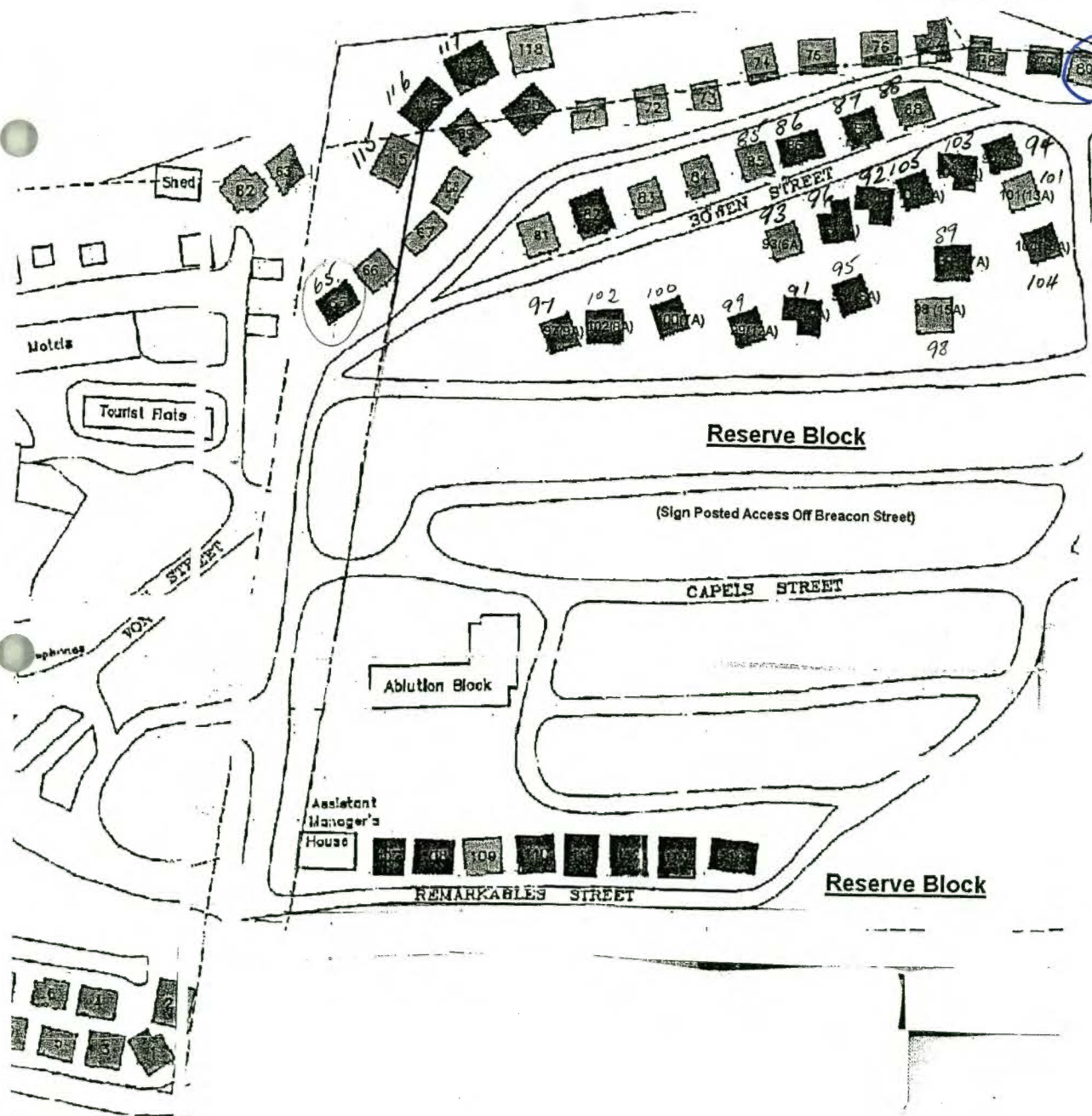
**TOPOGRAPHICAL SURVEY OF
QUEENSTOWN LAKEVIEW
HOLIDAY PARK**

PROJECT:
Camp Ground

PRINCIPAL:
QLDC

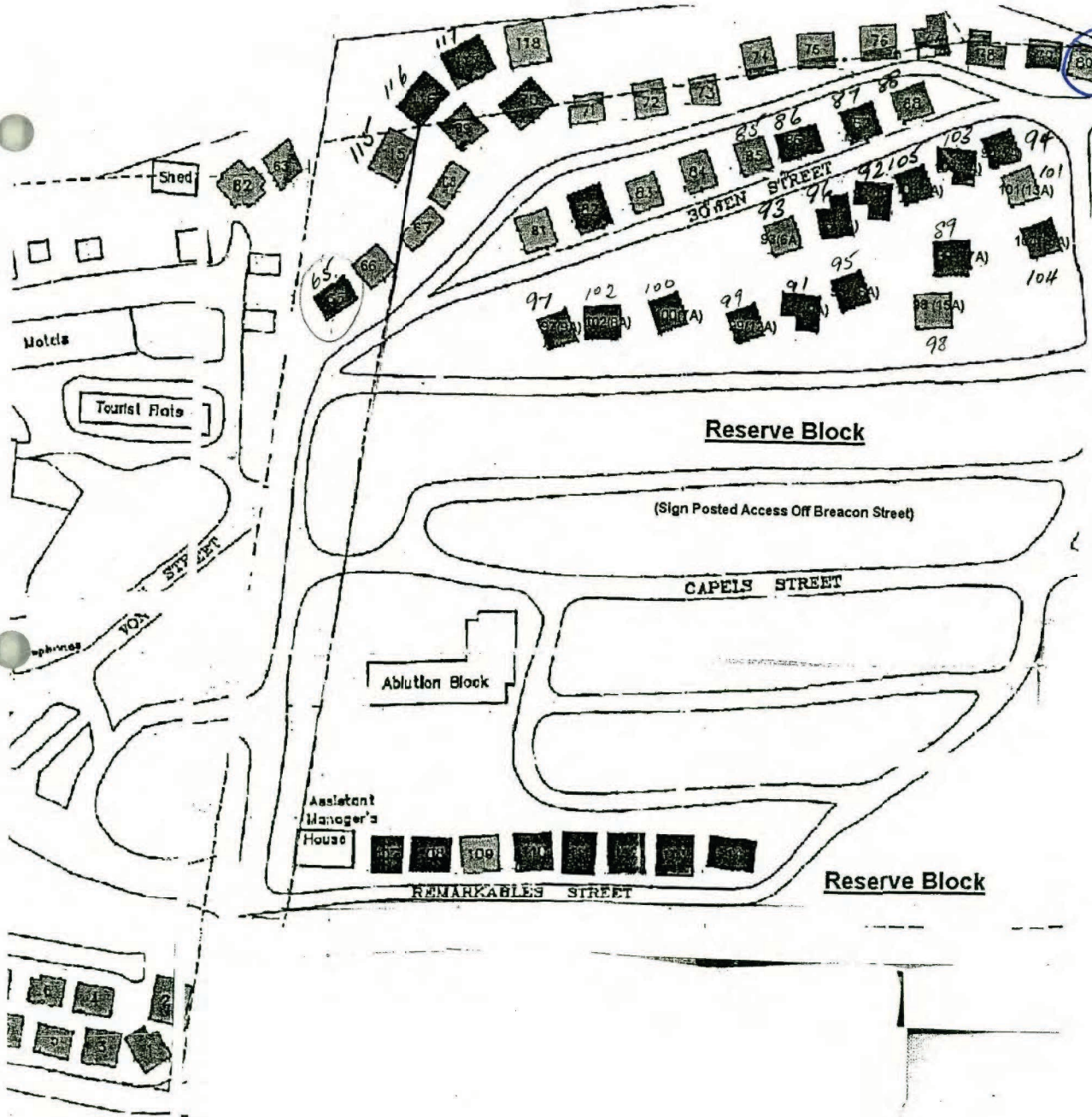
APPROVED:	ADPW 24/04/03	DESIGN:
CHECKED:	PD 24/04/03	DRAWN: AJM April 2003
REVISION	COMMENTS	BY

Yellow



CABIN 80

Yellow



CABIN 80

Yellow

