

## QLDC ESRI ARCGIS ONLINE MAPS

Discover your district online! ESRI's ArcGIS Online hosts QLDC maps that allow you to browse district wide aerial photography, land parcel information and major points of interest such as walk and mountain bike trails. All you need is a Smartphone or Tablet. *Get the free\*App now!*

\*Does not include network data costs.

### Get the App!

Go online and search for the “*ESRI ArcGIS*” app

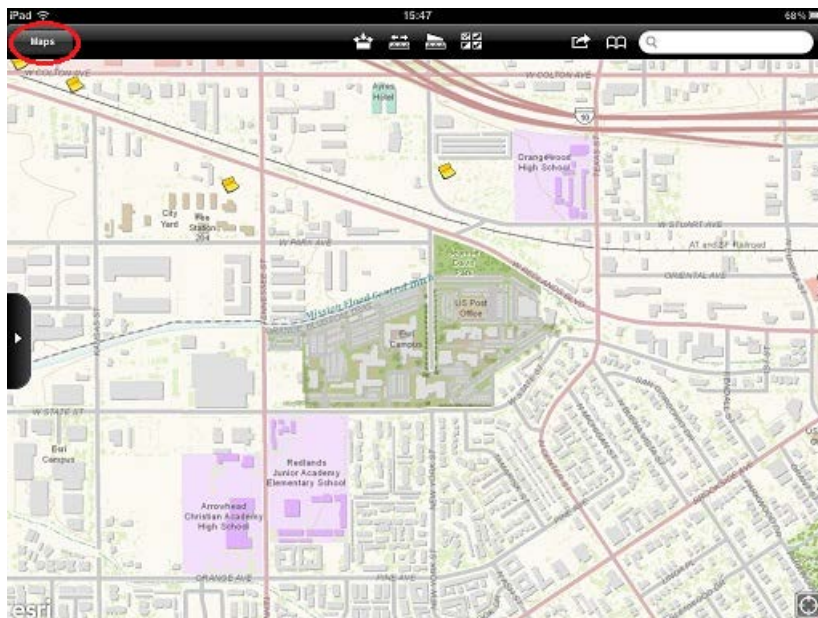


### Finding and using the QLDC maps

Tap the ESRI ARCGIS app  in your Smartphone or Tablet to get started.

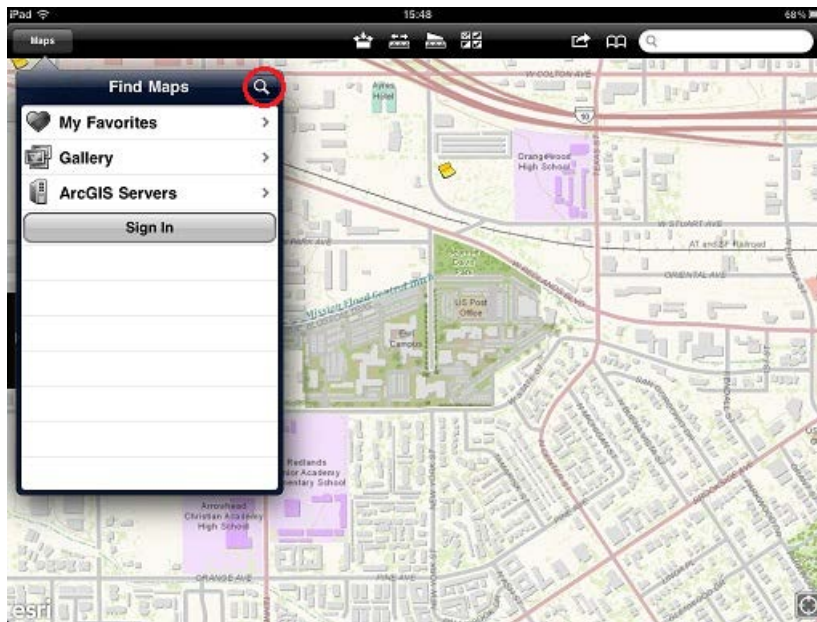
*Note: the “look and feel” of this app will change depending on your device, but functionality and tools remain the same. Screenshots below are from iPad tablet.*

To access the QLDC maps, tap the “Maps” button.

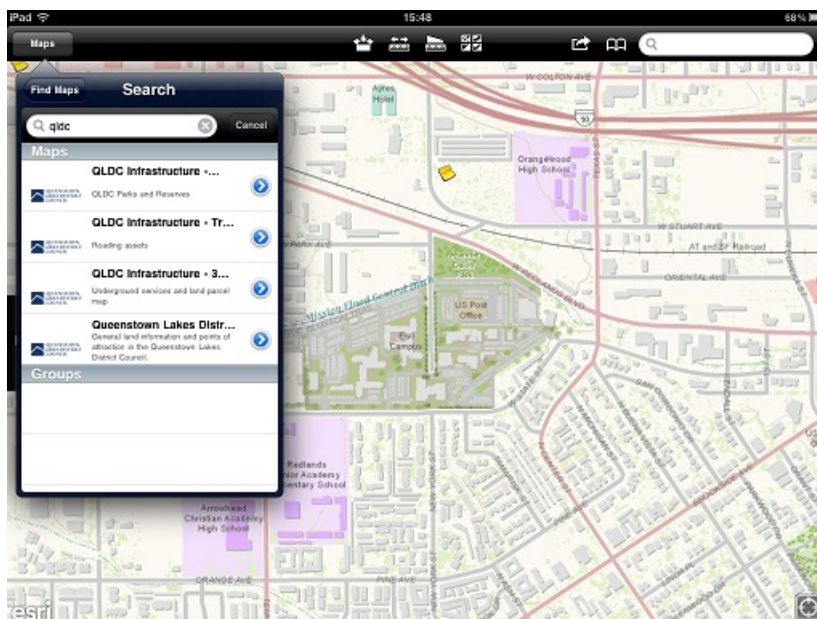


On the “Find Maps” menu, tap the magnifying glass icon to search for QLDC maps

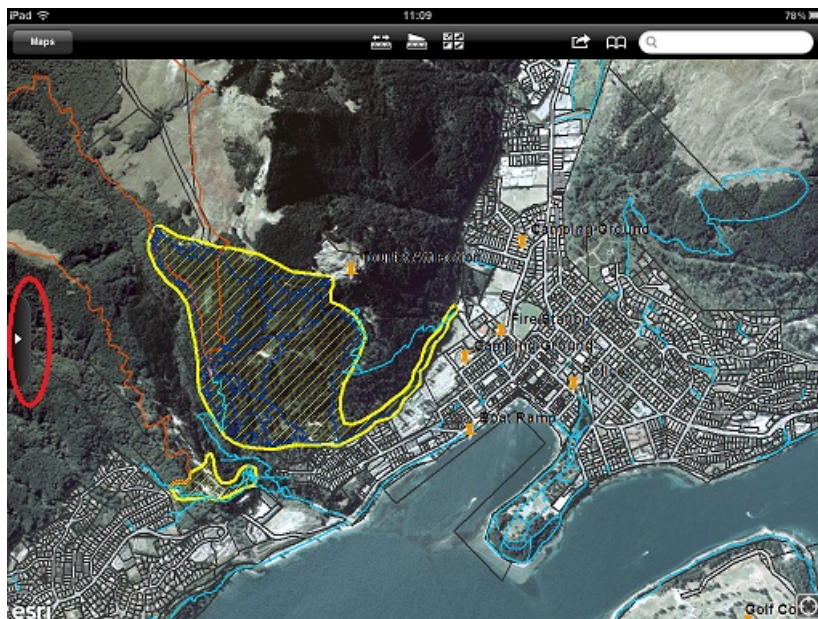
*Tip 1: You don't need to “Sign In” to browse and use the QLDC maps.*



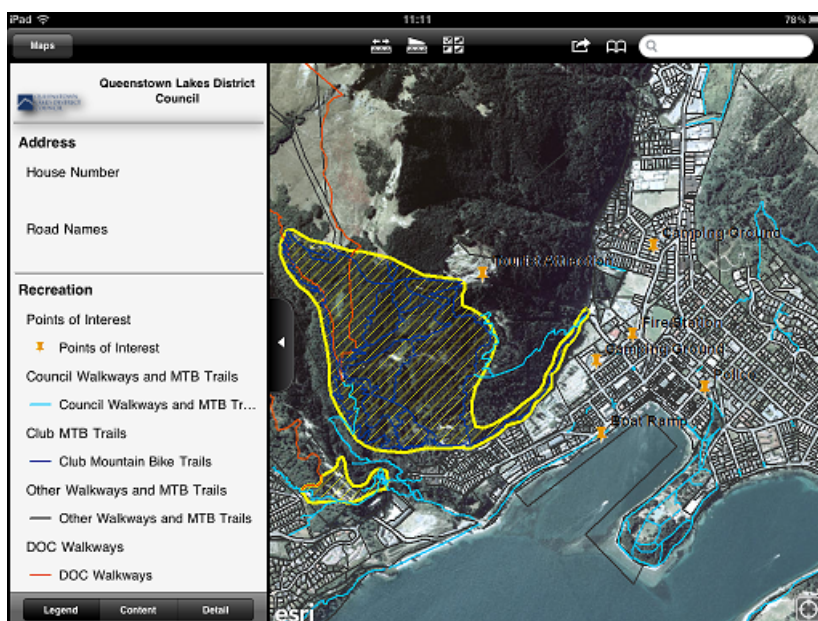
Type and search for “QLDC”. A list will show you all maps related to QLDC. Tap the “Queenstown Lakes District Council” map to open it.



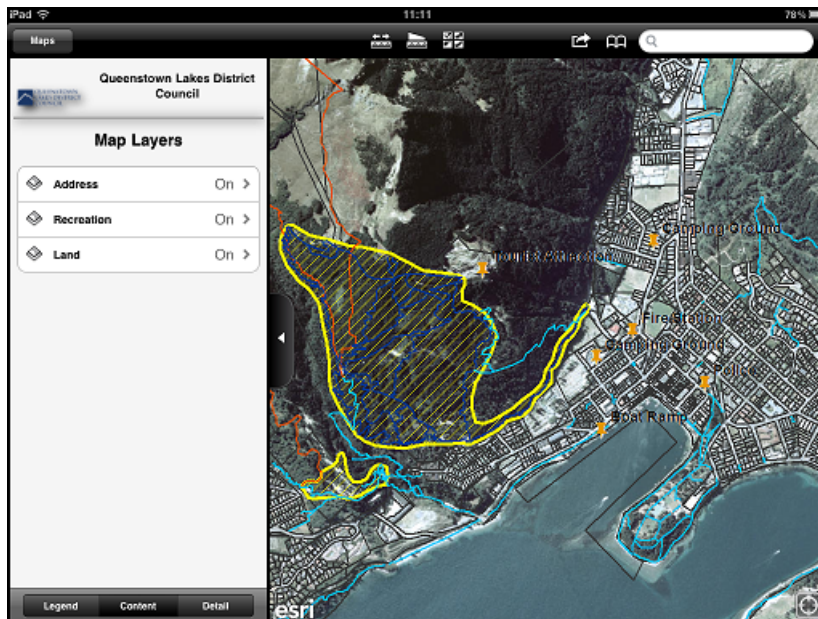
To explore details about this map, click on the tab located on the left hand side of the screen (circled in red below)



Here you can access the “Legend” for the different layers in the map, “Content” for controlling the visibility of your layers and “Detail”, which includes map authoring information.

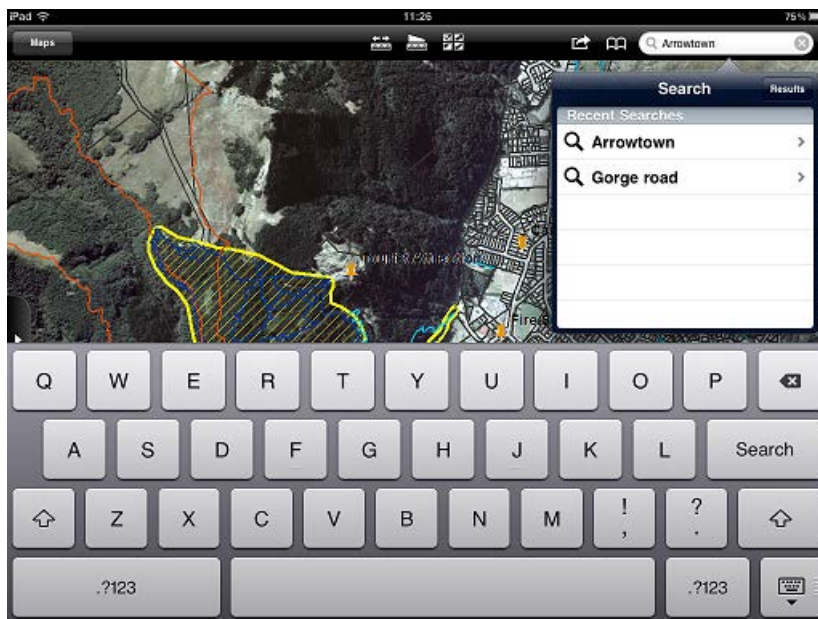






Use the search bar for finding localities and roads.

*Tip 2: The search bar uses a global search engine, so be specific when searching for local road names, i.e. "Gorge Road Queenstown"*



When location services are switched on in your device, you can use the GPS to locate your position in the map. If you want to use the GPS, tap the bottom right icon on your screen (circled in red below).



Tapping on the screen will bring up information about the area, such as parcel details and walking trails.

*Tip 3: Flick through the pop up window to see information about different map layers.*







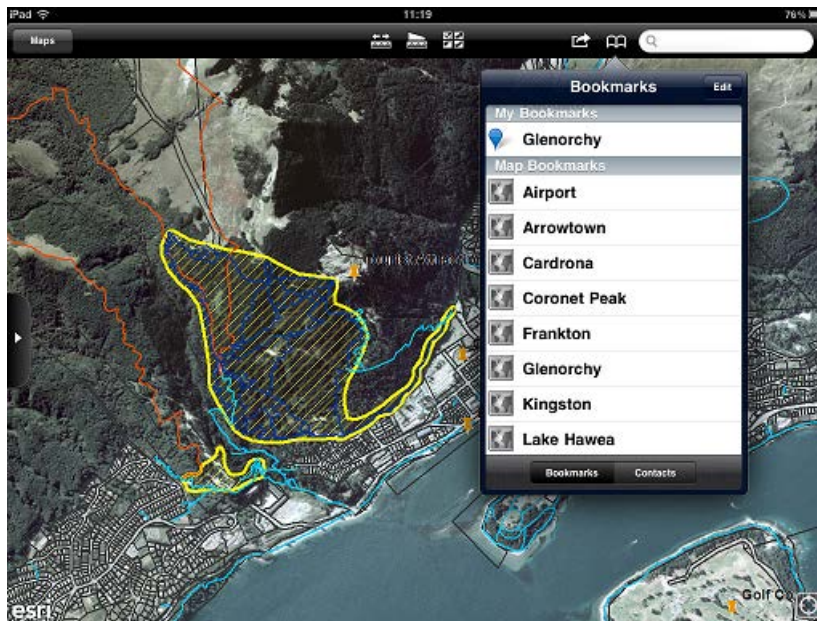
**Tapping the GPS location will bring up location information, including closest address and geographic coordinates.**

***Tip 4: You can save this location by tapping on the bookmark icon.***

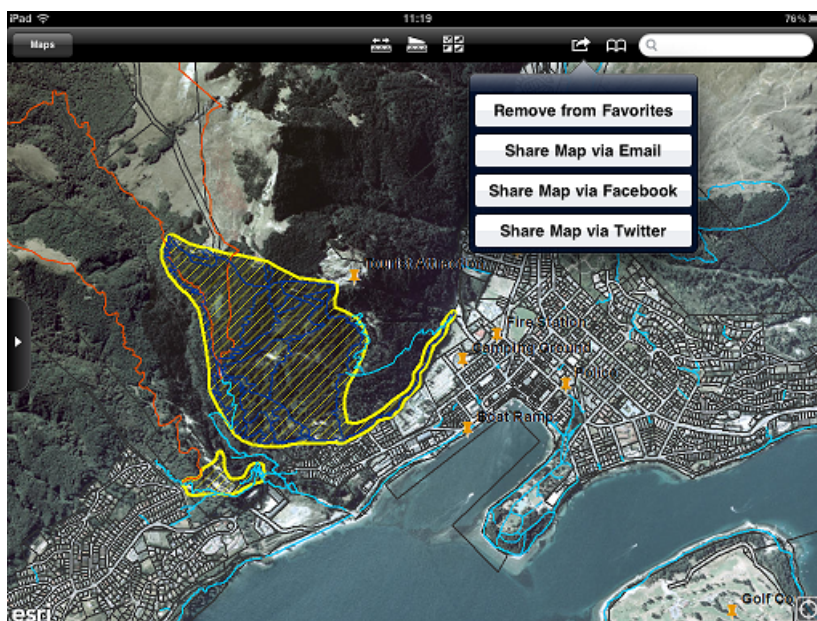




Bookmarks can be accessed and edited by tapping the bookmark icon.



You can also add, control and share your favourite maps by using the Options icon.



Other useful tools include:



Measuring Distance

*Use the GPS or tap on the map to add points for calculating linear distance in metres, feet, kilometres, miles, nautical miles or yards.*



## Measure Area

*Add multiple points to draw and calculate an area in square metres, square kilometres, acres or hectares.*



## Basemaps

*Choose from a range of freely available online basemaps, such as world terrain, world imagery, OpenStreetMap, Bing Maps and National Geographic.*